



SSU

**STAFF
SPORTS
UNIFORM
CATALOGUE**

CONTENTS

- » Company Background
- » Experience
- » Your Kit – Your Way
- » **NEW!** Fast Track Range
- » **NEW!** Impact Range
- » Blade Range
- » Dual Range
- » Camo Range
- » Fuse Range
- » Webshop
- » Size Guide



*Stuart
Surridge*

In 1867 Percy Stuart Surridge created a sports brand. He applied the principles of tradition and craft, with the concept of bringing innovation to improve performance, creating product defined by craftsmanship, originality and Britishness.

Today, we are a brand that not only connects with our markets and consumers but keeps with our origins and principle's set over 150 years ago.

Surridge Sport head office, warehousing and production facilities are based in Burnley, Lancashire. The site has in house embroidery, manufacturing, print and embellishment facilities along with a dedicated design and product development team and a fully equipped distribution/customer service team. This allows Surridge the flexibility to manage and service its portfolio of accounts simply and efficiently, maintaining day to day fulfilment of orders as well as looking to make improvements and handle any quick turnaround of kit that may be required. Careful planning with account management shall ensure the organisation's needs will be prepared for in advance and progressed in an organised and agreed fashion.

The company is wholly family owned in the UK and is self-financed operating from our own custom built facilities in Lancashire of 60,000 sq ft. We will be happy to produce copies of our audited accounts to satisfy any due diligence procedures and we formally extend an open invite to any of your personnel to visit us at any time.

Surridge Sport uses factories in the Far-East for production of the proposed range. We have developed strong relationships with the suppliers and have worked with them for many years. We also have employees based in the factories to help manage the supply.

OBJECTIVE

Surridge Sport aim to supply you with a commercially attractive proposal and a high performance playing and training range at competitive prices. We also guarantee a high level of contract management, quality of product and a seamless transition of supply.

EXPERIENCE

After a rigorous process involving a variety of sports brands Cheltenham College decided to stay with Surridge for our sports kit provision. We have a long-standing and good relationship with the company and one that is not based purely on kit provision. Surridge have become part of College and understand our needs and demands of the school. The quality of kit provided for all pupils is modern, a competitive price and of an excellent quality that addresses the demands of sport in these modern times. Customer service is good, both parties understand the need to work collaboratively for the pupil's best interests and to ensure they are getting the best possible experience in the ordering and delivery of their garments.



Tim Watts – Director of Sport



Wilmslow High School

Sir Thomas Boteler School

Halliford School

Salesian College



BESPOKE PLAYING KIT

Over 1000 designs to choose from – for more information visit the [surridge kitbuilder online](#)



YOUR KIT – YOUR WAY

Bespoke playing kit available across 60 sports including Football, Athletics, Netball, Basketball & American Football

Create your own

BESPOKE SPORTS KIT

With **60 SPORTS** to choose from, including:

- » CRICKET
- » FOOTBALL
- » RUGBY
- » HOCKEY
- » NETBALL
- » ATHLETICS
- » BASKETBALL
- » ROWING

with Surridge Sport, you can design

Your Kit, Your Colours, Your Way



For more details scan the QR code opposite or visit www.surridgesport.com/kitbuilder
Compliment your design with our stock range of shorts and socks.



AVAILABLE IN A RANGE OF COLOUR OPTIONS

Choose from our range of **60 SPORTS!**

Create your own

BESPOKE TRAINING KIT

Compliment your sports kits with our range of bespoke training wear

- » HOODIES
- » TEK PANTS
- » SKORTS
- » QUARTER ZIPS
- » LEGGINGS
- » T-SHIRTS
- » SHORTS

Surridge Sport
YOUR KIT - YOUR WAY



AVAILABLE IN A RANGE OF COLOUR OPTIONS



For more details scan the QR code opposite or visit www.surridgesport.com/kitbuilder
Compliment your design with our stock range of shorts and socks.

Surridge Sport
YOUR KIT - YOUR WAY

EST. 1867

Surridge Sport
YOUR KIT - YOUR WAY



SS
EST. 1867



SURRIDGE SPORT ▶ EST. 1867



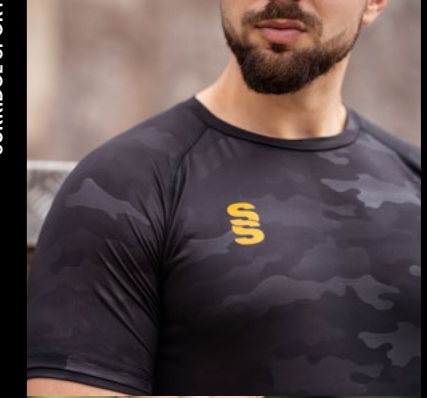
SURRIDGE SPORT ▶ EST. 1867



SURRIDGE SPORT ▶ EST. 1867



SURRIDGE SPORT



SURRIDGE SPORT

▶ EST. 1867

SURRIDGE SPORT

▶ EST. 1867

SURRIDGE SPORT

SURRIDGE

FASTTRACK RANGE

3 WEEK DELIVERY

7 BESPOKE GAMES SHIRT DESIGNS CREATED FOR FAST DELIVERY

OUTFIELD



SURRIDGE SPORT

EST. 1867

FAST TRACK DESIGN RANGE

The Range has been created with you in mind, INCLUDING the option too add your:

- » LOGO
- » SCHOOL CREST
- » NAME
- » NUMBER
- » SPONSOR

As many or as few as you'd prefer in a limitless range of colours.

MAKE YOUR KIT STAND OUT!

The above designs are available as **Short Sleeve Outfield** and **Long Sleeve Goalkeeper** in a selection of colour options.

SURRIDGE STOCK RANGE

Complete your bespoke football kit by adding Surridge Sports stock range of shorts and socks. See examples below:



Surridge Match Short SURF005

Classic Short SURF026



Surridge Match Sock SURF006

Surridge Single Band Sock SURF027

For the full range of sock colours, see back of catalogue.

ALSO AVAILABLE:
Surridge Womens Match Short
SUB-C-SHORTS-W005

Please note:
These are **NOT** part of the Surridge Stock Range



DISCLAIMER

*Please note: Set SURRIDGE colours between shirts, shorts and socks may differ slightly due to variations in dying and printing methods. Although every effort is made to match colours, exact colour matches cannot be guaranteed.

TO GET STARTED

Scan the QR code or visit www.surridgesport.com where you will find our full guide to the Fast Track range.



EST. 1867

SURRIDGE SPORT

SURRIDGE SPORT



SURRIDGE SPORT

EST. 1867



SURRIDGE SPORT



EST. 1867

SURRIDGE SPORT

EST. 1867

SURRIDGE SPORT

3 WEEK DELIVERY
Fast Track Range



Available
in Male and
Female Fits

IMPACT RANGE

VERSATILE, LONG-LASTING
PERFORMANCE WEAR



EST. 1867



SURRIDGE SPORT EST. 1867



SURRIDGE SPORT EST. 1867



SURRIDGE SPORT EST. 1867



SURRIDGE SPORT



EST. 1867

SURRIDGE SPORT

SURRIDGE SPORT EST. 1867

SURRIDGE

Available in
Mens and Ladies Fits

Red



Reverse

17 Trim Colour Options



Item also available **UNBRANDED** with or without SS branding

NEW! Impact T-Shirt

DU382

- » 86% Polyester, 14% Spandex
- » Lightweight, performance enhancing fabric for premium comfort while training
- » Embossed design detail for increased durability and longevity
- » Specially designed construction to allow for optimum movement
- » Mesh under arm panels provide fast drying and ultimate cooling
- » Create your own look with unlimited print design options
- » Fabric weight: 180gsm

Unisex Sizes

SJ S M L XL XXL XXXL

Ladies Sizes

XS S M L

NEW!

Dual Stripe design also available



Black

Royal

Navy

Available in
Mens and Ladies Fits

Black



17 Trim Colour Options



Item also available **UNBRANDED** with or without SS branding

NEW! Impact 1/4 Zip Performance Top

DU383

- » 95% Polyester, 5% Spandex
- » Lightweight and breathable whilst providing warmth and comfort
- » Embossed design detail for increased durability and longevity
- » Fast wicking and quick drying fabric offering premium moisture management to keep you warmer for longer
- » Specially designed construction to allow for optimum movement
- » Extendable thumbholes for extra comfort and warmth
- » Adjustable draw cords in the hem for a perfect fit
- » Create your own look with unlimited print design options
- » Fabric weight: 220gsm

Unisex Sizes

SJ S M L XL XXL XXXL

Ladies Sizes

XS S M L

NEW!

Dual Stripe design also available



Royal

Navy

Red

BLADE

TRAINING RANGE

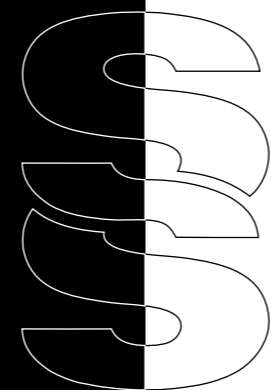
A unique stock training range available in 12 different colourways



SURRIDGE SPORT

EST. 1867

CRAFTED BY SURRIDGE
EST. 1867



Contrast Back Yoke with SS

Blade Training T-Shirt SUR365

- » Regular fit, performance polyester pique, crossover V-Neck
- » Forward position side seams with contrast insert
- » Contrast back yoke with embroidered SS logo
- » French seam shoulder construction for comfort and durability
- » Forward side seams with contrasting coloured insert.
- » Embroidered Surridge logo to chest
- » Fabric weight: 150gsm

Unisex Sizes

SJ MJ LJ YTH
S M L XL XXL XXXL

Colours

Shirt/Sleeve/Side Seam



BLADE
TRAINING RANGE



Blade Polo Shirt

SUR366

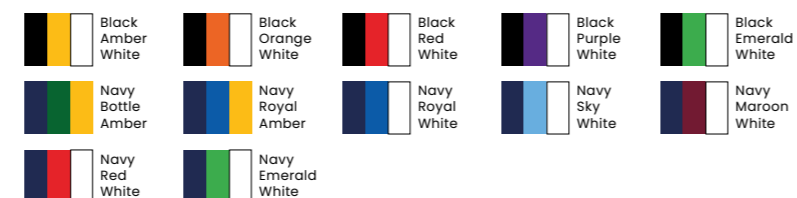
- » Performance Polyester pique
- » 3 button placket with 1x1 polyester rib collar
- » Forward position side seams with contrast insert
- » Contrast back yoke with embroidered SS logo
- » French seam shoulder construction for comfort and durability
- » Forward side seams with contrasting coloured insert
- » Embroidered Surridge logo to chest
- » Fabric weight: 150gsm

Unisex Sizes

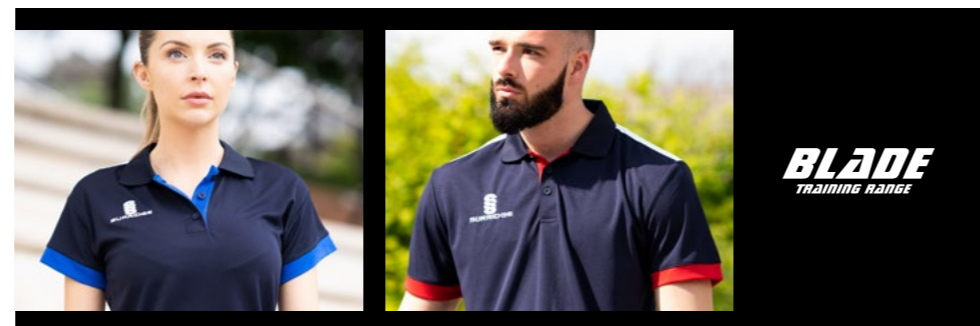
SJ MJ LJ YTH
S M L XL XXL

Colours

Shirt/Sleeve/Side Seam



Contrast Back Yoke with SS



Blade Hoody

SUR367

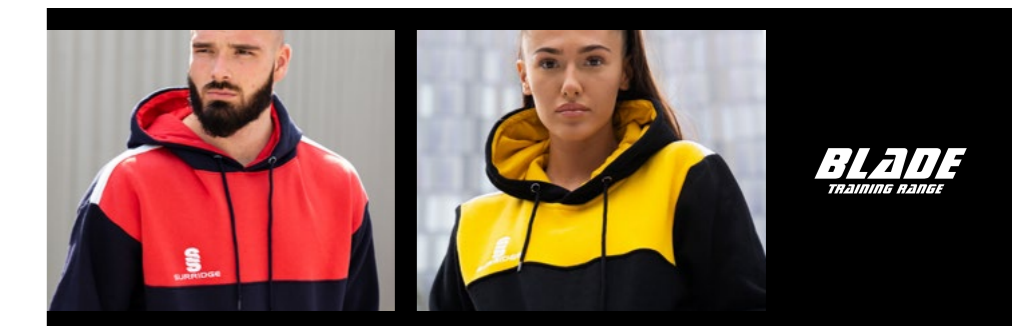
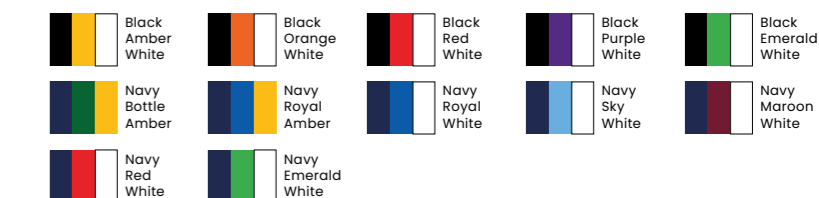
- » Polyester and Cotton fabric blend
- » Contrasting inner hood lining and chest panel
- » French seam shoulder construction for comfort and durability
- » Branded eyelets with tube draw cord
- » Large front hoodie pocket
- » Forward side seams with contrasting insert
- » Embroidered Surridge logo to chest
- » Fabric weight: 300gsm

Unisex Sizes

SJ MJ LJ YTH
S M L XL XXL

Colours

Hoody/Chest/Side Seam





Blade Performance Top SUR368

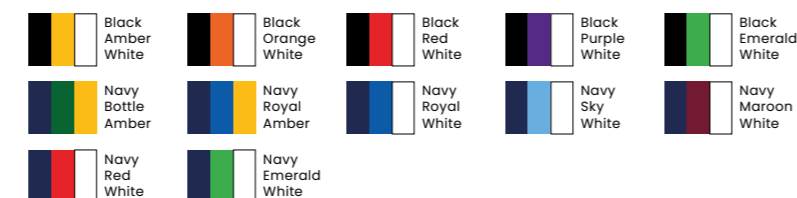
- » Performance Polyester French Terry material
- » Contrast chest panel and contrast back panel
- » Half Zip with SS performance locking rubber zip toggle
- » French seam shoulder construction for comfort and durability
- » Forward side seams with contrasting colour insert
- » Embroidered Surridge logo to chest
- » Fabric Weight: 250gsm

Unisex Sizes

SJ MJ LJ YTH
S M L XL XXL

Colours

Top/Chest/Side Seam



Contrast Back Yoke with SS

Poplin Pant SUR381

Available in Mens and Ladies Fits

- » Soft microfibre poplin outer
- » Straight leg traditional kit
- » Extra large ¾ side leg zip coming up to just below the pocket
- » Embroidered Surridge logo to left thigh
- » Soft cotton inner lining
- » Lycra gusset for flexibility
- » 2 zipped pockets

Unisex Sizes

SJ MJ LJ YTH
S M L XL XXL XXXL

Ladies Sizes

8 10 12 14 16 18

Black



Navy



Blade Slim Tek Pants SUR378

- » French Terry material with polyester lycra insert at calf
- » Two invisible zip pockets for security
- » Embroidered Surridge logo to thigh

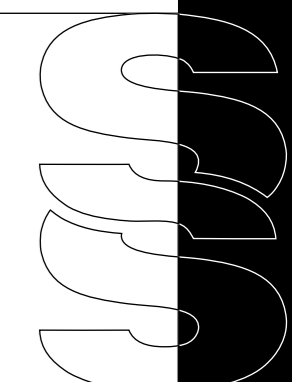
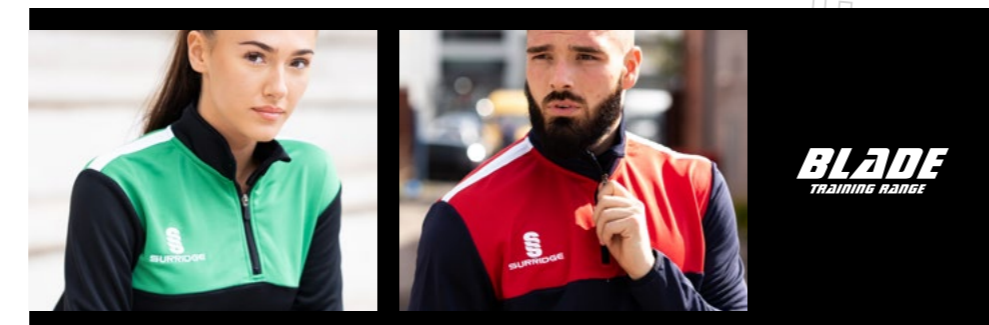
Unisex Sizes

SJ MJ LJ YTH
S M L XL XXL

Black



Navy



SURRIDGE

Ripstop Track Pant

SUR375

- » Matte texture Ripstop-Polyester blend with mesh upper lining and Nylon Tafeta lower lining
- » Lycra gusset for flexibility and comfort with a drawcord
- » More modern slimmer leg fit from knee downwards
- » 12" side seam lower zip at hem

Available in
Mens and Ladies Fits

Unisex Sizes

SJ MJ LJ YTH M L XL XXL

Ladies Sizes

8 10 12 14 16 18

Black



Navy



Performance Legging

DU028

- » 85% Polyester - 15% Elastane
- » 2 Side pockets for mobile and two smaller pockets (one with zip) for personal belongings
- » Printed SurrIDGE logo to thigh
- » Available with and without SS logo
- » Dual print can be added for extra colour to calf

Ladies Sizes

7-8 9-10 11-12

8 10 12 14 16 18

Navy



Black

17 SS Colour Options



Item also available **UNBRANDED** with or without SS branding

Pocket Training Ripstop Shorts

SUR331

- » Polyester Ripstop wind resistant fabric with 2 pockets
- » Embroidered SurrIDGE logo to thigh
- » Fabric Weight: 115gsm

Available in
Mens and Ladies Fits

Unisex Sizes

SJ MJ LJ YTH S M L XL XXL

Ladies Sizes

8 10 12 14 16 18



Navy

Black

Blade Training Shorts

SUR370

- » 100% Polyester
- » 2 Pockets
- » Embroidered SurrIDGE logo to thigh
- » Fabric Weight: 160gsm

Unisex Sizes

SJ MJ LJ YTH

S M L XL XXL



Black

Navy

Blade Skort

SUR380

- » 100% Performance Pique Skort, made with high quality polyester with an elastane inner lining
- » Embroidered SurrIDGE SS logo to the left hem

Ladies Sizes

4 6 8 10 12 14 16 18

Bespoke Badge Option:
Add your School Crest in full colour. Sponsor logos can also be added to the back left and right of the skort.



Red



Navy

Black

Royal

Baseball Cap

SUR421

- » Classic fitted cap with comfortable five panel design
- » Eyelet mesh back panels for improved air flow & ventilation
- » Interior woven tape reinforcement for strength & durability
- » Adjustable tab at the back with hook & loop closure for custom fitting
- » Embroidered SS logo in white to left side of cap

Size
One Size



Red

Colours
Classic Baseball Cap



Bottle Maroon Navy Royal Emerald Black

NEW Fuse Flexi Cap

SUR470



- » Modern shaped cap, lighter, sleeker, smarter and more comfortable
- » Its 6 panels are well finished, combining a lightweight visor fabrication and new three-layer multifunction sweatband
- » Inner sweatband and elastic fitting gives the most comfortable fit there is

Unisex Sizes
S/M L/XL



Bottle

Colours
Fuse Flexi Cap



Navy Maroon Black

Womens Dual Cycle Shorts

DU041

- » The Performance cycle shorts are made of fantastic comfortable 85% Polyester and 15% Elastane material
- » There is no grinning on the material when stretched
- » They feature two side pockets for mobile phones
- » Printed Surridge SS logo is situated on the left thigh

Ladies Sizes

7-8 9-10 11-12
6 8 10 12 14 16 18



Navy

Black

17 SS Colour Options



Item also available UNBRANDED with or without SS branding

Dual Hijab

DU030

- » Lightweight performance polyester material
- » Highly breathable and very cool to wear
- » SS print on right hand side

Bespoke Badge Option:
Add your School Crest in full colour

Ladies Sizes
XS/S M/L



Navy

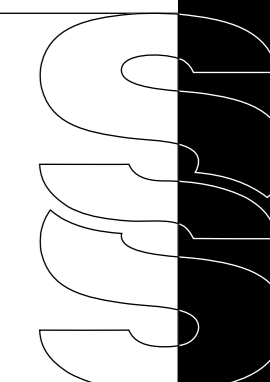


Black

17 SS Colour Options



Item also available UNBRANDED with or without SS branding



Your School Crest Here

Dual Backpack

DU004

- » Over shoulder quality backpack made of polyester material with our Surridge SS logo

Bespoke Badge Option:

Add your School Crest in full colour

Size

55cm x 38cm



17 Dual Colour Options



Item also available **UNBRANDED** with or without SS branding

Small Holdall

SUR364

- » Stylish Holdall with plenty of space and includes wet compartment
- » 100% modern nylon with 2 end pockets

Size

64cm x 27cm x 30cm



NEW! Mouth Guard

SUR503

- » Eva Material Mouth guard in a Poly Propylene box

Unisex Sizes

Junior Adult



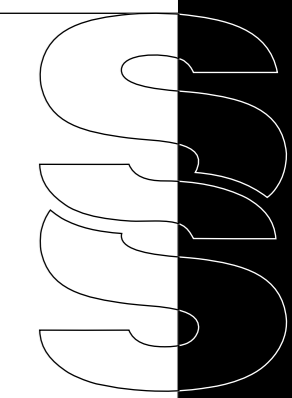
NEW! Shin Guards

SUR502

- » Plastic moulded shin guards with soft foam protection for comfort

Unisex Sizes

S M L



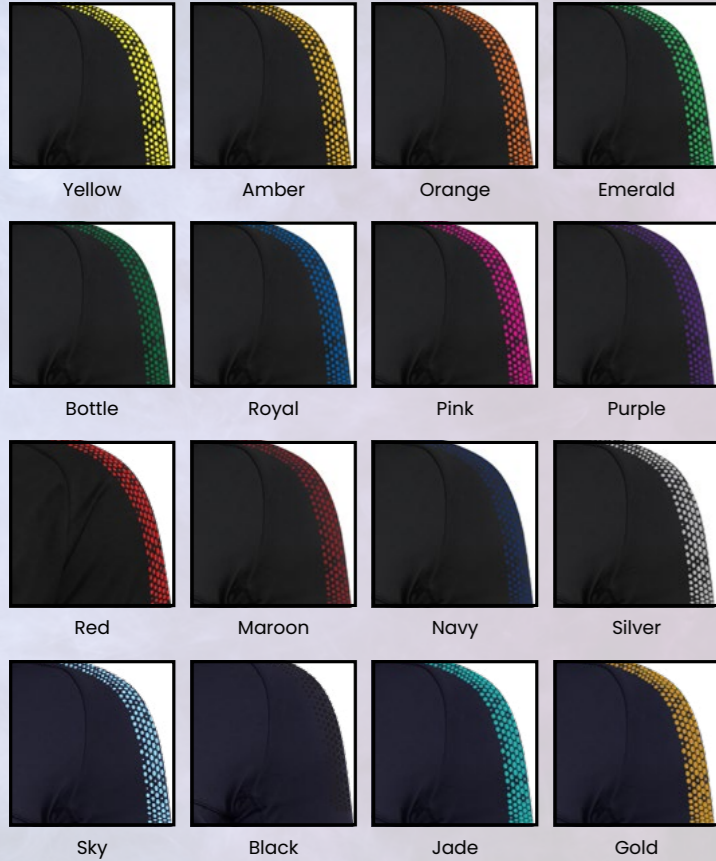
SURRIDGE

DUAL TRAINING RANGE

YOUR COLOURS YOUR WAY

Our entire Dual Range is available in 17 SS colours or choose Unbranded - without SS branding

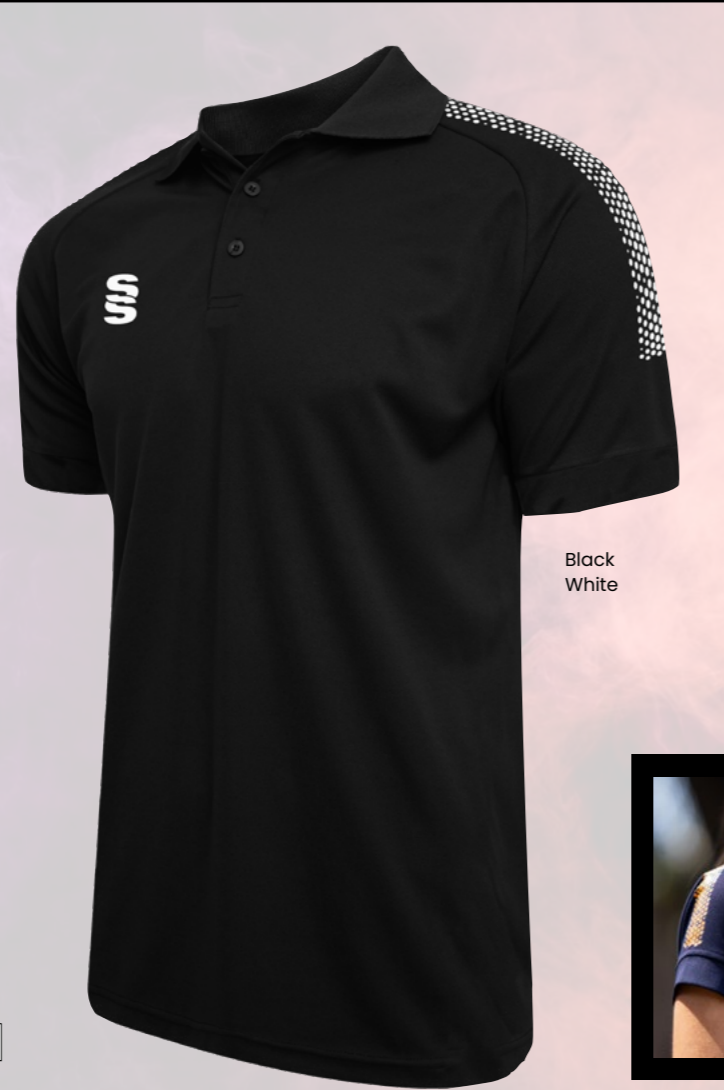
DUAL PRINT COLOUR OPTIONS



17 SS Dual Colour Options



Item also available **UNBRANDED** with or without SS branding



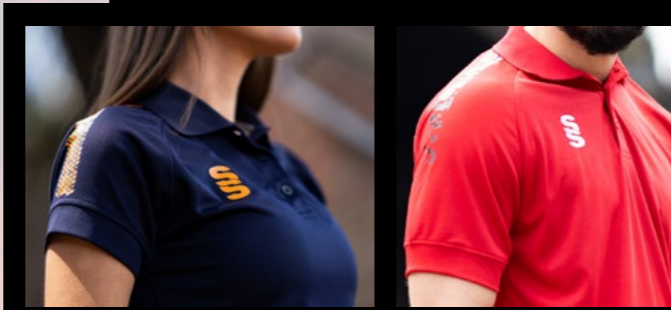
Black White

SURRIDGE SPORT

NEW!
Dual Range - Stripe design also available



EST. 1867



DUAL TRAINING RANGE

We can also produce a bespoke print with a minimum of 100 prints (50 garments)

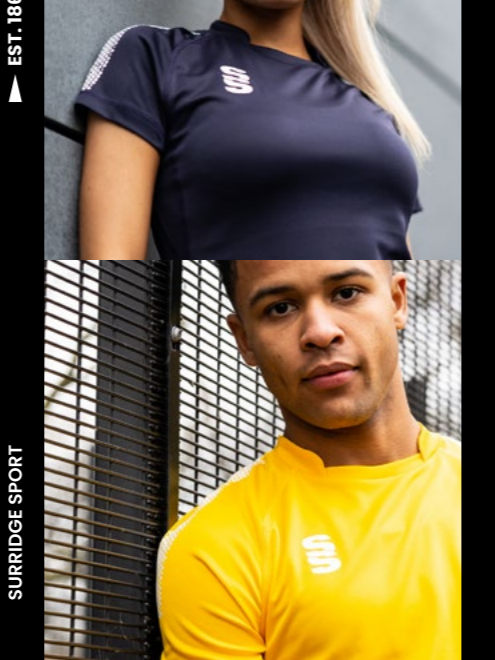
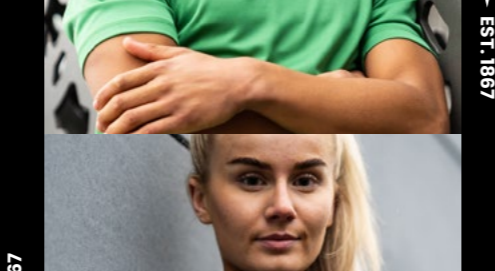
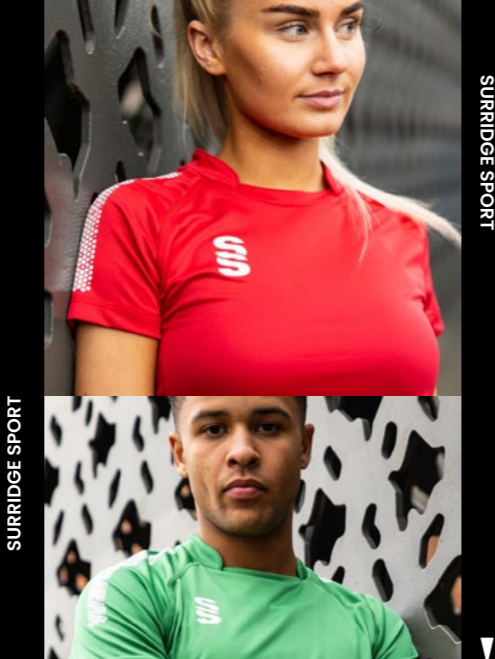
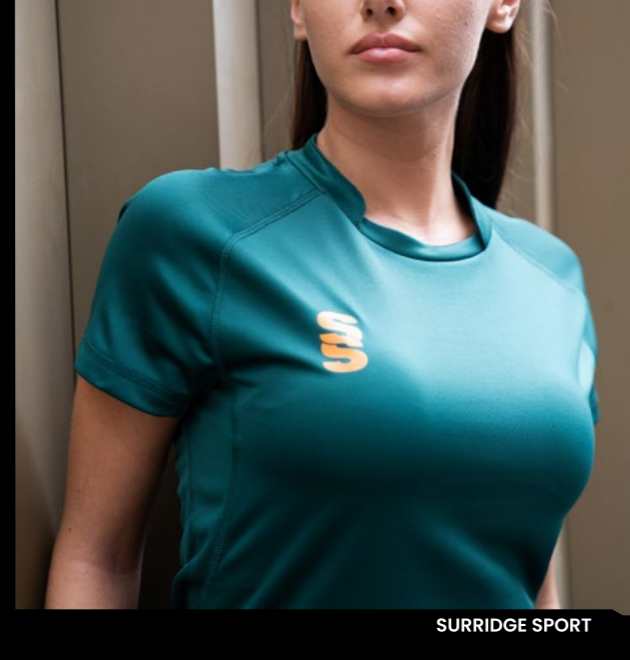
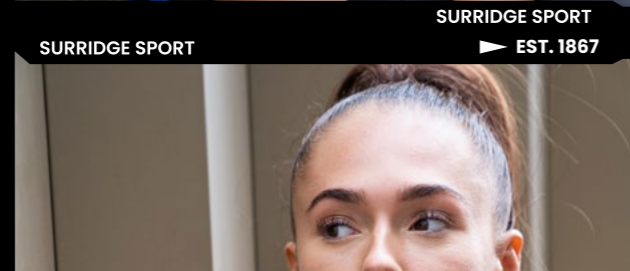
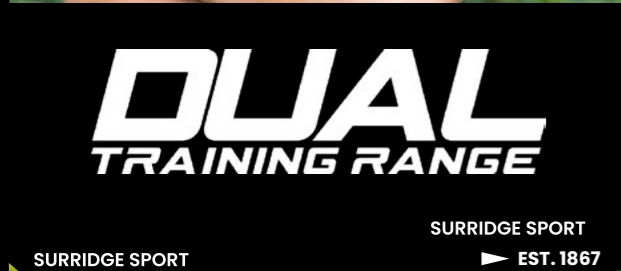


UNBRANDED

All products showing the Unbranded logo are available without the SS logo.

SURRIDGE

SURRIDGE



SURRIDGE SPORT EST. 1867

Black White

Navy Emerald

Red White

Bottle White

Royal White

Maroon White

White Black

Amber White

Sky White

Orange White

Purple White

Emerald White

Dual Training Shirt

DU009

- » Performance Polyester pique fabric with contoured underarm side panel in breathable reverse pique fabric
- » Forward side seam detail with flat-lock stitching for the ultimate smooth and comfort
- » Stand collar and raglan seam sleeve and contrast colour graphic print available on shoulders
- » Contoured underarm side panel in breathable reverse pique fabric

Unisex Sizes

SJ MJ LJ YTH
S M L XL XXL XXXL

NEW!

Dual Stripe design also available



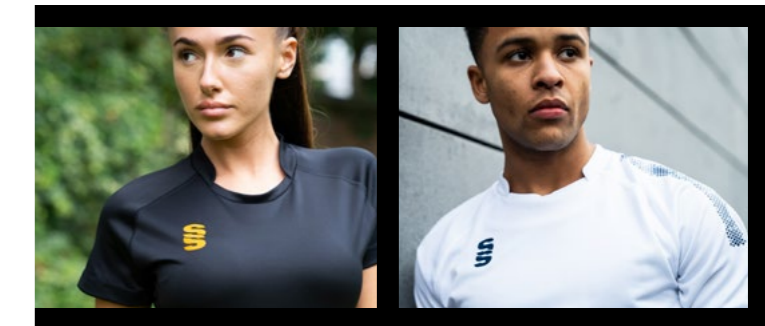
Also available in

XXSJ (3-4yrs) XSJ (5-6yrs)

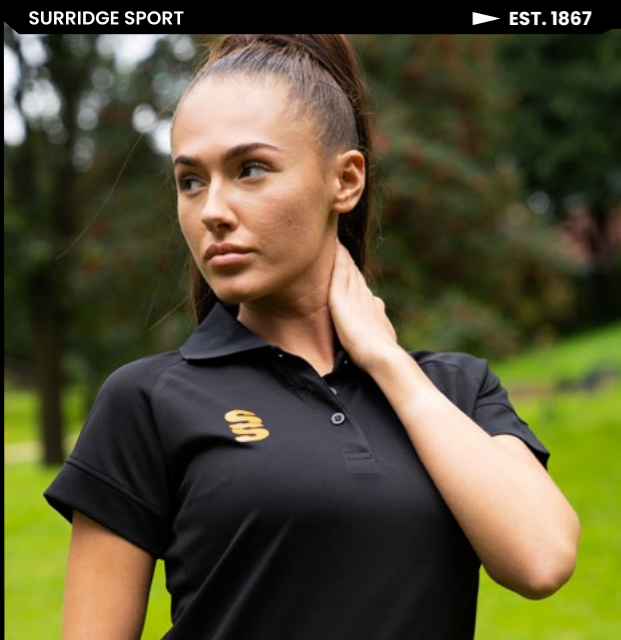
Ladies Sizes (with a slight capped sleeve)

4/6 (xSmall) 8/10 (Small) 12/14 (Medium) 16/18 (Large)

17 Dual Colour Options



DUAL
TRAINING RANGE



SURRIDGE SPORT EST. 1867



SURRIDGE SPORT EST. 1867

DUAL
TRAINING RANGE



SURRIDGE SPORT EST. 1867



SURRIDGE SPORT

SURRIDGE SPORT

EST. 1867



White

Navy



Black

Royal

Red



NEW!
Dual Stripe
design also
available



Dual Polo DU018

- » Performance Polyester pique fabric with contoured underarm side panel in a breathable reverse pique fabric
- » Placket neck collar and colour contrast Dual print on both shoulders
- » Branded **VAPADRI™** neck tape
- » Choice of SS and Dual Print colours to suit your branding

Unisex Sizes

SJ MJ LJ YTH
S M L XL XXL XXXL

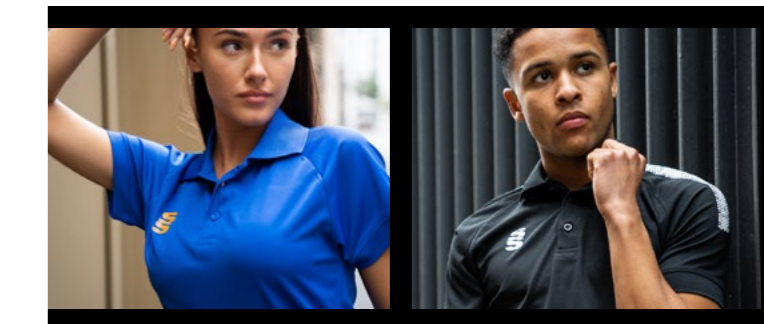
Ladies Sizes (with a slight capped sleeve)

4/6 (xsmall) 8/10 (small) 12/14 (Medium) 16/18 (Large)

17 Dual Colour Options



Item also available **UNBRANDED** with or without SS branding



DUAL
TRAINING RANGE

CRAFTED BY
EST.

Navy Marl



NEW!
Dual Stripe
design also
available



Dual Gym Shirt DU014

- » Performance polyester marl fabric with contoured underarm side panel in breathable interlock fabric
- » Crew neck collar and contrast colour 'Dual' graphic print on both shoulders
- » Choice of SS and Dual Print colours to suit your branding

Unisex Sizes

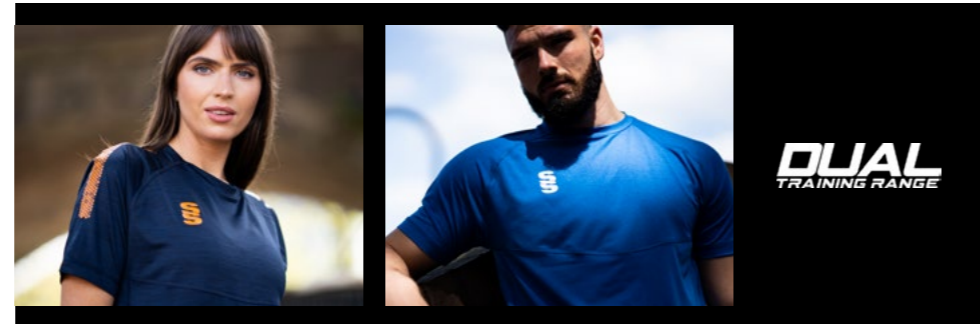
SJ MJ LJ YTH
S M L XL XXL XXXL



Black Marl

Royal Marl

Grey Marl



DUAL
TRAINING RANGE

Royal Marl



NEW!
Dual Stripe
design also
available



Dual Performance Top DU013

- » Made from melange Pro-Polyester with a lightly brushed feel and soft inner fleece lining
- » Subtle marl printed body
- » 1/4 Zip neck detail for breathability
- » Dual print on both shoulders and reflective zip detailing
- » Choice of SS and Dual Print colours to suit your branding

Unisex Sizes

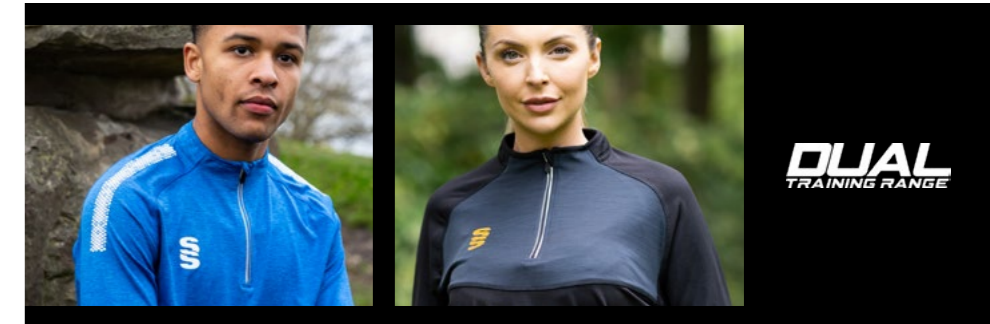
SJ MJ LJ YTH
S M L XL XXL XXXL



Black Marl

Grey Marl

Navy Marl



DUAL
TRAINING RANGE



SURRIDGE SPORT

EST. 1867



SURRIDGE SPORT

EST. 1867

DUAL
TRAINING RANGE

SURRIDGE SPORT

SURRIDGE SPORT
EST. 1867

SURRIDGE SPORT

SURRIDGE SPORT
EST. 1867



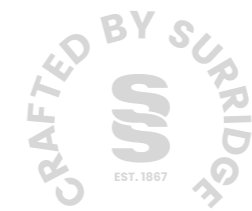
SURRIDGE SPORT



Navy



Royal



Black (Female fit)

Grey

Dual Zipped Hoodie DU012

- » 100% performance polyester and bonded fleece lining
- » Modern slim fit with toggles on hem for adjustable sizes
- » Full zip hoodie with reflective, water resistant zip detail
- » Two large zip pockets with soft fleece lining and elastic binding at sleeve ends
- » Toggle features to keep out the wind
- » French shoulder seam for comfort and dual print to shoulder
- » Choice of SS and Dual Print colours to suit your branding

Unisex Sizes

SJ MJ LJ YTH
S M L XL XXL XXXL

NEW!

Dual Stripe design also available



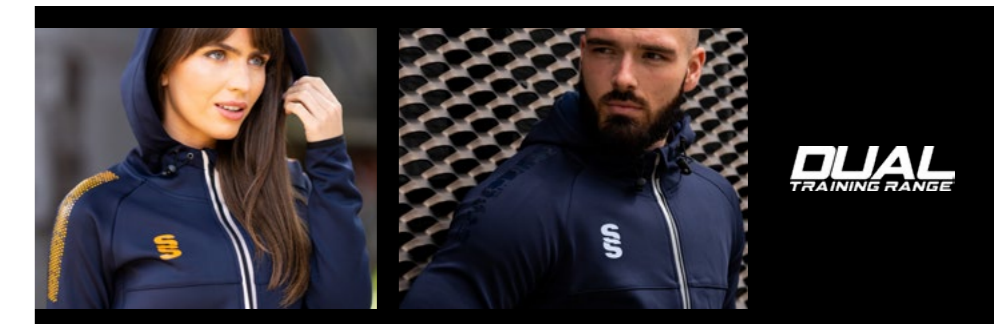
17 Dual Colour Options



Item also available

UNBRANDED

with or without SS branding



Dual Pro Training Vest

DU033

- » 100% performance polyester melange super stretch material
- » Nicely fitted shirt perfect for the gym and those warm days training outside
- » Contoured underarm side panel in breathable reverse pique fabric



Unisex Sizes

SJ MJ LJ YTH
S M L XL XXL

Navy

Black

Contoured underarm

17 Dual Colour Options



Item also available **UNBRANDED** with or without SS branding

Dual Slim Tek Pants

DU019

- » Interlock Polyester material with Polyester Lycra insert at calf
- » Two invisible zip pockets for security
- » Choice of SS and Dual Print colours to suit your branding

Unisex Sizes

SJ MJ LJ YTH
S M L XL XXL XXXL

Navy

Also available in

XXSJ (3-4yrs) XSJ (5-6yrs)

Black



NEW!
Dual Stripe design also available

17 Dual Colour Options



Item also available **UNBRANDED** with or without SS branding

Dual Short

DU020

- » Poly peached Micro-fibre blend with modern shorter leg length, more suited to gym and physical exercise
- » Elasticated hem with drawcord for flexibility and comfort

Unisex Sizes

SJ MJ LJ YTH
S M L XL XXL XXXL



Navy

Black

Royal

17 SS Colour Options



Item also available **UNBRANDED** with or without SS branding

Dual Active Short

DU029

- » Soft feel performance stretchy microfibre material
- » Half leg with poly/lycra inner
- » Now with longer inner pant to be lower than the short

Unisex Sizes

XXS-UK 4, XS-UK 6, S-UK 8,
M-UK 10, L-UK 12, XL-UK 14, XXL-UK 16



Navy

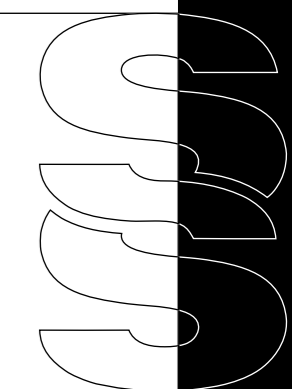
Black

Longer Inner Pant

17 SS Colour Options



Item also available **UNBRANDED** with or without SS branding



SURRIDGE



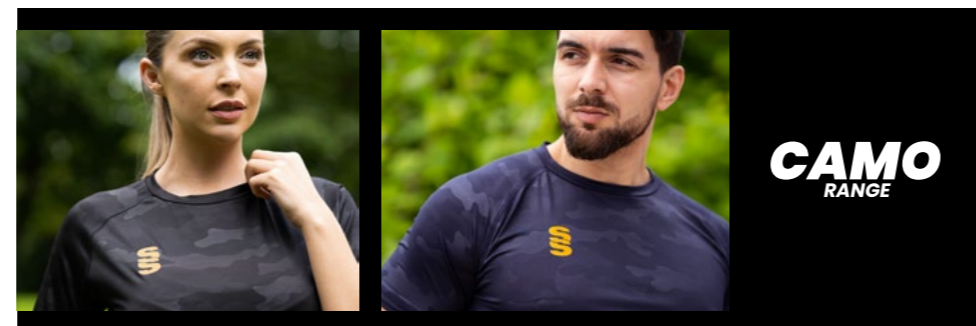
Camo Training Shirt DU031

- » Performance camo interlock fabric with contoured underarm side panel
- » Forward side seam detail with flat-lock stitching for ultimate comfort
- » Crew neck self fabric collar and raglan seam sleeve and contrast colour graphic print available on shoulders
- » SS logo colour to match the Dual Print

Unisex Sizes

SJ MJ LJ YTH
S M L XL XXL XXXL

NEW!
Dual Stripe design also available



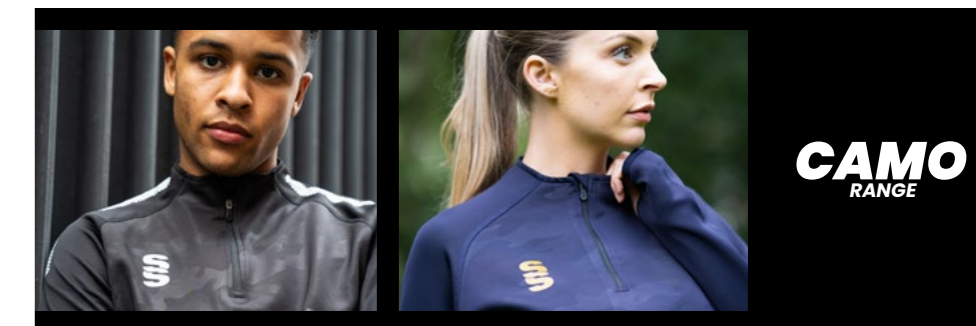
Camo Performance Top DU032

- » 275 gsm structured soft feel camo woven polyester material
- » Ultra modern fitted ¼ zip collar with fitted sleeves and binded sleeve hems
- » Adjustable draw cords in hem
- » Dual print on both shoulders and reflective zip detailing
- » SS printed to chest to match Dual Print colour

Unisex Sizes

SJ MJ LJ YTH
S M L XL XXL XXXL

NEW!
Dual Stripe design also available



SURRIDGE

FUSE RANGE

Our entire Fuse Range is available in 17 SS colours or choose Unbranded - without SS branding

YOUR COLOURS YOUR WAY

FUSE PRINT COLOUR OPTIONS



17 SS Colour Options



Item also available **UNBRANDED** with or without SS branding



Black
White
White

SURRIDGE SPORT

EST. 1867

NEW!
Fuse Range - Stripe design also available



Navy
White
White

Black
White
White

17 Fuse Colour Options



Item also available **UNBRANDED** with or without SS branding

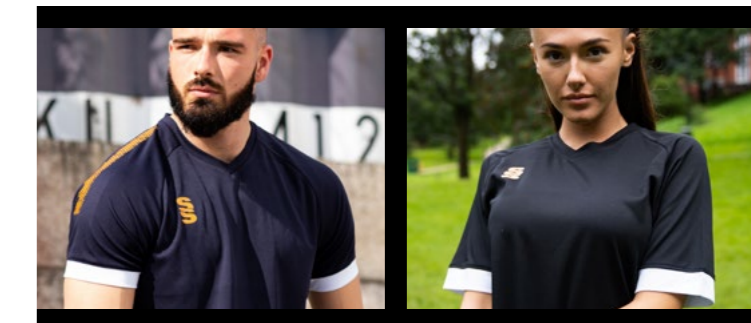
Fuse T-Shirt DU365

- » Performance Polyester pique, crossover V-Neck
- » Forward position side seams with contrast insert
- » Contrast back yoke
- » French seam shoulder construction for comfort and durability
- » Forward side seams with contrasting coloured insert
- » Printed SS logo to chest
- » Fabric weight: 150gsm

Unisex Sizes

SJ MJ LJ YTH
S M L XL XXL XXXL

NEW!
Fuse Stripe design also available



FUSE RANGE

CRAFTED BY US EST. 1867



Black

Navy



Item also available **UNBRANDED** with or without SS branding

Fuse Polo Shirt

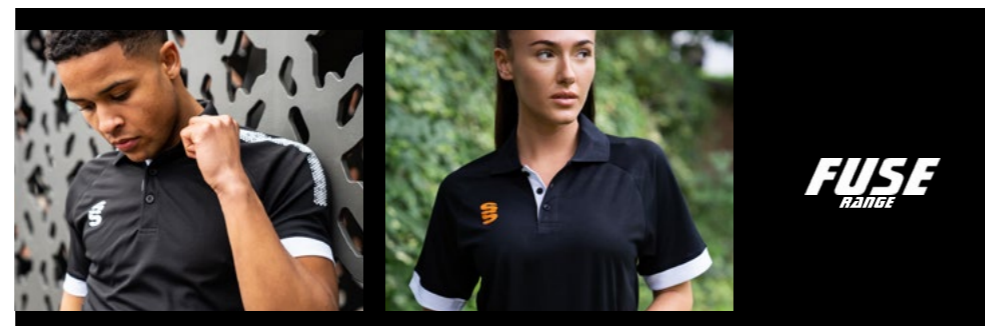
DU366

- » Performance Polyester pique, 3 button placket with 1x1 polyester rib collar
- » Forward position side seams with contrast insert
- » Contrast back yoke
- » French seam shoulder construction for comfort and durability
- » Forward side seams with contrasting coloured insert
- » Printed SS Logo to chest
- » Fabric weight: 150gsm

Unisex Sizes

SJ MJ LJ YTH
S M L XL XXL XXXL

NEW!
Fuse Stripe design also available



FUSE
RANGE



Black

Navy



Item also available **UNBRANDED** with or without SS branding

Fuse 1/4 Zip Performance Top

DU368

- » Made from heavy brushed french terry material to give warm and comfort
- » 1/4 Zip neck detail for breathability
- » Dual print on both shoulders and reflective zip detailing
- » Personalise the Fuse range with SS logo colour to match the chosen Dual Print
- » Printed SS logo to chest
- » Fabric weight: 275gsm

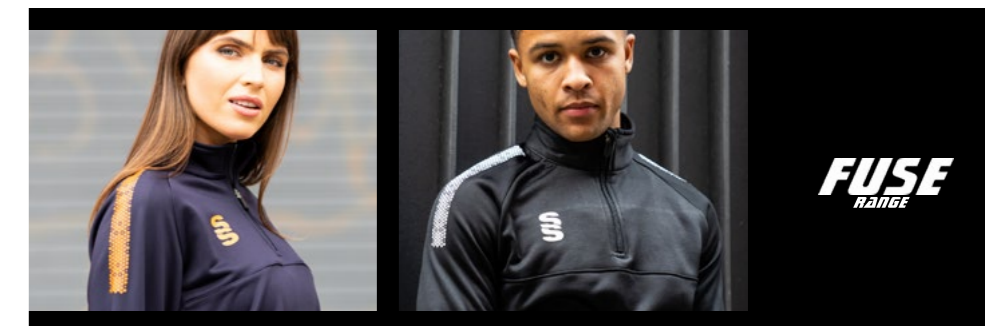
Unisex Sizes

SJ MJ LJ YTH
S M L XL XXL XXXL

Also available in

XXSJ (3-4yrs) XSJ (5-6yrs)

NEW!
Fuse Stripe design also available



FUSE
RANGE



Black

Navy

17 Fuse Colour Options



Item also available **UNBRANDED** with or without SS branding

Fuse Hoodie

DU367

- » Polyester and Cotton fabric blend
- » French seam shoulder construction for comfort and durability
- » Branded eyelets with tube draw cord
- » Large front hoodie pocket
- » Forward side seams with contrasting insert
- » Personalise the Fuse range with SS logo colour to match the chosen Dual Print
- » Printed SS logo to chest
- » Fabric Weight: 300gsm.

Unisex Sizes

SJ MJ LJ YTH
S M L XL XXL XXXL

NEW!
Fuse Stripe
design also
available



Fuse Shorts

SUR457

- » Performance Polyester
- » Matches to the Polo and T-Shirt in the same range
- » No pockets
- » Elasticated hem for comfort

Unisex Sizes

SJ MJ LJ YTH
S M L XL XXL XXXL

Also available in

XXSJ (3-4yrs) XSJ (5-6yrs)



Black

Navy

Royal



EST. 1867

SURRIDGE SPORT

EST. 1867

SURRIDGE SPORT

SURRIDGE SPORT EST. 1867

FUSE
RANGE



SURRIDGE SPORT

SURRIDGE SPORT

SURRIDGE



Navy

Dual Training Jacket DU002



- » Wax Coated outer shell, light and fully waterproof
- » Reflective, water resistant zip detail and 2 zip pockets
- » Mesh lined hood with adjustable toggles
- » Underarm vents to stay breathable but warm

Unisex Sizes

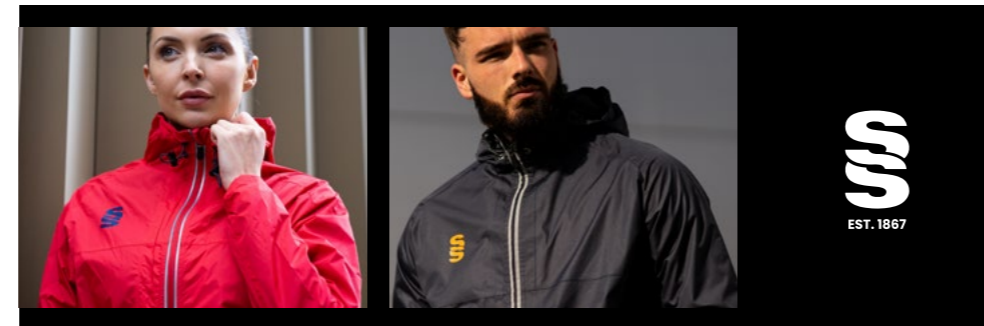
SJ MJ LJ YTH
S M L XL XXL XXXL



Red

Royal

Black



Black

Dual Rain Jacket DU003



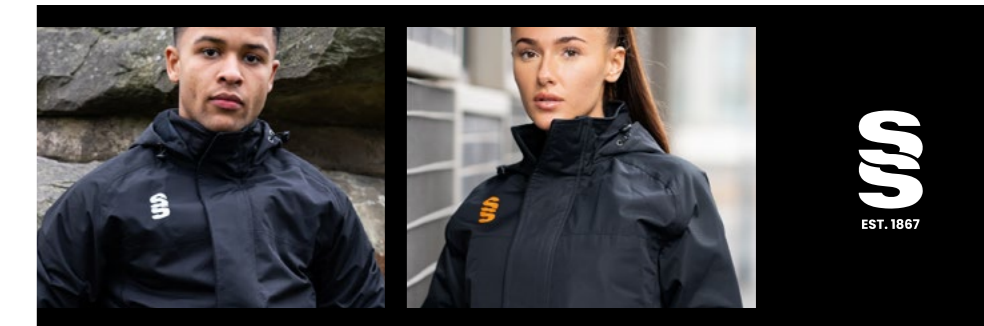
- » Thick Wax Coated outer shell, rain-proof and soft fleece lined
- » Two zip pockets and placket zip cover on body and pockets
- » Taped seams so fully waterproof

Unisex Sizes

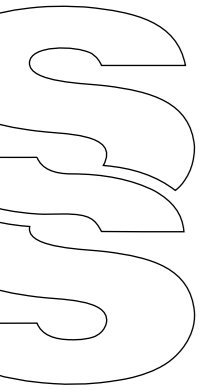
SJ MJ LJ YTH
S M L XL XXL XXXL



Navy



CRAFTED BY
UNBRANDED
EST. 1867



Black

Navy

NEW! Dual Elite ¼ Zip Training Jacket DU381



- » Modern overhead rain jacket with hood
- » Hoody and body is lined in the same material which has a light brush for a little warmth
- » The arms are well fitted for a modern look
- » Both front pockets are over sized with the same brushed lining for extra warmth
- » The material is matt and waterproof

Unisex Sizes

SJ MJ LJ YTH
S M L XL XXL XXXL



Navy

NEW! Dual Puffer Jacket DU181



- » A cosy, highly fashionable, fitted and soft to touch down feel jacket with hand filled poly wadding for superior warmth
- » StormDri water repellent rip stop micro peach outer
- » The perfect lightweight jacket for cold and damp winter days

Mens Sizes

S M L XL XXL XXXL

Ladies Sizes

XS S M L XL XXL



Ladies Back View Navy

Mens Back View Navy



Supersoft Padded Jacket R233



- » Showerproof and Windproof
- » Hinged locker patch in neck for self-branding, soft bound cuff and hem, contrast lining and trim
- » Reflective hip detail with integral hood, full front zip
- » Zip pockets and hangtag
- » Solid colours ideal for schoolwear, easy to pack, super soft, lightweight and warm

Mens Sizes

S M L XL XXL XXXL

Ladies Sizes

XS S M L XL XXL

Ages

2/3 3/4 5/6 7/8

9/10 11/12 13/14



Black



Navy

17 SS Colour Options



Item also available

UNBRANDED

with or without SS branding

Holkham Down Feel Jacket R181



- » A cosy, highly fashionable, fitted and soft to touch down feel jacket with hand filled poly wadding for superior warmth
- » StormDri water repellent rip stop micro peach outer
- » The perfect lightweight jacket for cold and damp winter days

Mens Sizes

S M L XL XXL XXXL

Ladies Sizes

XS S M L XL XXL



Navy



Black

17 SS Colour Options



Item also available

UNBRANDED

with or without SS branding

Core Nova Lux Padded Gilet R223



- » Great cold weather protection
- » Super warmth without any weight
- » The Nova Lux padded bodywarmer offers comfort and style, the perfect layering gilet

Unisex Sizes

XS S M L

XL XXL XXXL



Navy



Black

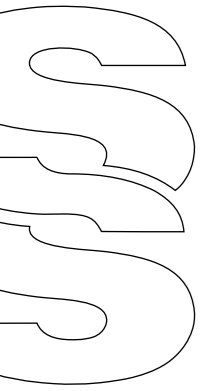
17 SS Colour Options



Item also available

UNBRANDED

with or without SS branding



Mens Fit
Black

Ladies Fit
Navy

Ice Bird Padded Gilet R193



- » The gilet version of the modern classic design
- » This super lightweight and perfectly tailored contemporary gilet offers amazing warmth without weight from it's super air-soft handle and hand filled polyester wadding

Mens Sizes

S M L XL XXL

Ladies Sizes

XS S M L XL XXL



Orange

Frost Grey

Royal



Black

Navy

NEW! Padded Bodywarmer R244X



- » Showerproof, breathable and windproof
- » Soft elasticised armhole and hem
- » Contrast underarm vertical panelling
- » Full front zip with chin guard
- » Inside tear release pocket
- » Two zip-closing pockets
- » Comfortable longer length

Unisex Sizes

XS S M L XL XXL XXXL



Grey

Back View



CRAFTED BY SS EST. 1867

Pro Windbreaker

BEHR-003



- » PU (Polyurethane clear coating), shower resistant & wind resistant mesh inner lining
- » Reinforced seams and draw cord adjusters at hem
- » Concealed embroidery access for easy branding

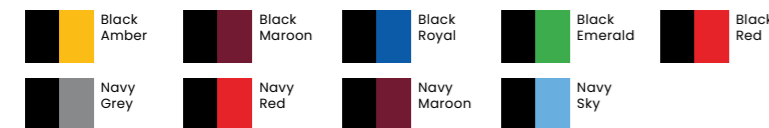
This item may be available with trims. If applicable, you may choose your own colour and customise the position in the personalise menu. Image may not reflect your chosen colour and is for illustration purposes only.

Unisex Sizes

MJ LJ YTH
S M L XL XXL XXXL

Colours

Top/Sleeve



17 SS Colour Options



Item also available **UNBRANDED** with or without SS branding



Black Red

Navy Sky



Navy Reverse

Navy

NEW! Run Out Top

DU001

- » 100% Polyester Bonded Run Out Top

This item may be available with trims. If applicable, you may choose your own colour and customise the position in the personalise menu. Image may not reflect your chosen colour and is for illustration purposes only.

Unisex Sizes

SJ MJ LJ YTH
S M L XL XXL XXXL



Black

NEW!
Dual
Stripe
design
also
available

17 Trim Colour Options



Item also available **UNBRANDED** with or without SS branding

SURPRIDGE



Black



Navy

NEW! Thermal Robe

BEHR-004



- » Waterproof and windproof outer shell fabric made from 100% recycled nylon
- » Super-warm synthetic lambswool lining made from 100% recycled polyester
- » Tailored, fitted sleeves with hook and loop fasteners at the wrist
- » Treated with eco-friendly water-repellent technology
- » Full length 2-way reversible zip
- » Minimal sealed seam construction
- » Deep, fleece-lined external zip pockets
- » Huge 'A4' size internal, soft-lined 'poacher' pocket
- » Internal waterproof zip entry pocket - ideal for phone/wallet
- » Super light construction - approx 1.3kg (dependent on size)

Designed to let you get changed anywhere, whilst protecting you from the elements, Thermal Robe is an essential piece of kit for all outdoor activities. The long sleeve design provides extra warmth and is ideal for those waiting to compete or watching sporting events. The jacket can be used multiple times throughout the day, over wet kit, without the need for drying between uses.

Thermal Robe is one tough bit of kit. It's been designed and tested to stand the wear and tear of an active lifestyle, cold conditions and any challenge you face.

Unisex Sizes

YTH S/M L/XL



Black

Navy



Black



Navy



Black

Full Length Sub Coat

BEHR-001

- » 100% Polyester 110gsm Ripstop
- » Wind resistant with quilted lining
- » 2 side zipped pockets
- » Adjustable velcro cuffs
- » Ideal for embroidery

Unisex Sizes

SJ LJ YTH S M L XL XXL XXXL



17 SS Colour Options



Item also available **UNBRANDED** with or without SS branding



CRAFTED BY SURRIDGE
UN EST. 1867

Dual Baselayer Legging DU040

- » Baselayers are tight fitting garments which help stabilize muscles to help improve performance
- » SS logo available in 17 SS colours

Unisex Sizes

SJ MJ LJ YTH

S M L XL XXL



Dual Baselayer Short DU035

- » Baselayers are tight fitting garments which help stabilize muscles to help improve performance
- » SS logo available in 17 SS colours

Unisex Sizes

SJ MJ LJ YTH

S M L XL XXL

Dual Long Sleeve Baselayer DU034

- » Baselayers are tight fitting garments which help stabilize muscles to help improve performance
- » SS logo available in 17 SS colours

Unisex Sizes

SJ MJ LJ YTH S M L XL XXL



All baselayers available in 17 SS Colour Options



Item also available **UNBRANDED** with or without SS branding

SURRIDGE

Snowstar Beanie BC450

- » 100% Soft-touch acrylic
- » Dual style - cuffed or slouch
- » Two-tone pom pom
- » Double-layer knit
- » Ribbed cuff
- » Hand wash only

Size

One Size

Bespoke Option:

Scan the QR code below or visit www.surridgesport.com/kitbuilder



Custom-Made Ties



- » 100% Polyester. Minimum order applies.
- » What makes our ties special is that they are completely custom-made to your design, our team will help guide you through the easy process of personalising your ties from start to finish
- » We can manufacture virtually any design incorporating your club name, logo, design or message to meet your individual specification
- » Our custom-made ties are extremely affordable and finished to a very high standard



Products shown are example items only. Scan the QR code above or visit: www.surridgesport.com/en/kitbuilder#/catalogue/ties

NEW! Toiletry Bag BG332

- » A travel essential, sized for anything from toiletries to tech accessories, a reversed PU zip adds to the clean architectural design, while a minimal, muted colour palette enhances gender-neutral appeal
- » 100% Recycled polyester with matte-look PU coating
- » Water-repellent fabric

Bag Capacity: 4 litres

Dimensions: 25 x 12 x 15cm

Washing Instructions: Sponge clean only



Bespoke Badge Option:

Add your Club Badge in full colour. Sponsor logos can also be added.

Black

Clay

Surridge Sport

BESPOKE BAG RANGE

Ready for school or after-school sport our range of bags are easy to carry and comfortable.

We have a range to suit all ages in a wide selection of designs, colours and styles. Whatever your favourite sport, our range will give you what you need.

Customise your bag by adding your School Crest in full colour. Sponsor logos can also be added.

Visit:
www.surridgesport.com
for more details.



For more details visit www.surridgesport.com
Compliment your kit design by adding one of our bespoke sports bags.



EST. 1867

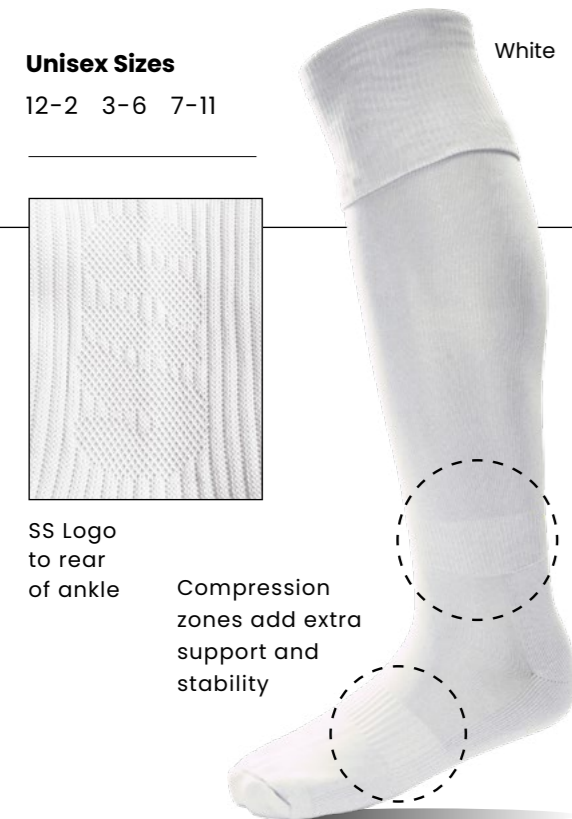


EST. 1867

Playing Socks SURF006

- » The Match socks are made with compression zones to add stability and shock absorption
- » Alongside the compression zones, the sole is made from cotton for padding and extra support on the ankle, with the rest of the sock made from high quality Polyester/Acrylic
- » Inclusive SS Logo to rear of ankle

Unisex Sizes
12-2 3-6 7-11



Red Black Emerald Maroon Navy (Sport)



Bottle Navy (Blade) Orange Royal Yellow



Amber Black Black White Emerald White Emerald White Red Black Yellow Royal



Maroon White Navy/Red White Navy Sky Navy White Red White Sky White

Surridge Single Band Sock SURF027

- » The Single Band Socks feature compression zones to add stability, shock absorption and superb comfort with an extra padded cotton sole
- » Available in a range of colours
- » Surridge logo to reverse of all socks

Unisex Sizes
12-2 3-6 7-11



Surridge Quarter Sock

SUR480

- » A modern quarter sock made with Acrylic, a cotton sole for extra comfort
- » Printed gripper on the sole for extra grip
- » A perfect pair of socks for playing football, rugby or gym wear
- » Minimum order of 300pcs

Unisex Sizes

3-6 7-11



Royal



Red



Emerald



White



Maroon



Black



Navy

Bespoke Badge Option:

You can replace the SS logo with your own School Crest for a more bespoke look. Grippers will also match to School Crest.



EXCLUSIVE VAPADRI™ Technology Designed for Athletes

ECODRI is an exclusive range of materials made with VAPADRI™ technology for Surridge Sport and other major sports brands. EcoDri is a 100% recycled material that is used in the dye sublimated process for most playing garments. Surridge Sport can offer an EcoDri material for all playing garments.

EcoDri is made from 100% recycled polyester yarn, produced from water bottles. This process is managed through our own research and development with our material factories in the Far East. All the EcoDri material is made with VAPADRI™ technology, meaning that the performance of the material is still to the highest standards that we offer. The EcoDri material is still at a premium in price but we are convinced that our pricing is still the most competitive on the market against our competition.



ECO DRI

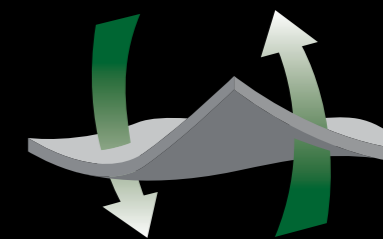
BY



THIS MATERIAL IS MADE FROM 100% RECYCLED POLYESTER YARN, PRODUCED FROM RECYCLED WATER BOTTLES.



This performance fabric is designed for athletes. Garments made with VAPADRI™ technology can help the wearer stay "DRI" and as a result create zero distraction, allowing you to concentrate 100% on the game.



LIGHTWEIGHT



WICKING



BREATHABLE



ANTI-STATIC



MACHINE WASHABLE



FAST DRYING

SURRIDGE

SS

NEW! Water Bottle with Straw (600ml) DU045

- » Water Bottle with time markings, Motivational Drink Bottles Leakproof and BPA-free (Blue).
- » **Motivational Quote & Time Marker:** Our bottles are featured with a frosted and translucent appearance helps you measure your daily water intake. This sport bottle with unique inspirational quotes and time markings will always remind you to take in the right amount of water to keep you hydrated throughout the day. Perfect for the gym, yoga, runners, travel, hiking, cycling, camping, school and office use.
- » **BPA Free & Premium Material:** This 600ml sports water bottle is great for both kids and adults, which is BPA-free, made of food-grade and safe Tritan material. Thickened water bottles body and anti slip canteen surface purpose to protect the bottle from falling and breakage.
- » **100% Leakproof:** The water bottle is equipped with a durable wrist strap and a Leak-proof seal inside the lid. It is 100% leakproof, durable and impact-resistant, making it easy to carry around and convenient for on-the-go hydration. And a safety lock prevents accidents from opening the lid.
- » **One Hand Opened:** Simply open with one hand by clicking the button on the lid, which is more convenient and quicker. The soft durable silicone nozzle make you enjoy spill-proof sipping. The 600ML capacity of the water bottle is easy to carry and lightweight.
- » **Easy Cleaning:** For best results we recommend hand wash, but it also can be dishwasher safe. Comes with 1 pcs bottle brush and straw brush to make cleaning easy and quick. A wide mouth makes cleaning and filling fruits & ice cubes easier.



Black

NEW! Vacuum Stainless Steel Bottle (500ml) DU046

- » Vacuum insulated stainless steel bottle with an iconic design
- » The insulated 18/8 stainless steel keeps drinks hot or cold for several hours
- » Tested and approved under Food Safe Legislation (LFGB), and tested for phthalates content according to REACH regulations
- » Featuring a base that fits in most cup holders
- » Volume capacity is 500ml
- » Presented in a recycled cardboard gift box
- » Drinking bottle in RPET with rubberised finish (frosted transparent) and stainless steel cap with inner RPET lid and silicone ring
- » BPA free and leak-free

Iconic Design Double Wall Stainless Steel Bottle



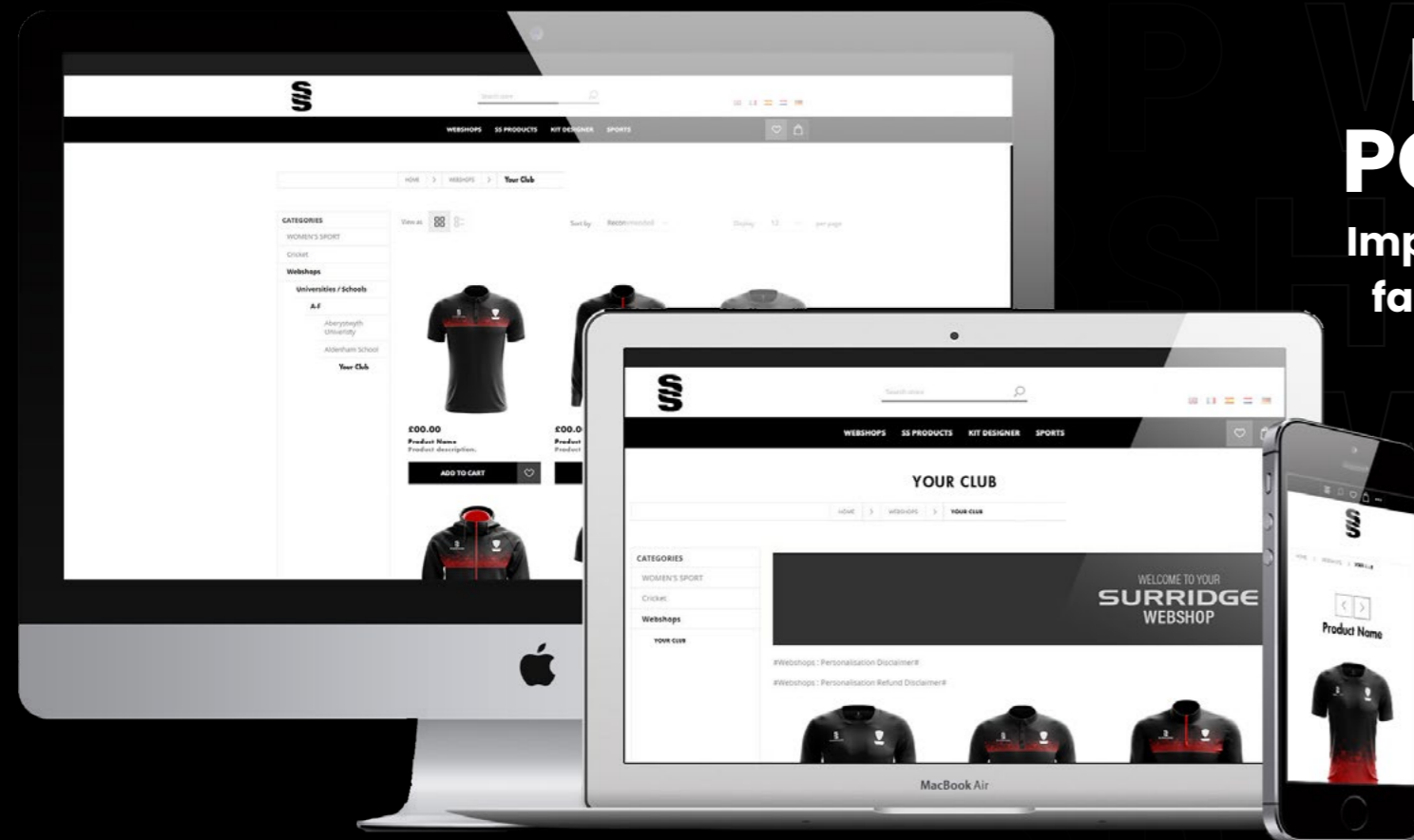
CREATE YOUR OWN CLUB WEBSHOP

Completely Free
No additional charges for setting up your own club webshop.

Easy Personalisation
Add optional extras such as print, embroidery, initials, names and numbers.

Hassle Free
No need to collate team orders as everyone can order individually.

Quick Lead Times
Stock items have a fast turnaround within 10 working days from order placement.



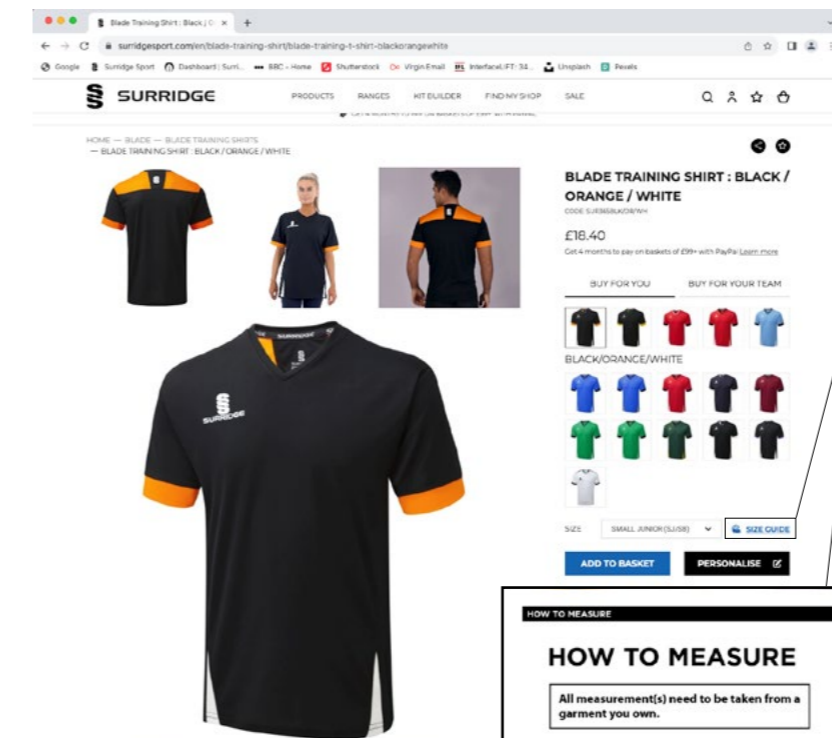
NEW TRADE PORTAL 2024

Improved styling, lots more facilities and functionality

SIZE GUIDES

All products requiring a size guide have their own individual guide and information on How To Measure on the chosen product web page (See example below)

1). Simply visit www.surridgesport.com or scan the QR Code bottom left



2). Select the chosen product, ie: Blade Training Shirt plus colour

3). Click on: **SIZE GUIDE**
Which will then take you to the product size guide window shown below



Scan me from your device



HOW TO MEASURE

All measurement(s) need to be taken from a garment you own.

YOU WILL NEED:

- TAPE MEASURE** With elastic ends (cm and mm)
- T-SHIRT YOU OWN** A garment you own, from any brand, with a comfortable fit.

- Find a T-shirt you own:** Choose a T-shirt you currently own (any brand) which is the most comfortable fit for you.
- Chest Measurement:** Lay the top down on a flat surface and measure the distance across the T-shirt, from one under arm to the other, as shown in point A.

SIZE CHART* (all measurements given in cm)

MEASUREMENT DESCRIPTION	XS	S	M	L	XL	XXL	XXXL	4XL	5XL
ALL MEASUREMENTS IN METRIC (CM)	84cm	91cm	98cm	106cm	114cm	122cm	130cm	138cm	146cm
CHEST	36	37	39	42	45	47	49	52	54

* Please allow for a plus or minus 1-2 cm tolerance in our garments. Material is also a factor in how a garment can fit you. We will have more details in the product description regarding the material stretch. If the material is stretchy then you can wear the garment as a tighter fit as the material will stretch. Please be aware that the above measurements are of the garment and not of your body.

WASHING INSTRUCTIONS

Surridge Sport garments are manufactured from top quality fabrics. All fabrics & logos undergo stringent quality tests to ensure durability and wash-ability. They will last for many years if properly cared for. When washing garments always refer to the instructions on the garment label.

Playing Kits

First wash – Always wash shirts, shorts and socks inside out & separately to remove surface dye.

Avoid leaving kits folded or bundled together for any length of time whilst damp or soiled. Remove excess mud and wash as soon as possible after use to avoid stains from setting.

Garments may discolour due to staining by substances such as mud, grass, petroleum jelly etc, which may not entirely be removed by washing alone. Treat stains directly with a stain remover as soon as possible.

Take care not to use stain remover on transfers applied to the garment as this may effect the quality of the print. Some of the toughest stains may require more than one treatment.

- Do not over load the washing machine and always wash light and dark colours separately.
- Do not wash above the temperature stated on the garment label. (many items 30°C)
- Do not use fabric softener.
- If the garment can be tumble dried (see care label) always tumble dry cool.
- Never iron printed motifs

Training Wear / Outer Wear

Dirt on outer wear (padded jacket, rain jacket, training jacket) should be wiped off with a damp cloth. These garments do not require regular washing as this will remove the shower proofing. If necessary wash inside out, no hotter than 30 degrees on a synthetic wash.

- Do not use fabric softener.
- Do not tumble dry.
- Never iron printed motifs.

Surridge Sport does not accept liability for discolouration or damage to garments due to incorrect laundering.

+44 (0) 1282 418 418



sales@surridgesport.com



SDL Group Ltd, Britannia Centre,
Network 65 Business Park, Burnley, Lancashire, BB11 5ST



WWW.SURRIDGESPORT.COM

All information within this catalogue was correct at the time of production and is subject to change without prior notice.