

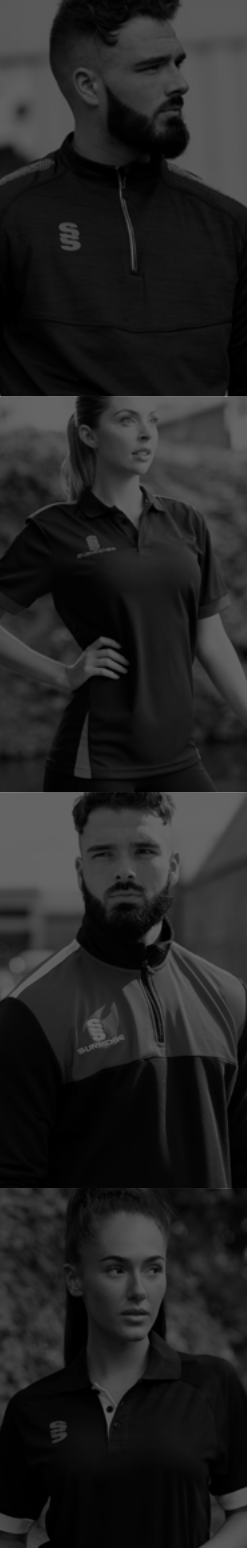


EST. 1867

*Crafted by Surridge*

**GOLF  
SPORTSWEAR  
Catalogue**





## Contents:

- » Company Background
- » Bespoke Training Kit
- » **NEW!** Impact Range
- » Polos
- » 1/4 Zips
- » Hoodies
- » Shorts & Pants
- » Jackets & Coats
- » Socks, Caps and more
- » Incentives-uk Golf
- » Webshop
- » Size Guide

## NEW for 2025!

### WHITE LABEL

**Surridge is excited to be launching our very own WHITE LABEL range.**

This range will give you the opportunity to rebrand any of our **WHITE LABEL** products with your very own logos. Trust in our 150 years of experience to enhance your product offering to your customers.

**Premium Quality • Great Price • Your Brand**

**Look out for the logo throughout the catalogue.**



In 1867 Percy Stuart Surridge created a sports brand. He applied the principles of tradition and craft, with the concept of bringing innovation to improve performance, creating products defined by craftsmanship, originality and Britishness.

Today, we are a brand that not only connects with our markets and consumers but keeps with our origins and principles set over 150 years ago.

Surridge Sport head office, warehousing and production facilities are based in Burnley, Lancashire. The site has in house embroidery, manufacturing, print and embellishment facilities along with a dedicated design and product development team and a fully equipped distribution/customer service team. This allows Surridge the flexibility to manage and service its portfolio of accounts simply and efficiently, maintaining day to day fulfilment of orders as well as looking to make improvements and handle any quick turnaround of kit that may be required. Careful planning with account management shall ensure the organisation's needs will be prepared for in advance and progressed in an organised and agreed fashion.

The company is wholly family owned in the UK and is self-financed operating from our own custom built facilities in Lancashire of 60,000 sq ft. We will be happy to produce copies of our audited accounts to satisfy any due diligence procedures and we formally extend an open invite to any of your personnel to visit us at any time.

Surridge Sport uses factories in the Far-East for production of the proposed range. We have developed strong relationships with the suppliers and have worked with them for many years. We also have employees based in the factories to help manage the supply.

## Objective

Surridge Sport aim to supply you with a commercially attractive proposal and a high performance playing and training range at competitive prices. We also guarantee a high level of contract management, quality of product and a seamless transition of supply.

*Crafted by Surridge*

SURRIDGE





YOUR KIT - YOUR COLOURS - YOUR WAY - YOUR BRAND

Create your own  
**BESPOKE  
TRAINING  
KIT**

Complement your  
sports kit with our wide range  
of bespoke training wear items

- » HOODIES
- » TEK PANTS
- » PERFORMANCE TOPS
- » LEGGINGS
- » T-SHIRTS
- » SHORTS
- » RAIN JACKETS
- » WALKOUT TOPS

*Crafted by Surridge*



For more details scan the QR code opposite or visit  
[www.surridgesport.com/kitbuilder](http://www.surridgesport.com/kitbuilder)



*Crafted by Surridge*

UNLIMITED RANGE  
OF DESIGNS AND  
COLOUR OPTIONS  
AVAILABLE

WHITE LABEL

• Premium Quality •  
• Great Price • Your Brand •



*Crafted by Surridge*

YOUR KIT - YOUR WAY



Available in  
Mens and Ladies Fits

Red



Reverse

Dual Trim Colour Options



Dual Trim  
Designs:

Dual Dots

Diagonal Stripe

## NEW! Impact T-Shirt DU382

- » 86% Polyester, 14% Spandex
- » Lightweight, performance enhancing fabric for premium comfort while training
- » Embossed design detail for increased durability and longevity
- » Specially designed construction to allow for optimum movement
- » Mesh under arm panels provide fast drying and ultimate cooling
- » Create your own look with unlimited print design options
- » Fabric weight: 180gsm

### Unisex Sizes

SJ S M L XL XXL XXXL

XXXXL XXXXXL

### Ladies Sizes

XS S M L

NEW!

Dual Stripe  
design also  
available



Black

Royal

Navy

Available in  
Mens and Ladies Fits

Black



Dual Trim Colour Options



Dual Trim  
Designs:

Dual Dots

Diagonal Stripe

## NEW! Impact 1/4 Zip Performance Top DU383

- » 95% Polyester, 5% Spandex
- » Lightweight and breathable whilst providing warmth and comfort
- » Embossed design detail for increased durability and longevity
- » Fast wicking and quick drying fabric offering premium moisture management to keep you warmer for longer
- » Specially designed construction to allow for optimum movement
- » Extendable thumbholes for extra comfort and warmth
- » Adjustable draw cords in the hem for a perfect fit
- » Create your own look with unlimited print design options
- » Fabric weight: 220gsm

### Unisex Sizes

SJ S M L XL XXL XXXL

XXXXL XXXXXL

### Ladies Sizes

XS S M L

NEW!

Dual Stripe  
design also  
available



Royal

Navy

Red

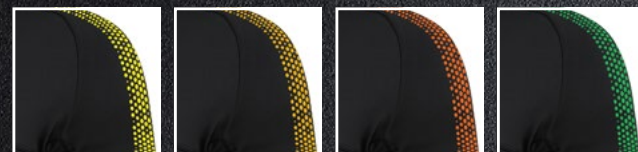


# DUAL FUSE

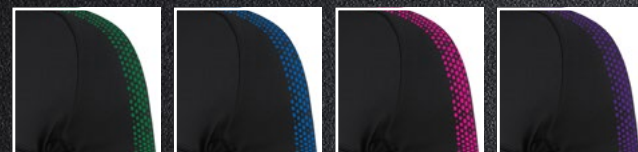
TRAINING RANGE RANGE

## YOUR COLOURS YOUR WAY

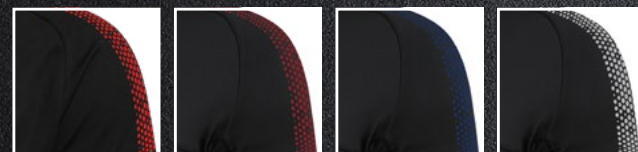
Our entire Dual & Fuse Ranges are available in 17 SS colours or choose unbranded - without SS branding



Yellow Amber Orange Emerald



Bottle Royal Pink Purple



Red Maroon Navy Silver



Sky Black Jade Gold

### Trim Colour Options



Trim Designs: Dots Diagonal Stripe

Black  
White  
Mens Fit

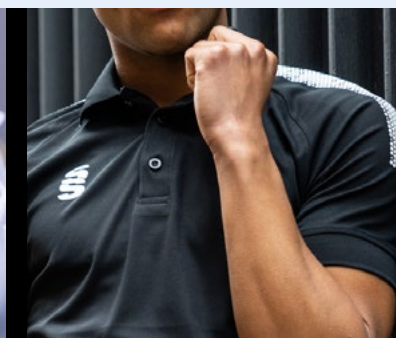
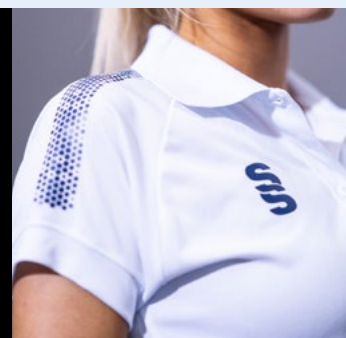


ADD YOUR BRAND!  
INTERNAL SURRIDGE BRANDING  
ONLY.  
BACK NECK TAPES AND SIZE LABELS ARE  
SS BRANDED

Navy  
White  
Ladies Fit



Trims = Dots and Diagonal Stripe

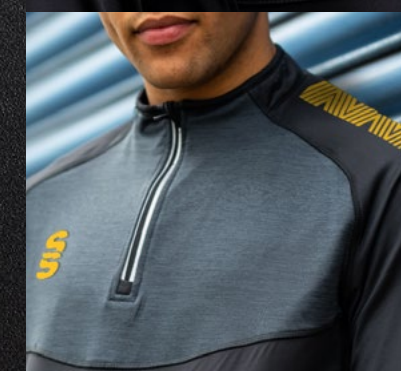
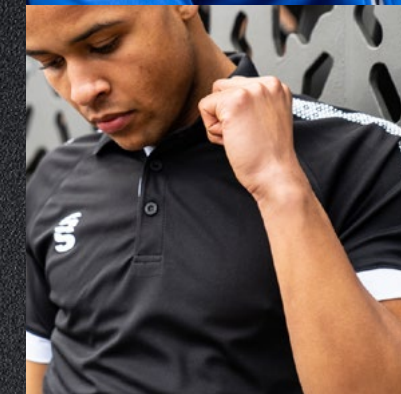


# DUAL FUSE

TRAINING RANGE RANGE



We can also produce a bespoke Dual or Fuse Trim with a minimum of 100 prints (50 garments)







White

Navy



Black

Royal

Red



ADD YOUR BRAND!  
INTERNAL SURRIDGE BRANDING  
ONLY.  
BACK NECK TAPES AND SIZE LABELS ARE  
SS BRANDED

**NEW!**  
Dual Stripe  
design also  
available



## Dual Polo DU018

- » Performance Polyester pique fabric with contoured underarm side panel in a breathable reverse pique fabric
- » Placket neck collar and colour contrast Dual print on both shoulders
- » Branded **VAPADRI™** neck tape
- » Choice of SS and Dual Print colours to suit your branding

### Unisex Sizes

SJ MJ LJ YTH  
S M L XL XXL XXXL XXXXL XXXXXL

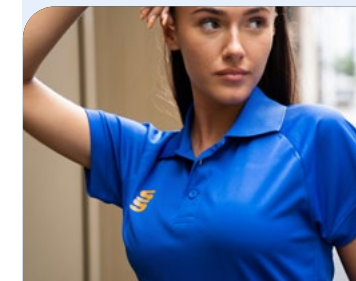
### Ladies Sizes (with a slight capped sleeve)

4/6 (XSmall) 8/10 (Small) 12/14 (Medium) 16/18 (Large)

### Dual Trim Colour Options



**Dual Trim  
Designs:**



**DUAL**  
TRAINING RANGE



ADD YOUR BRAND!  
INTERNAL SURRIDGE BRANDING  
ONLY.  
BACK NECK TAPES AND SIZE LABELS ARE  
SS BRANDED



Black

Navy

Fuse Trim Colour Options

--	--	--	--	--	--	--	--	--	--	--	--	--

Fuse Trim Designs:

--	--

# Fuse Polo Shirt

DU366

- » Performance Polyester pique, 3 button placket with 1x1 polyester rib collar
- » Forward position side seams with contrast insert
- » Contrast back yoke
- » French seam shoulder construction for comfort and durability
- » Forward side seams with contrasting coloured insert
- » Printed SS Logo to chest
- » Fabric weight: 150gsm

Unisex Sizes

SJ MJ LJ YTH  
S M L XL XXL XXXL

**NEW!**  
Fuse Stripe  
design also  
available



**FUSE**  
RANGE



Contrast Back  
Yoke with SS

# Blade Polo Shirt

SUR366

- » Performance Polyester pique
- » 3 button placket with 1x1 polyester rib collar
- » Forward position side seams with contrast insert
- » Contrast back yoke with embroidered SS logo
- » French seam shoulder construction for comfort and durability
- » Forward side seams with contrasting coloured insert
- » Embroidered Surridge logo to chest
- » Fabric weight: 150gsm

Unisex Sizes

SJ MJ LJ YTH  
S M L XL XXL

Colours

Shirt/Sleeve/Side Seam




**BLADE**  
TRAINING RANGE



Royal  
Marl



ADD YOUR BRAND!  
INTERNAL SURRIDGE BRANDING  
ONLY.  
BACK NECK TAPES AND SIZE LABELS ARE  
SS BRANDED

**NEW!**  
Dual Stripe  
design also  
available



#### Dual Trim Colour Options



Dual Trim  
Designs:

Dual Dots



Diagonal Stripe



## Dual Performance Top DU013

- » Made from melange Pro-Polyester with a lightly brushed feel and soft inner fleece lining
- » Subtle marl printed body
- » 1/4 Zip neck detail for breathability
- » Dual print on both shoulders and reflective zip detailing
- » Choice of SS and Dual Print colours to suit your branding

#### Unisex Sizes

SJ MJ LJ YTH

S M L XL XXL XXXL XXXXL XXXXXL



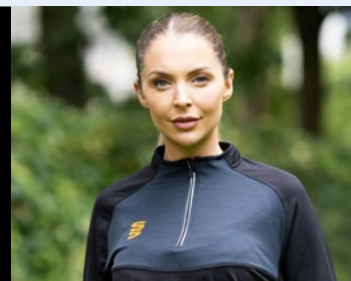
Black Marl



Grey Marl



Navy Marl



**DUAL**  
TRAINING RANGE

ADD YOUR BRAND!  
INTERNAL SURRIDGE BRANDING  
ONLY.  
BACK NECK TAPES AND SIZE LABELS ARE  
SS BRANDED



Black



Navy

## Fuse ¼ Zip Performance Top DU368

- » Made from heavy brushed french terry material to give warmth and comfort
- » 1/4 Zip neck detail for breathability
- » Dual print on both shoulders and reflective zip detailing
- » Personalise the Fuse range with SS logo colour to match the chosen Dual Print
- » Printed SS logo to chest
- » Fabric weight: 275gsm

#### Unisex Sizes

SJ MJ LJ YTH S M L XL

XXL XXXL XXXXL XXXXXL

#### Also available in

XXSJ (3-4yrs) XSJ (5-6yrs)

**NEW!**  
Fuse Stripe  
design also  
available



#### Fuse Trim Colour Options

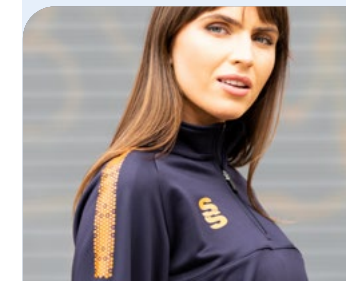


Fuse Trim  
Designs:

Dots



Diagonal Stripe



**FUSE**  
RANGE





## Blade Performance Top SUR368

- » Performance Polyester French Terry material
- » Contrast chest panel and contrast back panel
- » Half Zip with SS performance locking rubber zip toggle
- » French seam shoulder construction for comfort and durability
- » Forward side seams with contrasting colour insert
- » Embroidered Surridge logo to chest
- » Fabric Weight: 250gsm

### Unisex Sizes

SJ MJ LJ YTH  
S M L XL XXL

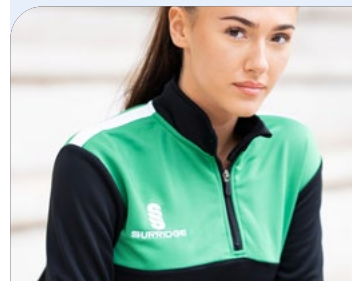


Contrast Back Yoke with SS

### Colours

Top/Chest/Side Seam

	Black Amber White		Black Orange White		Black Red White		Black Purple White		Black Emerald White
	Navy Bottle Amber		Navy Royal Amber		Navy Royal White		Navy Sky White		Navy Maroon White
	Navy Red White		Navy Emerald White						



**BLADE**  
TRAINING RANGE

Maroon



## Active ¼ Zip Maroon Performance Top WL001

- » Made from heavy brushed french terry material to give warmth and comfort
- » 1/4 Zip neck detail for breathability
- » Reflective zip detailing
- » Fabric weight: 275gsm

### Unisex Sizes

SJ MJ LJ YTH  
S M L XL XXL XXXL

### Also available in

XXSJ (3-4yrs) XSJ (5-6yrs)

WHITE LABEL

- Premium Quality •
- Great Price • Your Brand •

Available without SS branding and includes tear out label.

Maroon  
Reverse



Bottle



17 SS Colour Options







Navy

Black

#### Dual Trim Colour Options



Dual Trim  
Designs:

Dual Dots



Diagonal Stripe



## Camo Performance Top DU032

- » 275 gsm structured soft feel camo woven polyester material
- » Ultra modern fitted ¼ zip collar with fitted sleeves and binded sleeve hems
- » Adjustable draw cords in hem
- » Dual print on both shoulders and reflective zip detailing
- » SS printed to chest to match Dual Print colour

#### Unisex Sizes

SJ MJ LJ YTH

S M L XL XXL XXXL

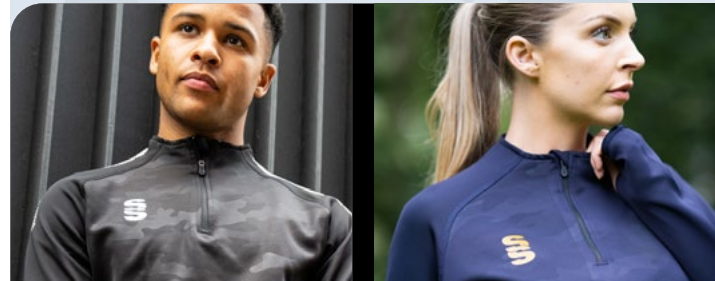
**NEW!**

Dual Stripe  
design also  
available



ADD YOUR BRAND!  
INTERNAL SURRIDGE BRANDING  
ONLY.

BACK NECK TAPES AND SIZE LABELS ARE  
SS BRANDED



**CAMO**  
RANGE



Black

Navy

#### Fuse Trim Colour Options



Fuse Trim  
Designs:

Dots



Diagonal Stripe



## Fuse Hoodie DU367

ADD YOUR BRAND!  
INTERNAL SURRIDGE BRANDING  
ONLY.

BACK NECK TAPES AND SIZE LABELS ARE  
SS BRANDED

- » Polyester and Cotton fabric blend
- » French seam shoulder construction for comfort and durability
- » Branded eyelets with tube draw cord
- » Large front hoodie pocket
- » Forward side seams with contrasting insert
- » Personalise the Fuse range with SS logo colour to match the chosen Dual Print
- » Printed SS logo to chest
- » Fabric Weight: 300gsm.

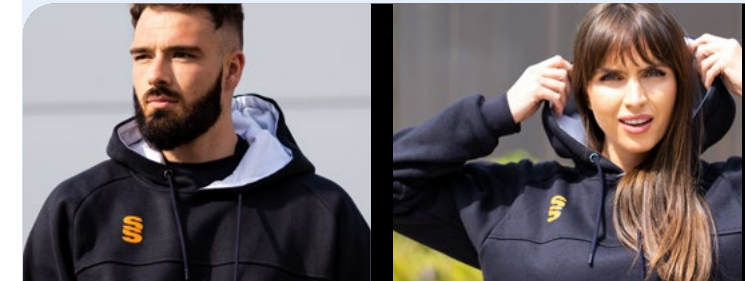
#### Unisex Sizes

SJ MJ LJ YTH

S M L XL XXL XXXL

**NEW!**

Fuse Stripe  
design also  
available



**FUSE**  
RANGE





Navy



Royal



ADD YOUR BRAND!  
INTERNAL SURRIDGE BRANDING  
ONLY.  
BACK NECK TAPES AND SIZE LABELS ARE  
SS BRANDED



Black (Female fit)



Grey

## Dual Zipped Hoodie DU012

- » 100% performance polyester and bonded fleece lining
- » Modern slim fit with toggles on hem for adjustable sizes
- » Full zip hoodie with reflective, water resistant zip detail
- » Two large zip pockets with soft fleece lining and elastic binding at sleeve ends
- » Toggle features to keep out the wind
- » French shoulder seam for comfort and dual print to shoulder
- » Choice of SS and Dual Print colours to suit your branding

### Unisex Sizes

SJ MJ LJ YTH  
S M L XL XXL XXXL  
XXXXL XXXXXL

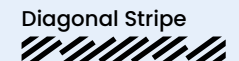
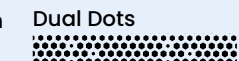
**NEW!**  
Dual Stripe  
design also  
available



### Dual Trim Colour Options



**Dual Trim  
Designs:**



**DUAL**  
TRAINING RANGE





## Blade Hoody SUR367

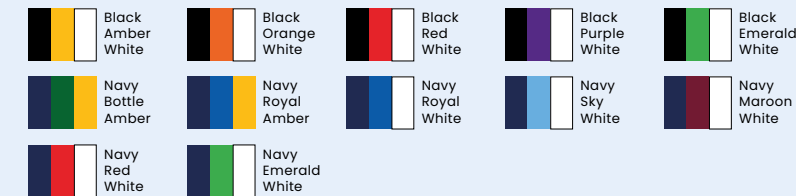
- » Polyester and Cotton fabric blend
- » Contrasting inner hood lining and chest panel
- » French seam shoulder construction for comfort and durability
- » Branded eyelets with tube draw cord
- » Large front hoodie pocket
- » Forward side seams with contrasting insert
- » Embroidered Surridge logo to chest
- » Fabric weight: 300gsm

### Unisex Sizes

SJ MJ LJ YTH  
S M L XL XXL

### Colours

Hoody/Chest/Side Seam



**BLADE**  
TRAINING RANGE

## Dual Active Short DU029

WHITE LABEL

- Premium Quality •
- Great Price • Your Brand •

- » Soft feel performance stretchy microfibre material
- » Half leg with poly/lycra inner
- » Now with longer inner pant to be lower than the short

### Unisex Sizes

XXS-UK 4, XS-UK 6, S-UK 8,  
M-UK 10, L-UK 12, XL-UK 14, XXL-UK 16



### 17 SS Colour Options



## Dual Short DU020

WHITE LABEL

- Premium Quality •
- Great Price • Your Brand •

- » Poly peached Micro-fibre blend with modern shorter leg length, more suited to gym and physical exercise
- » Elasticated hem with drawcord for flexibility and comfort

### Unisex Sizes

SJ MJ LJ YTH  
S M L XL XXL XXXL



Available without SS branding

### 17 SS Colour Options





# Pocket Training Ripstop Shorts

SUR331

- » Polyester Ripstop wind resistant fabric with 2 pockets
- » Embroidered Surridge logo to thigh
- » Fabric Weight: 115gsm

Unisex Sizes

SJ MJ LJ YTH  
S M L XL XXL

Ladies Sizes

8 10 12 14 16 18



# Blade Training Shorts

SUR370

- » 100% Polyester
- » 2 Pockets
- » Embroidered Surridge logo to thigh
- » Fabric Weight: 160gsm

Unisex Sizes

SJ MJ LJ YTH  
S M L XL XXL



# Fuse Shorts

SUR457

- » Performance Polyester
- » Matches to the Polo and T-Shirt in the same range
- » No pockets
- » Elasticated hem for comfort

Unisex Sizes

SJ MJ LJ YTH  
S M L XL XXL XXXL

Also available in

XXSJ (3-4yrs) XSJ (5-6yrs)



# Womens Dual Cycle Shorts

DU041

ADD YOUR BRAND!  
INTERNAL SURRIDGE BRANDING  
ONLY.  
BACK NECK TAPES AND SIZE LABELS ARE  
SS BRANDED

- » The Performance cycle shorts are made of fantastic comfortable 85% Polyester and 15% Elastane material
- » There is no grinning on the material when stretched
- » They feature two side pockets for mobile phones
- » Printed Surridge SS logo is situated on the left thigh

Ladies Sizes

7-8 9-10 11-12  
6 8 10 12 14 16 18



17 SS Colour Options





Create your own 3D effect, bespoke

# BADGES & APPLIQUÉS

Limitless possibilities for garment customisation. Silicone and TPU are just 2 of the options available.

YOUR KIT - YOUR COLOURS - YOUR WAY - YOUR BRAND



Minimum orders of 100 apply. 3-4 Week delivery.

*Crafted by Surridge*

SURRIDGESPORT.COM

[www.surridgesport.com/en/badges-applique](http://www.surridgesport.com/en/badges-applique)

**SS**  
EST. 1867



## Poplin Pant SUR381

WHITE LABEL

• Premium Quality •  
• Great Price • Your Brand •

- » Soft microfibre poplin outer
- » Straight leg traditional kit
- » Extra large ¾ side leg zip coming up to just below the pocket
- » Embroidered Surridge logo to left thigh
- » Soft cotton inner lining
- » Lycra gusset for flexibility
- » 2 zipped pockets
- » Mens and Ladies fits

### Unisex Sizes

SJ MJ LJ YTH

S M L XL XXL XXXL

### Ladies Sizes

8 10 12 14 16 18

Available without  
Surridge branding,  
code: **DU385**

Navy



Black



## Blade Slim Tek Pants SUR378

- » French Terry material with polyester lycra insert at calf
- » Two invisible zip pockets for security
- » Embroidered Surridge logo to thigh

### Unisex Sizes

SJ MJ LJ YTH

S M L XL XXL

Black



Navy





# Ripstop Track Pant

SUR375

- » Matte texture Ripstop-Polyester blend with mesh upper lining and Nylon Tafeta lower lining
- » Lycra gusset for flexibility and comfort with a drawcord
- » More modern slimmer leg fit from knee downwards
- » 12" side seam lower zip at hem

Available in  
Mens and Ladies Fits

Unisex Sizes

SJ MJ LJ YTH M L XL XXL

Ladies Sizes

8 10 12 14 16 18



# Performance Legging

DU028

- » 85% Polyester - 15% Elastane
- » 2 Side pockets for mobile and two smaller pockets (one with zip) for personal belongings
- » Printed Surridge logo to thigh
- » Available with and without SS logo
- » Dual print can be added for extra colour to calf

Ladies Sizes

7-8 9-10 11-12

8 10 12 14 16 18



Dual Trim Colour Options



Dual Trim  
Designs:

Dual Dots

Diagonal Stripe



WHITE LABEL

- Premium Quality •
- Great Price • Your Brand •

Available without SS branding

# Dual Slim Tek Pants

DU019

- » Interlock Polyester material with Polyester Lycra insert at calf
- » Two invisible zip pockets for security
- » Choice of SS and Dual Print colours to suit your branding

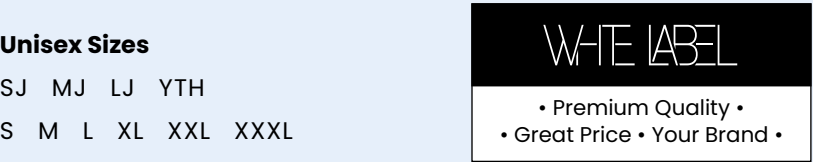
Unisex Sizes

SJ MJ LJ YTH

S M L XL XXL XXXL

Also available in

XXSJ (3-4yrs) XSJ (5-6yrs)



NEW!

Dual Stripe  
design also  
available



Dual Trim Colour Options



Dual Trim  
Designs:

Dual Dots

Diagonal Stripe



WHITE LABEL

- Premium Quality •
- Great Price • Your Brand •

Available without SS branding

Navy







Black

Navy

17 SS Colour Options



## NEW! Dual Elite ¼ Zip Training Jacket DU381



- » Modern overhead rain jacket with hood
- » Hoody and body is lined in the same material which has a light brush for a little warmth
- » The arms are well fitted for a modern look
- » Both front pockets are over sized with the same brushed lining for extra warmth
- » The material is matt and waterproof

### Unisex Sizes

SJ MJ LJ YTH  
S M L XL XXL XXXL

WHITE LABEL

- Premium Quality •
- Great Price • Your Brand •

Available without SS branding and includes tear out label.



SS  
EST. 1867



Navy

17 SS Colour Options



## Dual Training Jacket DU002



- » Wax Coated outer shell, light and fully waterproof
- » Reflective, water resistant zip detail and 2 zip pockets
- » Mesh lined hood with adjustable toggles
- » Underarm vents to stay breathable but warm

### Unisex Sizes

SJ MJ LJ YTH  
S M L XL XXL XXXL  
XXXXL XXXXXL

WHITE LABEL

- Premium Quality •
- Great Price • Your Brand •

Available without SS branding

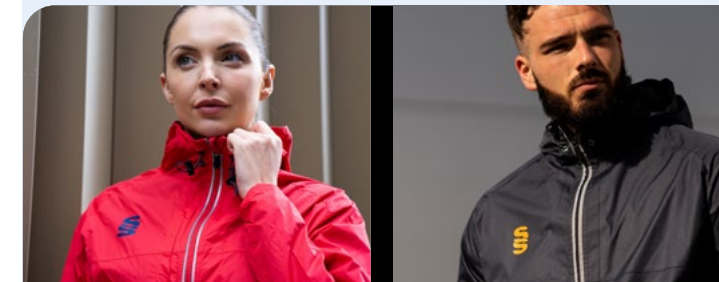


Maroon

Royal

Red

Black



SS  
EST. 1867





Black

## Dual Rain Jacket

DU003



- » Thick Wax Coated outer shell, rain-proof and soft fleece lined
- » Two zip pockets and placket zip cover on body and pockets
- » Taped seams so fully waterproof

### Unisex Sizes

SJ MJ LJ YTH  
S M L XL XXL XXXL  
XXXXL XXXXXL



Navy

WHITE LABEL

- Premium Quality •
- Great Price • Your Brand •

Available without SS branding



17 SS Colour Options



Navy

## NEW! Dual Puffer Jacket

DU181



- » A cosy, highly fashionable, fitted and soft to touch down feel jacket with hand filled poly wadding for superior warmth
- » StormDri water repellent rip stop micro peach outer
- » The perfect lightweight jacket for cold and damp winter days

### Mens Sizes

S M L XL XXL XXXL

### Ladies Sizes

XS S M L XL XXL



Ladies Back View  
Navy



Mens Back View  
Navy

ADD YOUR BRAND!  
INTERNAL SURRIDGE BRANDING  
ONLY.

BACK NECK TAPES AND SIZE LABELS ARE  
SS BRANDED



17 SS Colour Options







NEW! Fleece Robe  
WL002



- » Waterproof and windproof outer shell fabric made from 100% polyester
- » Super-warm synthetic lambswool lining made from 100% polyester
- » Tailored, fitted sleeves with hook and loop fasteners at the wrist
- » Full length 2-way reversible zip
- » Minimal sealed seam construction
- » Deep, lined external zip pockets
- » 'A5' size internal, soft-lined pocket
- » Internal waterproof zip entry pocket - ideal for phone/wallet
- » 2 inner zips for print and embroidery access
- » Zip to reverse for print and embroidery access

*Designed to let you get changed anywhere, whilst protecting you from the elements, Fleece Robe is an essential piece of kit for all outdoor activities. The long sleeve design provides extra warmth and is ideal for those waiting to compete or watching sporting events. The jacket can be used multiple times throughout the day, over wet kit, without the need for drying between uses.*

*Fleece Robe is one tough bit of kit. It's been designed and tested to stand the wear and tear of an active lifestyle, cold conditions and any challenge you face.*

Unisex Sizes  
XS/S M/L XL/XXL

17 SS Colour Options



WHITE LABEL

- Premium Quality •
- Great Price • Your Brand •

Available without SS branding and includes tear out label.





WHITE LABEL

• Premium Quality •

• Great Price • Your Brand •

Available without SS branding and includes tear out label.

Black



Navy

Navy



17 SS Colour Options



NEW! Active Gilet

WL004



» Showerproof, breathable and windproof

» Soft elasticised armhole and hem

» Contrast underarm panelling made from heavy brushed french terry material

» Full front zip with chin guard

» Two zip-closing pockets

» Comfortable longer length

» 2 inner zips for print and embroidery access

Unisex Sizes

YTH S M L XL XXL XXXL XXXXL XXXXXL

Navy Reverse



Black Reverse









EST. 1867

NEW! Active Padded Jacket

WL003



» 100% Polyester showerproof material

» Wind resistant with padded lining

» 2 side zipped pockets

» Sleeves have inner elasticated cuffs

» Inner zip pocket

» 2 inner zips for print and embroidery access

Zip to reverse for print and embroidery access

Unisex Sizes

SJ S M L XL XXL XXXL XXXXL XXXXXL

Black Reverse



Navy Reverse



17 SS Colour Options



WHITE LABEL

• Premium Quality •

• Great Price • Your Brand •

Available without SS branding and includes tear out label.

Black



Tear out label

Navy





**NEW! Active Long  
Padded Jacket** WL005



- » 100% Polyester showerproof material
- » Wind resistant with padded lining
- » 2 side zipped chest pockets
- » 2 inner zips for print and embroidery access
- » Zip to reverse for print and embroidery access
- » Double ended front zip allows for comfort while seated

**Unisex Sizes**  
YTH S M L XL XXL XXXL XXXXL XXXXXL



Black  
Reverse



Navy  
Reverse



Black

Navy

WHITE LABEL  
• Premium Quality •  
• Great Price • Your Brand •

Available without SS branding and includes tear out label.

**Supersoft  
Padded Jacket** R233



- » Showerproof and Windproof
- » Hinged locker patch in neck for self-branding, soft bound cuff and hem, contrast lining and trim
- » Reflective hip detail with integral hood, full front zip
- » Zip pockets and hangtag
- » Solid colours ideal for schoolwear, easy to pack, super soft, lightweight and warm

**Mens Sizes**

S M L XL XXL XXXL

**Ladies Sizes**

XS S M L XL XXL

**Ages**

2/3 3/4 5/6 7/8  
9/10 11/12 13/14



Black



Navy





# Holkham Down Feel Jacket R181



- » A cosy, highly fashionable, fitted and soft to touch down feel jacket with hand filled poly wadding for superior warmth
- » StormDri water repellent rip stop micro peach outer
- » The perfect lightweight jacket for cold and damp winter days



## Mens Sizes

S M L XL XXL XXXL

## Ladies Sizes

XS S M L XL XXL

Black

Navy

17 SS Colour Options



# Core Nova Lux Padded Gilet R223



- » Great cold weather protection
- » Super warmth without any weight
- » The Nova Lux padded bodywarmer offers comfort and style, the perfect layering gilet



## Unisex Sizes

XS S M L

XL XXL XXXL

Black

Navy

17 SS Colour Options



Mens Fit  
Black

Ladies Fit  
Navy

17 SS Colour Options



# Ice Bird Padded Gilet R193



- » The gilet version of the modern classic design
- » This super lightweight and perfectly tailored contemporary gilet offers amazing warmth without weight from it's super air-soft handle and hand filled polyester wadding

## Mens Sizes

S M L XL XXL

## Ladies Sizes

XS S M L XL XXL



Orange

Frost Grey

Royal



SS  
EST. 1867



# Dual Long Sleeve Baselayer DU034

- » Baselayers are tight fitting garments which help stabilize muscles to help improve performance
- » SS logo available in 17 SS colours

Unisex Sizes  
SJ MJ LJ YTH S M L XL XXL



# Dual Baselayer Legging DU040

- » Baselayers are tight fitting garments which help stabilize muscles to help improve performance
- » SS logo available in 17 SS colours

Unisex Sizes  
SJ MJ LJ YTH  
S M L XL XXL

WHITE LABEL

• Premium Quality •  
• Great Price • Your Brand •

Applies to all items on this page.

Navy  
Available without SS branding



# Dual Baselayer Short DU035

- » Baselayers are tight fitting garments which help stabilize muscles to help improve performance
- » SS logo available in 17 SS colours

Unisex Sizes  
SJ MJ LJ YTH  
S M L XL XXL

Navy  
Available without SS branding



# Surridge Quarter Sock SUR480

- » A modern quarter sock made with Acrylic, a cotton sole for extra comfort
- » Printed gripper on the sole for extra grip
- » A perfect pair of socks for playing football, rugby or gym wear
- » Minimum order of 300pcs

Unisex Sizes  
3-6 7-11

Bespoke Badge Option:  
You can replace the SS logo with your own School Crest for a more bespoke look. Grippers will also match to School Crest.





# Baseball Cap

SUR421

- » Classic fitted cap with comfortable five panel design
- » Eyelet mesh back panels for improved air flow & ventilation
- » Interior woven tape reinforcement for strength & durability
- » Adjustable tab at the back with hook & loop closure for custom fitting
- » Embroidered SS logo in white to left side of cap

**Size**  
One Size



**Colours**  
Classic Baseball Cap

Bottle

Maroon

Navy

Royal

Emerald

Black

NEW!

# Fuse Flexi Cap

SUR470

- » The Fuse Flexi cap is a modern shaped cap, lighter, sleeker, smarter and more comfortable
- » Its 6 panels are well finished, combining a lightweight visor fabrication and new three-layer multifunction sweatband
- » Inner sweatband and elastic fitting gives the most comfortable fit there is

**Unisex Sizes**  
S/M L/XL



**Colours**  
Fuse Flexi Cap

Navy

Maroon

Black

NEW!

# Dual Bucket Hat

DU507

- » 100% Polyester Drill Material
- » Any design is possible (we can match to any design)
- » Stock range also available (details on request)
- » Minimum order of 50pcs

**Unisex Sizes**  
S/M L/XL

**Bespoke Badge Option:**  
Add your Club Badge in full colour

**WHITE LABEL**  
• Premium Quality •  
• Great Price • Your Brand •

Available without branding



**Stock Colours**  
Royal, Red, Navy or Black

Royal

Red

Navy

Black

This item is fully bespoke, for details visit:  
[www.surridgesport.com/en/kitbuilder](http://www.surridgesport.com/en/kitbuilder) or scan the QR code above.

# Dual Hijab

DU030

- » Lightweight performance polyester material
- » Highly breathable and very cool to wear
- » SS print on right hand side

**Bespoke Badge Option:**  
Add your Club Badge in full colour

**Ladies Sizes**  
XS/S M/L



**17 SS Colour Options**

1

2

3

4

5

6

7

8

9

10

11

12

13

14

15

16

17




# Snowstar Beanie BC450


- » 100% Soft-touch acrylic
- » Dual style – cuffed or slouch
- » Two-tone pom pom
- » Double-layer knit
- » Ribbed cuff
- » Hand wash only

Size

One Size

**Bespoke Option:**  
Scan the QR code below  
or visit [www.surridgesport.com/kitbuilder](http://www.surridgesport.com/kitbuilder)





NEW!

# Bobble Hat



- » 100% Acrylic
- » Logo can be woven in, embroidered or a woven badge can be applique
- » Prices vary on qty and logo application
- » Min 50 for simple designs

Sizes

One Size



**FULLY BESPOKE**  
Create your own unique Bobble Hat

Available with or without Bobble



Scan the QR code above or visit:  
[www.surridgesport.com/en/kit-builder#/products/beanie](http://www.surridgesport.com/en/kit-builder#/products/beanie)

NEW!

# Scrunchies

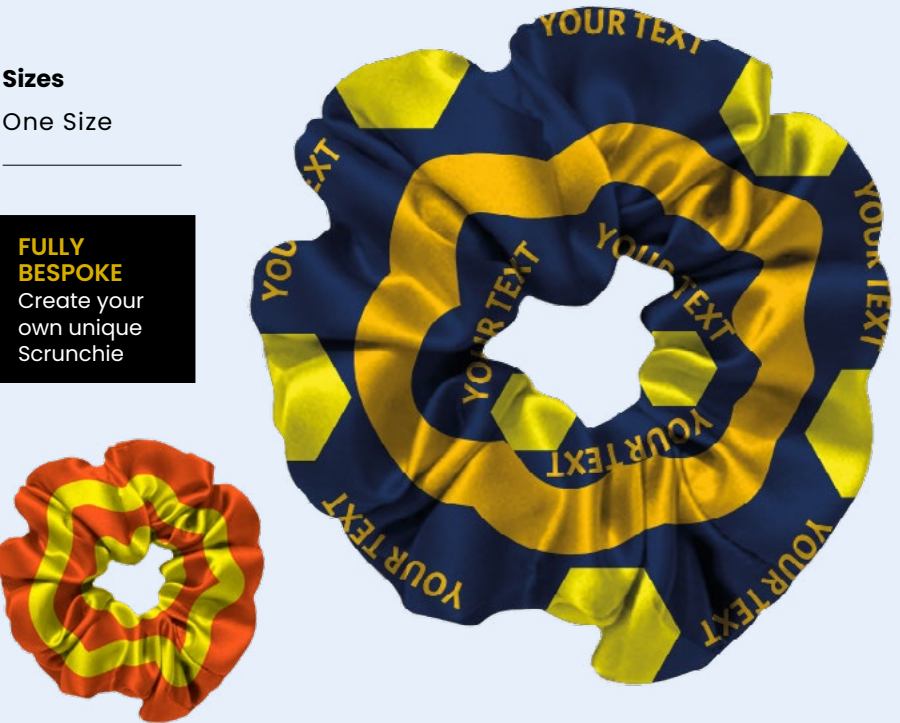


- » Min Order of 100pcs.
- » 4-6 Weeks Production One Size
- » 100 @ £4.00 each (prices are ex vat and carriage)

Sizes

One Size

**FULLY BESPOKE**  
Create your own unique Scrunchie



Scan the QR code above or visit:  
[www.surridgesport.com/en/kitbuilder#/products/scrunchies](http://www.surridgesport.com/en/kitbuilder#/products/scrunchies)



NEW &  
IMPROVED!

# Dual Backpack

DU004

- » Over shoulder quality backpack made of polyester material
- » Boot compartment and mesh panel drink compartment
- » Reinforced shoulder straps plus chest strap
- » Cushioned straps and handles
- » Internal laptop compartment

Size: 50cm x 38cm

WHITE LABEL

• Premium Quality •

• Great Price • Your Brand •



# Small Holdall

SUR364

- » Stylish Holdall with plenty of space and includes wet compartment
- » 100% modern nylon with 2 end pockets

Size  
64cm x 27cm x 30cm





## NEW Water Bottle with Straw (600ml) DU045

Black/White or Blue/White

Water Bottle with time markings, Motivational Drink Bottles Leakproof and BPA-free (Blue).

**Motivational Quote & Time Marker:** Our bottles are featured with a frosted and translucent appearance helps you measure your daily water intake. This sport bottle with unique inspirational quotes and time markings will always remind you to take in the right amount of water to keep you hydrated throughout the day. Perfect for the gym, yoga, runners, travel, hiking, cycling, camping, school and office use.

**BPA Free & Premium Material:** This 600ml sports water bottle is great for both kids and adults, which is BPA-free, made of food-grade and safe Tritan material. Thickened water bottles body and anti slip canteen surface purpose to protect the bottle from falling and breakage.

**100% Leakproof:** The water bottle is equipped with a durable wrist strap and a Leak-proof seal inside the lid. It is 100% leakproof, durable and impact-resistant, making it easy to carry around and convenient for on-the-go hydration. And a safety lock prevents accidents from opening the lid.

**One Hand Opened:** Simply open with one hand by clicking the button on the lid, which is more convenient and quicker. The soft durable silicone nozzle make you enjoy spill-proof sipping. The 600ML capacity of the water bottle is easy to carry and lightweight.

**Easy Cleaning:** For best results we recommend hand wash, but it also can be dishwasher safe. Comes with 1 pcs bottle brush and straw brush to make cleaning easy and quick. A wide mouth makes cleaning and filling fruits & ice cubes easier.



## NEW! Vacuum Stainless Steel Bottle (500ml) DU046

- » Vacuum insulated stainless steel bottle with an iconic design
- » The insulated 18/8 stainless steel keeps drinks hot or cold for several hours
- » Tested and approved under Food Safe Legislation (LFGB), and tested for phthalates content according to REACH regulations
- » Featuring a base that fits in most cup holders
- » Volume capacity is 500ml
- » Presented in a recycled cardboard gift box
- » Drinking bottle in RPET with rubberised finish (frosted transparent) and stainless steel cap with inner RPET lid and silicone ring
- » BPA free. Leak-free

**Bespoke Badge Option:**  
Add your Club Badge  
in full colour.

**SS**  
EST. 1867

White



Black



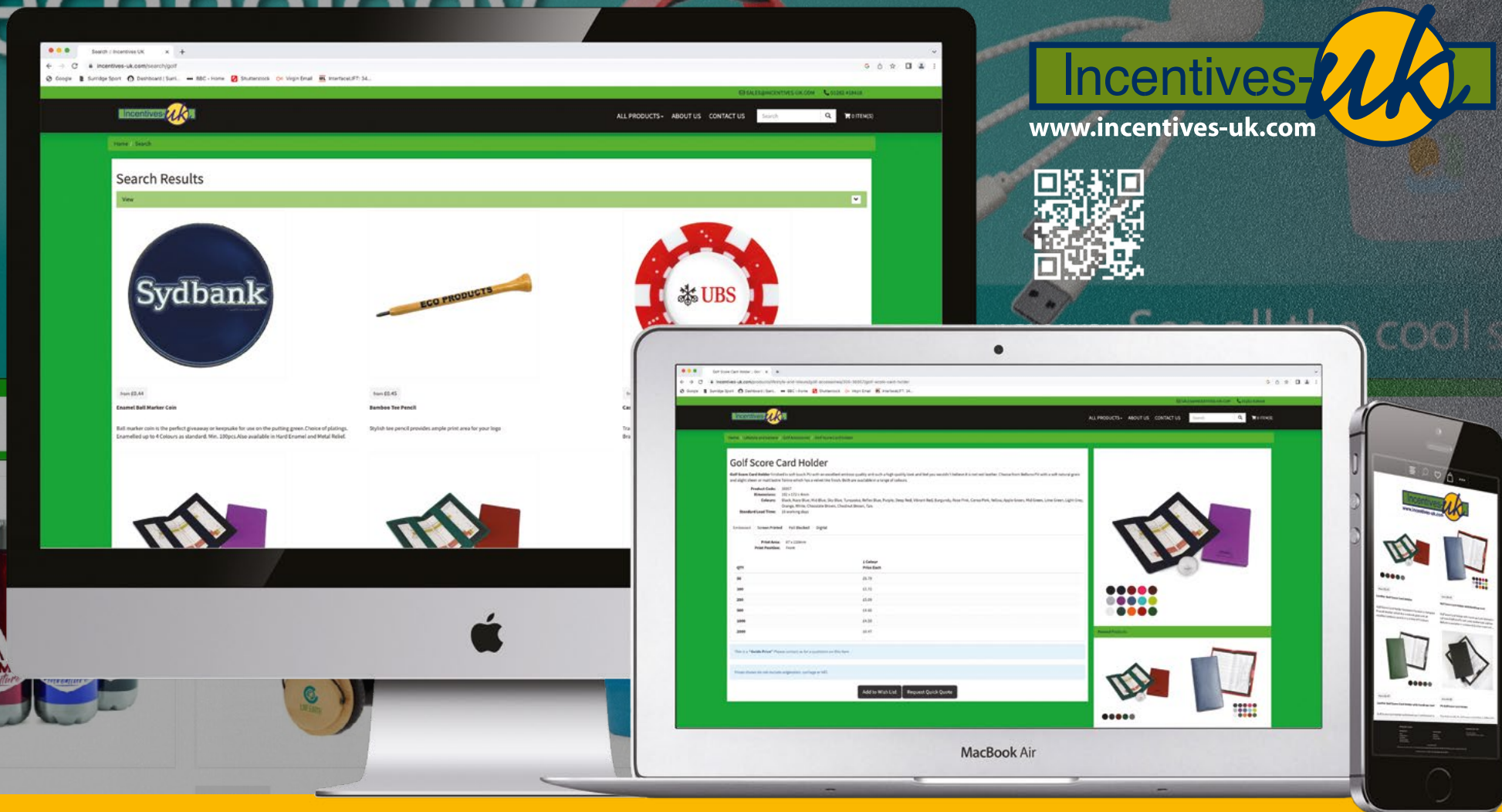
Iconic  
Design Double  
Wall Stainless  
Steel Bottle



# Incentives-uk

Golf accessories, bespoke promotional materials, plus much, much more...

Incentives-uk  
www.incentives-uk.com



tel: 01282 418 418 email: sales@incentives-uk.com

SDL Group Ltd, t/a Incentives-UK, Britannia Centre, Network 65 Business Park, Bentley Wood Way, Burnley, Lancashire. BB11 5ST.

## Golf Score Card Holder

Product Code: 36957

- » Finished in soft touch PU with an excellent emboss quality and such a high quality look and feel you wouldn't believe it is not real leather.
- » Choose from Belluno PU with a soft natural grain and slight sheen or matt lustre Torino which has a velvet like finish.
- » Both are available in a range of colours.

### Dimensions

102 x 172 x 4mm



### Colours

Score Card Holder



Black, Navy Blue, Mid Blue, Sky Blue, Turquoise, Reflex Blue, Purple, Deep Red, Vibrant Red, Burgundy, Rose Pink, Cerise Pink, Yellow, Apple Green, Mid Green, Lime Green, Light Grey, Orange, White, Chocolate Brown, Chestnut Brown, Tan

## Vegas Poker Chip Dome Markers

Product Code: 18107

- » Plastic Poker chip style ball marker with a removable magnetic ball marker, available in eight bright colours.
- » Marked subtly with the Asbri brand name .x000D\_.x000D\_

### Dimensions

40mm Diameter



### Colours

Poker Chip Marker

Black, Blue, Green, Orange, Pink, Red, Sky Blue, Yellow



# Divot Tool with Ball Marker

Product Code: 27811

- » Nickel Plated
- » Premium quality divot repair tool with polished Nickel plating. Complete with domed magnetic ball marker.
- » Full Colour Print. Min. 25pcs.

**Dimensions**  
24mm Diameter



# Virginia Hinge Box

Product Code: 18133

- » One silver metal fork and one silver metal ball marker both printed to your design with three plain 54mm white wooden tees in a hinge box.

**Dimensions**  
98 x 75 x 20mm



**Colours**  
Hinge Box  
  
Silver Fork, Silver Marker  
and 3 Plain White Tees

# Pro-Brella FG Vented Umbrella

Product Code: 08002

- » Stormproof golf umbrella with 16mm diameter fibreglass shaft.
- » Polyester canopy and tie wrap and special twin polyester canopy with air vent.
- » Matching polyester sleeve.

**Dimensions**  
750mm



**Colours**  
Score Card Holder  
  
Black, Navy, Navy/White, Royal/White,  
Scarlet/White or Black/White



# Turnberry Tri-fold Towel

Product Code: 25911

- » Top quality 100% cotton, 500 gram luxury tri-fold velour golf towel, embroidered to your design, up to 10,000 stitches, with a carabiner clip for attachment to golf bag.

**Dimensions**  
500 x 130mm (folded)



**Colours**  
Tri-fold Towel  
  
Black, White, Navy Blue,  
Royal Blue, Dark Green and Red



# Create Your Own Club Webshop



## Completely Free

No additional charges for setting up your own club webshop.



## Easy Personalisation

Add optional extras such as print, embroidery, initials, names and numbers.



## Hassle Free

No need to collate team orders as everyone can order individually.



## Quick Lead Times

Stock items have a fast turnaround within 10 working days from order placement.

COMPLETELY  
**FREE**

Create your own webshop as a Trader and put them on your website.

**FOR FREE!**

## NEW TRADE PORTAL 2025

Improved styling, lots more facilities and functionality



EST. 1867

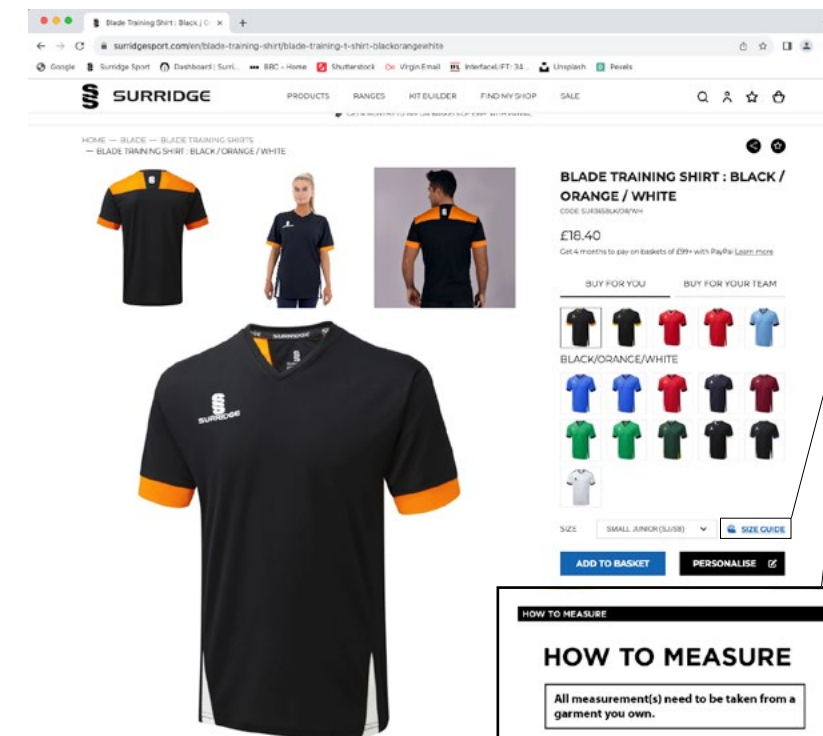
SURRIDGESPORT.COM

*Crafted by Surridge*

## SIZE GUIDES

All products requiring a size guide have their own individual guide and information on How To Measure on the chosen product web page (See example below)

1). Simply visit [www.surridgesport.com](http://www.surridgesport.com) or scan the QR Code bottom left



2). Select the chosen product, ie: Blade Training Shirt plus colour

3). Click on:

[SIZE GUIDE](#)

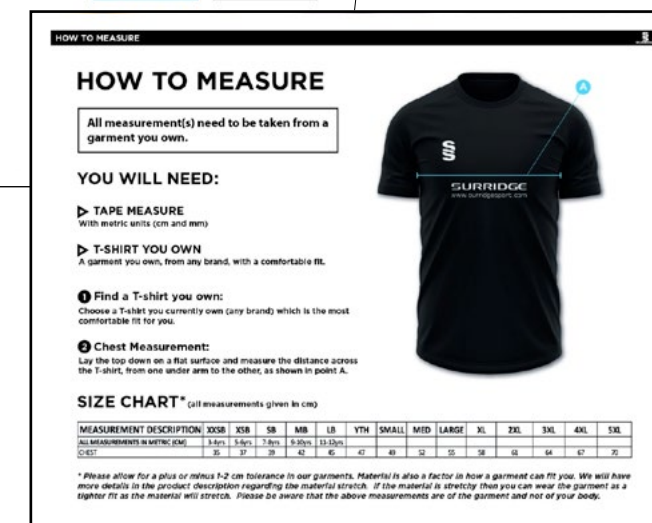
Which will then take you to the product size guide window shown below



Scan me from your device



EST. 1867



## WASHING INSTRUCTIONS

Surridge Sport garments are manufactured from top quality fabrics. All fabrics & logos undergo stringent quality tests to ensure durability and wash-ability. They will last for many years if properly cared for. When washing garments always refer to the instructions on the garment label.

### Playing Kits

First wash – Always wash shirts, shorts and socks inside out & separately to remove surface dye.

Avoid leaving kits folded or bundled together for any length of time whilst damp or soiled. Remove excess mud and wash as soon as possible after use to avoid stains from setting.

Garments may discolour due to staining by substances such as mud, grass, petroleum jelly etc, which may not entirely be removed by washing alone. Treat stains directly with a stain remover as soon as possible.

Take care not to use stain remover on transfers applied to the garment as this may effect the quality of the print. Some of the toughest stains may require more than one treatment.

- Do not over load the washing machine and always wash light and dark colours separately.
- Do not wash above the temperature stated on the garment label. (many items 30°C)
- Do not use fabric softener.
- If the garment can be tumble dried (see care label) always tumble dry cool.
- Never iron printed motifs

### Training Wear / Outer Wear

Dirt on outer wear (padded jacket, rain jacket, training jacket) should be wiped off with a damp cloth. These garments do not require regular washing as this will remove the shower proofing. If necessary wash inside out, no hotter than 30 degrees on a synthetic wash.

- Do not use fabric softener.
- Do not tumble dry.
- Never iron printed motifs.

Surridge Sport does not accept liability for discolouration or damage to garments due to incorrect laundering.



+44 (0) 1282 418 418



sales@surridgesport.com



SDL Group Ltd, Britannia Centre,  
Network 65 Business Park, Burnley, Lancashire, BB11 5ST



EST. 1867

*Crafted by Surridge*

S U R R I D G E S P O R T . C O M



All information within this catalogue was correct at the time of production and is subject to change without prior notice.

