



EST. 1867

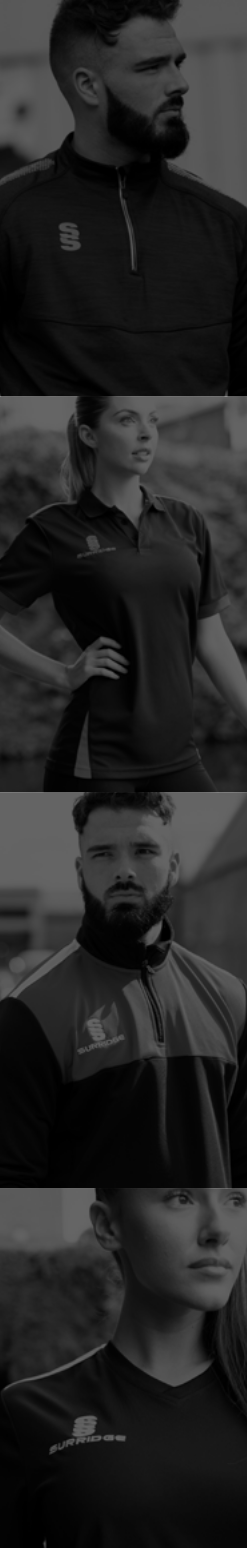
*Crafted by Surridge*

---

**PADEL  
TENNIS  
SPORTSWEAR**  
**Catalogue**

---





## Contents:

- » Company Background
- » Bespoke Kit Design
- » **NEW!** Impact Range
- » Dual Range
- » Camo Range
- » Fuse Range
- » Blade Range
- » Webshop
- » Size Guide

## NEW for 2025!

### WHITE LABEL

**Surridge is excited to be launching our very own WHITE LABEL range.**

This range will give you the opportunity to rebrand any of our **WHITE LABEL** products with your very own logos. Trust in our 150 years of experience to enhance your product offering to your customers.

**Premium Quality • Great Price • Your Brand**

**Look out for the logo throughout the catalogue.**



In 1867 Percy Stuart Surridge created a sports brand. He applied the principles of tradition and craft, with the concept of bringing innovation to improve performance, creating products defined by craftsmanship, originality and Britishness.

Today, we are a brand that not only connects with our markets and consumers but keeps with our origins and principles set over 150 years ago.

Surridge Sport head office, warehousing and production facilities are based in Burnley, Lancashire. The site has in house embroidery, manufacturing, print and embellishment facilities along with a dedicated design and product development team and a fully equipped distribution/customer service team. This allows Surridge the flexibility to manage and service its portfolio of accounts simply and efficiently, maintaining day to day fulfilment of orders as well as looking to make improvements and handle any quick turnaround of kit that may be required. Careful planning with account management shall ensure the organisation's needs will be prepared for in advance and progressed in an organised and agreed fashion.

The company is wholly family owned in the UK and is self-financed operating from our own custom built facilities in Lancashire of 60,000 sq ft. We will be happy to produce copies of our audited accounts to satisfy any due diligence procedures and we formally extend an open invite to any of your personnel to visit us at any time.

Surridge Sport uses factories in the Far-East for production of the proposed range. We have developed strong relationships with the suppliers and have worked with them for many years. We also have employees based in the factories to help manage the supply.

### Objective

Surridge Sport aim to supply you with a commercially attractive proposal and a high performance playing and training range at competitive prices. We also guarantee a high level of contract management, quality of product and a seamless transition of supply.

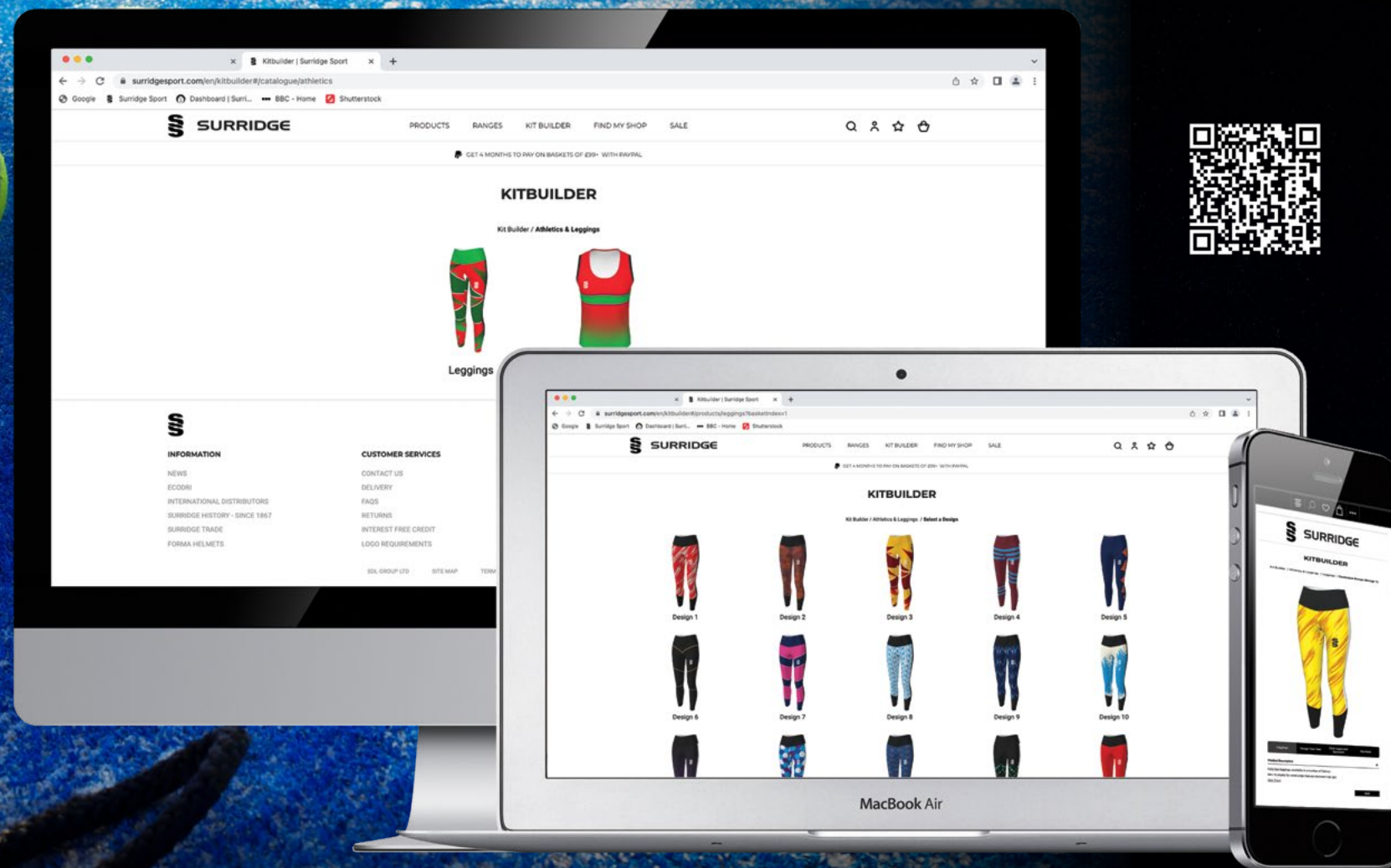
*Crafted by Surridge*

SURRIDGE



Create your own  
**BESPOKE KIT**  
Visit: [www.surridgesport.com](http://www.surridgesport.com)

LIMITLESS DESIGN  
AND COLOUR OPTIONS  
AVAILABLE



*Crafted by Surridge*

Male and Female fits available. Bespoke training wear ALSO AVAILABLE to match outfield for a more bespoke look. Compliment your design with our stock range of shorts and socks. For more details visit our website [www.surridgesport.com/kitbuilder](http://www.surridgesport.com/kitbuilder) or scan the QR code above.



Create your own  
**BESPOKE VESTS**  
Visit: [www.surridgesport.com](http://www.surridgesport.com)



LIMITLESS DESIGN  
AND COLOUR OPTIONS  
AVAILABLE



*Crafted by Surridge*

Add your Club Badge, Team Logo's,  
Names, Numbers and Sponsors

Male and Female fits available. Bespoke training wear ALSO AVAILABLE to match outfield for a more bespoke look. Compliment your design with our stock range of shorts and socks. For more details visit our website [www.surridgesport.com/kitbuilder](http://www.surridgesport.com/kitbuilder) or scan the QR code above.





# VESTS & SHORTS

Visit: [www.surridgesport.com](http://www.surridgesport.com)



Add your Club Badge, Team Logo's,  
Names, Numbers and Sponsors



*Crafted by Surridge*

LIMITLESS DESIGN  
AND COLOUR OPTIONS  
AVAILABLE

Male and Female fits available. Bespoke training wear ALSO AVAILABLE to match outfield for a more bespoke look. Compliment your design with our stock range of shorts and socks. For more details visit our website [www.surridgesport.com/kitbuilder](http://www.surridgesport.com/kitbuilder) or scan the QR code above.



# VESTS & SHORTS

Visit: [www.surridgesport.com](http://www.surridgesport.com)



LIMITLESS DESIGN  
AND COLOUR OPTIONS  
AVAILABLE



*Crafted by Surridge*

Add your Club Badge, Team Logo's,  
Names, Numbers and Sponsors

Male and Female fits available. Bespoke training wear ALSO AVAILABLE to match outfield for a more bespoke look. Compliment your design with our stock range of shorts and socks. For more details visit our website [www.surridgesport.com/kitbuilder](http://www.surridgesport.com/kitbuilder) or scan the QR code above.





Create your own bespoke design

# CROPS & LEGGINGS

Visit: [www.surridgesport.com](http://www.surridgesport.com)



Add your Club Badge, Team Logo's,  
Names, Numbers and Sponsors



*Crafted by Surridge*

LIMITLESS DESIGN  
AND COLOUR OPTIONS  
AVAILABLE

Male and Female fits available. Bespoke training wear ALSO AVAILABLE to match outfield for a more bespoke look. Compliment your design with our stock range of shorts and socks. For more details visit our website [www.surridgesport.com/kitbuilder](http://www.surridgesport.com/kitbuilder) or scan the QR code above.



Create your own bespoke design

# CROPS & LEGGINGS

Visit: [www.surridgesport.com](http://www.surridgesport.com)



LIMITLESS DESIGN  
AND COLOUR OPTIONS  
AVAILABLE



*Crafted by Surridge*

Add your Club Badge, Team Logo's,  
Names, Numbers and Sponsors

Male and Female fits available. Bespoke training wear ALSO AVAILABLE to match outfield for a more bespoke look. Compliment your design with our stock range of shorts and socks. For more details visit our website [www.surridgesport.com/kitbuilder](http://www.surridgesport.com/kitbuilder) or scan the QR code above.





Create your own bespoke design

# STOCK RANGE KIT

Visit: [www.surridgesport.com](http://www.surridgesport.com)



Add your Club Badge, Team Logo's,  
Names, Numbers and Sponsors



*Crafted by Surridge*

LIMITLESS DESIGN  
AND COLOUR OPTIONS  
AVAILABLE

Compliment your design with our stock range of shorts and socks.  
For more details visit our website [www.surridgesport.com/kitbuilder](http://www.surridgesport.com/kitbuilder) or scan the QR Code above.



## EXCLUSIVE VAPADRI™ Technology Designed for Athletes

ECODRI is an exclusive range of materials made with VAPADRI™ technology for Surridge Sport and other major sports brands. EcoDri is a 100% recycled material that is used in the dye sublimated process for most playing garments. Surridge Sport can offer an EcoDri material for all playing garments.

EcoDri is made from 100% recycled polyester yarn, produced from water bottles. This process is managed through our own research and development with our material factories in the Far East. All the EcoDri material is made with VAPADRI™ technology, meaning that the performance of the material is still to the highest standards that we offer. The EcoDri material is still at a premium in price but we are convinced that our pricing is still the most competitive on the market against our competition.



## ECO DRI

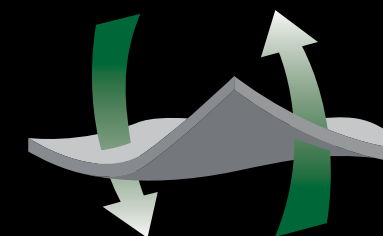
BY



THIS MATERIAL IS MADE FROM  
100% RECYCLED POLYESTER  
YARN, PRODUCED FROM  
RECYCLED WATER BOTTLES.



This performance fabric is designed for athletes. Garments made with VAPADRI™ technology can help the wearer stay "DRI" and as a result create zero distraction, allowing you to concentrate 100% on the game.



LIGHTWEIGHT



WICKING



BREATHABLE



ANTI-STATIC



MACHINE  
WASHABLE



FAST DRYING

SURRIDGE

SPORT





Create your own

# BESPOKE SPORTS KIT

With  
**60 SPORTS**  
to choose from, including:

- » CRICKET
- » FOOTBALL
- » RUGBY
- » HOCKEY
- » NETBALL
- » ATHLETICS
- » BASKETBALL
- » ROWING

*Crafted by Surridge*

YOUR KIT - YOUR COLOURS - YOUR WAY - YOUR BRAND



American Football  
Athletics  
Archery  
Badminton  
Basketball  
Baseball  
Beach Volleyball  
Boccia  
Bowling  
Boxing  
Canoeing  
Cycling  
Darts  
Dodgeball  
Fencing  
Football  
Futsal  
Gaelic Football  
Golf  
Gymnastics  
Handball  
Hockey  
Judo  
Korfball  
Lacrosse  
Netball  
Olympic Weightlifting  
Rugby  
Sailing  
Shooting  
Softball  
Tennis  
Triathlon  
Volleyball  
Water Polo  
Wheelchair Basketball  
Winter Paralympic Sports  
Wrestling



For more details scan the QR code opposite or visit [www.surridgesport.com/kitbuilder](http://www.surridgesport.com/kitbuilder)  
Complement your design with our stock range of shorts and socks.



EST. 1867

*Crafted by Surridge*

UNLIMITED RANGE  
OF DESIGNS AND  
COLOUR OPTIONS  
AVAILABLE

WHITE LABEL

- Premium Quality •
- Great Price • Your Brand •



Choose from our range of  
**60 SPORTS!**





Create your own  
**BESPOKE  
TRAINING  
KIT**

Complement your  
sports kit with our wide range  
of bespoke training wear items

- » HOODIES
- » TEK PANTS
- » SKORTS
- » PERFORMANCE TOPS
- » LEGGINGS
- » T-SHIRTS
- » SHORTS
- » RAIN JACKETS
- » WALKOUT TOPS

*Crafted by Surridge*

YOUR KIT - YOUR COLOURS - YOUR WAY - YOUR BRAND



For more details scan the QR code opposite or visit [www.surridgesport.com/kitbuilder](http://www.surridgesport.com/kitbuilder)  
Complement your design with our stock range of shorts and socks.



EST. 1867

*Crafted by Surridge*

UNLIMITED RANGE  
OF DESIGNS AND  
COLOUR OPTIONS  
AVAILABLE

WHITE LABEL

• Premium Quality •  
• Great Price • Your Brand •



YOUR KIT - YOUR WAY



Available in  
Mens and Ladies Fits

Red



Reverse

Dual Trim Colour Options



Dual Trim  
Designs:

Dual Dots

Diagonal Stripe

## NEW! Impact T-Shirt DU382

- » 86% Polyester, 14% Spandex
- » Lightweight, performance enhancing fabric for premium comfort while training
- » Embossed design detail for increased durability and longevity
- » Specially designed construction to allow for optimum movement
- » Mesh under arm panels provide fast drying and ultimate cooling
- » Create your own look with unlimited print design options
- » Fabric weight: 180gsm

### Unisex Sizes

SJ S M L XL XXL XXXL

XXXXL XXXXXL

### Ladies Sizes

XS S M L

NEW!

Dual Stripe  
design also  
available



Black

Royal

Navy

Available in  
Mens and Ladies Fits

Black



Dual Trim Colour Options



Dual Trim  
Designs:

Dual Dots

Diagonal Stripe

## NEW! Impact 1/4 Zip Performance Top DU383

- » 95% Polyester, 5% Spandex
- » Lightweight and breathable whilst providing warmth and comfort
- » Embossed design detail for increased durability and longevity
- » Fast wicking and quick drying fabric offering premium moisture management to keep you warmer for longer
- » Specially designed construction to allow for optimum movement
- » Extendable thumbholes for extra comfort and warmth
- » Adjustable draw cords in the hem for a perfect fit
- » Create your own look with unlimited print design options
- » Fabric weight: 220gsm

### Unisex Sizes

SJ S M L XL XXL XXXL

XXXXL XXXXXL

### Ladies Sizes

XS S M L

NEW!

Dual Stripe  
design also  
available



Royal

Navy

Red





# Padel Tennis

Get your game on with our professional padel tennis range and **design your own** personal padel tennis kit.

Excel in your performance wearing something you can be proud of.

SS Logo available in 17 Colours

Items also available without SS Logo



EST. 1867

*Crafted by Surridge*

Printed SS logo to chest available in 17 colours

Also available  
**UNBRANDED**



Sapphire Blue



## Cool Vest JC007

- » 100% Polyester, made from a lightweight Neoteric™ fabric and with a sporty fit and curved back hem, this vest has been designed to keep you cool and comfortable whilst working up a sweat
- » Uncompromising in design simplicity this vest provides unrestricted performance in letting you push towards your goals
- » Fabric weight: 140gsm

**Sizes**  
\*XS 35/36" S 37"/39" M 39"/41" L 41"/43" XL 43"/45" 2XL 45"/48"  
\*XS only available in these colours

 <p>*Arctic White</p>	 <p>Bottle Green</p>	 <p>Charcoal</p>	 <p>Electric Green</p>	 <p>Electric Orange</p>	 <p>Electric Pink</p>
 <p>Electric Yellow</p>	 <p>*Fire Red</p>	 <p>Hot Pink</p>	 <p>Jade</p>	 <p>*Jet Black</p>	 <p>Kelly Green</p>
 <p>Purple</p>	 <p>*Royal Blue</p>	 <p>Sapphire Blue</p>	 <p>Sun Yellow</p>		



Printed SS  
logo to chest  
available in  
17 colours

Also available  
**UNBRANDED**

Electric Orange



## Women's Cool Vest JC015

- » 100% Polyester, uncompromising in design simplicity, this vest provides unrestricted performance
- » Crafted from a lightweight, Neoteric™ fabric to wick sweat away from the skin
- » The scoop neckline and racer back style ensure natural movement
- » Fabric weight: 140gsm

### Sizes

XS 8 S 10 M 12 L 14 XL 16 2XL\* 18 3XL† 20 4XL† 22

\*2XL, †3XL and †4XL only available in these colours



\*†Arctic White



Charcoal



Electric Green



Electric Orange



Electric Pink



Electric Yellow



Fire Red



\*French Navy



Hot Pink



\*†Jet Black



\*Purple



\*Royal Blue



Sapphire Blue

Printed SS  
logo to chest  
available in  
17 colours

Also available  
**UNBRANDED**

Jet Black



## Kids Cool Vest JC07J

- » 100% Polyester, sporty fit and bold in colour, the Kids cool vest is a gym kit essential
- » This vest has a sporty fit with a curved back hem for additional comfort and self-fabric binding around the neckline and armholes
- » Made from a lightweight Neoteric™ fabric to wick sweat away from the skin, it's the perfect vest for school sports
- » Fabric weight: 140gsm

### Sizes

XS 3/4 S 5/6 M 7/8 L 9/11 XL 12/13



Fire Red



Jet Black



Royal Blue



EST. 1867

*Crafted by Surridge*





Jade



Jade



## Women's Cool T JC005

- » 100% Polyester, this classic Cool T is cut to a feminine fit integrating form and function to unlock your fitness potential
- » Crafted from a lightweight Neoteric™ fabric to wick sweat away from your skin
- » With a self-fabric crew neck and cap sleeves, its non-restrictive design makes it an essential for your activewear wardrobe
- » Fabric weight: 140gsm

### Sizes

XS 8 S 10 M 12 L 14 XL 16 2XL\* 18 3XL† 20 4XL† 22

\*2XL, †3XL and †4XL only available in these colours



Jade



Hot Pink

Printed SS  
logo to chest  
available in  
17 colours

Also available  
**UNBRANDED**





Reflex Blue

Electric Pink



Printed SS  
logo to chest  
available in  
17 colours

Also available  
**UNBRANDED**

**SS**  
EST. 1867  
*Crafted by Surridge*

## Cool T JC001

- » 100% Polyester, the Cool T is understated yet high performing, allowing you to focus fully and unlock your potential
- » Crafted from a lightweight Neoteric™ fabric which wicks sweat away from the skin to ensure you stay cool and dry
- » With a crew neck and relaxed fit this t-shirt will take the heat off you whether you're working out or taking part in a charity run
- » Fabric weight: 140gsm

### Sizes

XS 35"/37" S 37"/39" M 39"/41" L 41"/43" XL 43"/45" 2XL 45"/48"

3XL\* 48"/50" 4XL† 51"/53" 5XL† 54/56"

\*3XL, †4XL and †5XL only available in these colours



Electric  
Pink

Sapphire  
Blue





Printed SS  
logo to chest  
available in  
17 colours

Also available  
**UNBRANDED**

Sapphire Blue



## Women's Long Sleeve Cool T JC012

- » 100% Polyester, the girlie long sleeve Cool T is the perfect transitional piece with feminine cut for added comfort
- » This set-in long sleeve design provides breathability thanks to the Neoteric™ fabric used
- » This top is a great option for making training on colder days that little bit easier
- » Fabric weight: 140gsm

### Sizes

XS 8 S 10 M 12 L 14 XL 16



Arctic White



Electric Yellow



Jet Black



*Crafted by Surridge*

Printed SS  
logo to chest  
available in  
17 colours

Also available  
**UNBRANDED**



Sapphire  
Blue



## Long Sleeve Cool T JC002

- » 100% Polyester, give all your training inside and out
- » The Long sleeve Cool T is the perfect transitional piece from season to season
- » Crafted from a lightweight Neoteric™ fabric it can be worn all year round
- » Fabric weight: 140gsm

### Sizes

S 37"/39" M 39"/41" L 41"/43" XL 43"/45" 2XL 45"/48"



Arctic White



Charcoal



Electric Green



Electric Orange



Electric Yellow



Fire Red



French Navy



Jet Black



Purple



Royal Blue



Sapphire Blue





Printed SS  
logo to chest  
available in  
17 colours

Also available  
**UNBRANDED**

Jet Black



## Women's Cool Contrast Zoodie JC058

- » Body: 89% Polyester, 11% Elastane
- » Contrast: 92% Polyester, 8% Elastane
- » Dual weight and supportive feminine fit
- » Cool contrast zoodie combines wicking performance with lightly brushed fabric on the body
- » Adjustable attached hood protects from the elements while the raglan sleeves and thumb holes offer great range of motion
- » Fabric weight: Contrast: 210gsm. Body: 240gsm

### Sizes

XS 8 S 10 M 12 L 14 XL 16



Black/Black Slate  
Melange



Black/Black Slate  
Melange Reverse



Grey/Grey  
Melange



Grey/Grey  
Melange Reverse



Jet Black



Jet Black Reverse



*Crafted by Surridge*

Printed SS  
logo to chest  
available in  
17 colours

Also available  
**UNBRANDED**



Jet Black/  
Arctic White



## Women's Cool ½ Zip Sweatshirt JC036

- » 87% Polyester, 13% Elastane
- » This ½ zip sweat is crafted from a CoolFit fabric that provides stretch for comfort and a great fit
- » The raglan sleeves create a great range of motion whilst the reflective detail keeps you safer in low light conditions
- » Fabric weight: 280gsm

### Sizes

XS 8 S 10 M 12 L 14 XL 16



Charcoal/  
Jet Black



Charcoal/  
Jet Black Reverse



French Navy/  
Arctic White



French Navy/  
Arctic White Reverse



Jet Black/  
Arctic White



Jet Black/  
Arctic White Reverse



Jet Black/  
Fire Red



Jet Black/  
Fire Red Reverse





Printed SS  
logo to chest  
available in  
17 colours

Also available  
**UNBRANDED**

Electric Pink

## Women's Cool Sports Crop Top JC017

- » 90% Nylon, 10% Elastane
- » Have the freedom to stay focused during your workout
- » This stretch fabric crop moves with your body, keeping you dry and comfortable to maximise your performance
- » This sports crop top gives you freedom of movement with a racer back design and elasticated hem
- » Fabric weight: 210gsm

### Sizes

XXS\* 6 XS 8 S 10 M 12 L 14 XL 16

\*XXS only available in these colours



Arctic White

Electric Pink

\*Jet Black



Printed SS  
logo to chest  
available in  
17 colours

Also available  
**UNBRANDED**

Digital  
Lavender

## Women's Recycled Tech Sports Bra JC217

- » 86% Recycled polyester, 14% Elastane
- » The women's recycled tech sports bra has four-way stretch for maximum comfort whilst not restricting movement
- » Incorporates sleek, fashion-forward design
- » The cups are removable and the straps adjustable, so it can reshape to your needs
- » Fabric weight: 140gsm

### Sizes

XS 8 S 10 M 12 L 14 XL 16 2XL\* 18 3XL\* 20 4XL\* 22

\*2XL, 3XL and 4XL only available in these colours



Digital Lavender

\*Jet Black



Printed SS  
logo to chest  
available in  
17 colours

Also available  
**UNBRANDED**

Jet Black



# Women's Cool Capri

JC086

- » 87% Polyester, 13% Spandex
- » Workout in style and get ready to exercise in these tight fitting ¾ length capris
- » Made from a CoolFit™ fabric with plenty of stretch for movement and flat seams to reduce irritation, these capris are a staple item for your workout wardrobe
- » Fabric weight: 280gsm

**Sizes**  
XS 8   S 10   M 12   L 14   XL 16



Jet Black (Front)                      (Back)

Printed SS  
logo to chest  
available in  
17 colours

Also available  
**UNBRANDED**



Jet Black

# Women's Cool Training Shorts

JC088

- » 87% Polyester, 13% Elastane, these streamline designed shorts with great flexibility feature a short inside leg and a smooth elasticated waistband for a comfortable fit
- » The CoolFit™ fabric this style is crafted from creates ease of movement and a natural range of motion to let you move freely during your workout
- » Fabric weight: 280gsm

**Sizes**  
XS 8   S 10   M 12   L 14   XL 16



Jet Black





## Women's Cool Jog Shorts

JC074

- » 60% Polyester, 35% Cotton, 5% Elastane
- » Carefully crafted to provide a relaxed girlie fit, these are the ideal pair of shorts for a range of workouts
- » Made from wicking polycotton fabric, these jog shorts have been designed for exceptional comfort. With cool girlie fit, elasticated waistband with drawcords and pockets at side seams
- » Fabric weight: 240gsm

### Sizes

XS 8 S 10 M 12 L 14 XL 16



*Crafted by Surridge*

## Dual Active Short

DU029

WHITE LABEL

- Premium Quality •
- Great Price • Your Brand •

- » Soft feel performance stretchy microfibre material
- » Half leg with poly/lycra inner
- » Now with longer inner pant to be lower than the short

### Unisex Sizes

XXS-UK 4, XS-UK 6, S-UK 8,  
M-UK 10, L-UK 12, XL-UK 14, XXL-UK 16



## Blade Skort

SUR380

- » 100% Performance Pique Skort, made with high quality polyester with an elastane inner lining
- » Embroidered Surridge SS logo to the left hem

### Ladies Sizes

4 6 8 10 12 14 16 18

**Bespoke Badge Option:**  
Add your Club Badge in full colour. Sponsor logos can also be added to the back left and right of the skort.



### Dual Trim Colour Options





# Surridge Quarter Sock

SUR480

- » A modern quarter sock made with Acrylic, a cotton sole for extra comfort
- » Printed gripper on the sole for extra grip
- » A perfect pair of socks for playing football, rugby or gym wear
- » Minimum order of 300pcs

**Unisex Sizes**

3-6 7-11



Royal



Red



Emerald



White



Maroon



Black



Navy

**Bespoke  
Badge Option:**  
You can replace  
the SS logo with  
your own School  
Crest for a more  
bespoke look.  
Grippers will  
also match to  
School Crest.



EST. 1867

*Crafted by Surridge*

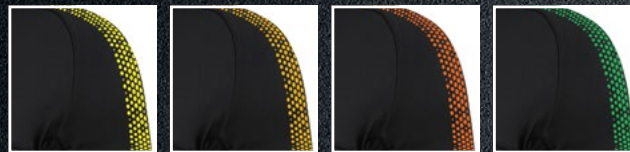




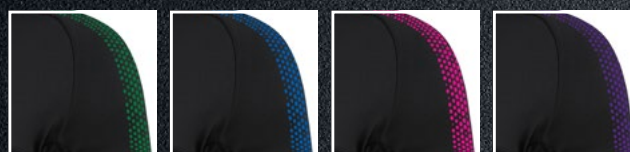
# DUAL TRAINING RANGE

## YOUR COLOURS YOUR WAY

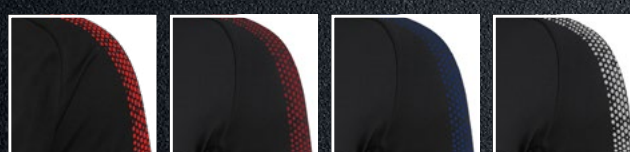
Our entire Dual Range is available in 17 SS colours or choose unbranded – without SS branding



Yellow Amber Orange Emerald



Bottle Royal Pink Purple



Red Maroon Navy Silver



Sky Black Jade Gold

### Dual Trim Colour Options



**Dual Trim Designs:**

**Dual Dots**

**Diagonal Stripe**

Black  
White  
Mens Fit



**ADD YOUR BRAND!**  
**INTERNAL SURRIDGE BRANDING**  
**ONLY.**  
BACK NECK TAPES AND SIZE LABELS ARE  
SS BRANDED

Navy  
White  
Ladies Fit



Dual Trims = Dual Dots and Diagonal Stripe



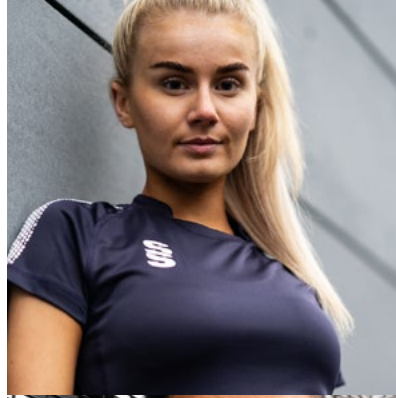
# DUAL TRAINING RANGE



We can also produce a bespoke Dual Trim with a minimum of 100 prints (50 garments)







Navy Emerald



Bottle White



Maroon White



Amber White

ADD YOUR BRAND!  
INTERNAL SURRIDGE BRANDING  
ONLY.  
BACK NECK TAPES AND SIZE LABELS ARE  
SS BRANDED



Black  
White



Red White



Royal White



White Black



Sky White



Orange White



Purple White



Emerald White

## Dual Training Shirt DU009

- » Performance Polyester pique fabric with contoured underarm side panel in breathable reverse pique fabric
- » Forward side seam detail with flat-lock stitching for the ultimate smooth and comfort
- » Stand collar and raglan seam sleeve and contrast colour graphic print available on shoulders
- » Contoured underarm side panel in breathable reverse pique fabric

### Unisex Sizes

SJ MJ LJ YTH  
S M L XL XXL XXXL

**NEW!**

Dual Stripe  
design also  
available



### Also available in

XXSJ (3-4yrs) XSJ (5-6yrs)

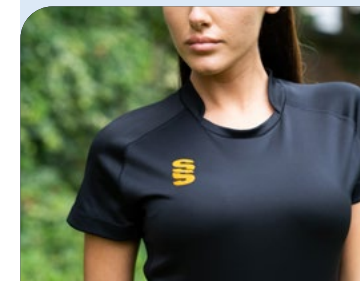
### Ladies Sizes (with a slight capped sleeve)

4/6 (xSmall) 8/10 (Small) 12/14 (Medium) 16/18 (Large)

### Dual Trim Colour Options



**Dual Trim  
Designs:**



**DUAL**  
TRAINING RANGE





White

Navy



Black

Royal

Red



ADD YOUR BRAND!  
INTERNAL SURRIDGE BRANDING  
ONLY.  
BACK NECK TAPES AND SIZE LABELS ARE  
SS BRANDED

**NEW!**

Dual Stripe  
design also  
available



## Dual Polo DU018

- » Performance Polyester pique fabric with contoured underarm side panel in a breathable reverse pique fabric
- » Placket neck collar and colour contrast Dual print on both shoulders
- » Branded **VAPADRI™** neck tape
- » Choice of SS and Dual Print colours to suit your branding

### Unisex Sizes

SJ MJ LJ YTH

S M L XL XXL XXXL XXXXL XXXXXL

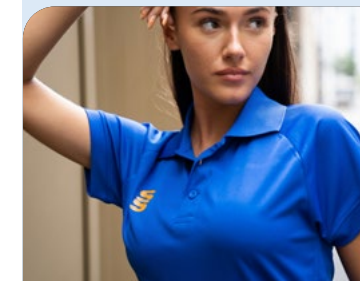
### Ladies Sizes (with a slight capped sleeve)

4/6 (Xsmall) 8/10 (Small) 12/14 (Medium) 16/18 (Large)

### Dual Trim Colour Options



**Dual Trim  
Designs:**



**DUAL**  
TRAINING RANGE



Navy Marl



**NEW!**  
Dual Stripe  
design also  
available



**Dual Trim Colour Options**

**Dual Trim Designs:** Dual Dots Diagonal Stripe

# Dual Gym Shirt

DU014

ADD YOUR BRAND!  
INTERNAL SURRIDGE BRANDING  
ONLY.  
BACK NECK TAPES AND SIZE LABELS ARE  
SS BRANDED

- » Performance polyester marl fabric with contoured underarm side panel in breathable interlock fabric
- » Crew neck collar and contrast colour 'Dual' graphic print on both shoulders
- » Choice of SS and Dual Print colours to suit your branding

## Unisex Sizes

SJ MJ LJ YTH  
S M L XL XXL XXXL XXXXL XXXXXL



Black Marl      Royal Marl      Grey Marl



**DUAL**  
TRAINING RANGE

Royal Marl



**NEW!**  
Dual Stripe  
design also  
available



ADD YOUR BRAND!  
INTERNAL SURRIDGE BRANDING  
ONLY.  
BACK NECK TAPES AND SIZE LABELS ARE  
SS BRANDED

**Dual Trim Colour Options**

**Dual Trim Designs:** Dual Dots Diagonal Stripe

# Dual Performance Top

DU013

- » Made from melange Pro-Polyester with a lightly brushed feel and soft inner fleece lining
- » Subtle marl printed body
- » 1/4 Zip neck detail for breathability
- » Dual print on both shoulders and reflective zip detailing
- » Choice of SS and Dual Print colours to suit your branding

## Unisex Sizes

SJ MJ LJ YTH  
S M L XL XXL XXXL XXXXL XXXXXL



Black Marl      Grey Marl      Navy Marl



**DUAL**  
TRAINING RANGE





Navy



Royal



ADD YOUR BRAND!  
INTERNAL SURRIDGE BRANDING  
ONLY.  
BACK NECK TAPES AND SIZE LABELS ARE  
SS BRANDED



Black (Female fit)



Grey

## Dual Zipped Hoodie DU012

- » 100% performance polyester and bonded fleece lining
- » Modern slim fit with toggles on hem for adjustable sizes
- » Full zip hoodie with reflective, water resistant zip detail
- » Two large zip pockets with soft fleece lining and elastic binding at sleeve ends
- » Toggle features to keep out the wind
- » French shoulder seam for comfort and dual print to shoulder
- » Choice of SS and Dual Print colours to suit your branding

### Unisex Sizes

SJ MJ LJ YTH  
S M L XL XXL XXXL  
XXXXL XXXXXL

**NEW!**

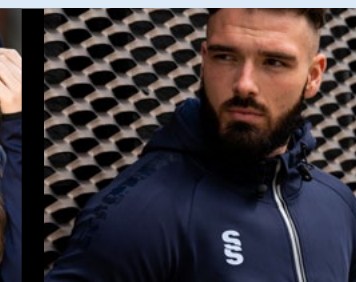
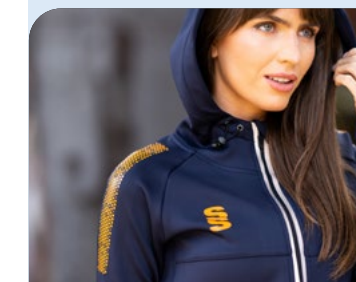
Dual Stripe  
design also  
available



### Dual Trim Colour Options



**Dual Trim  
Designs:**



**DUAL**  
TRAINING RANGE



# Dual Pro Training Vest DU033

ADD YOUR BRAND!  
INTERNAL SURRIDGE BRANDING  
ONLY.  
BACK NECK TAPES AND SIZE LABELS ARE  
SS BRANDED

- » 100% performance polyester melange super stretch material
- » Nicely fitted shirt perfect for the gym and those warm days training outside
- » Contoured underarm side panel in breathable reverse pique fabric

Unisex Sizes  
SJ MJ LJ YTH  
S M L XL XXL

Navy



Black



Contoured underarm



17 SS Colour Options



Create your own 3D effect, bespoke

# BADGES & APPLIQUÉS

Limitless possibilities for garment customisation. Silicone and TPU are just 2 of the options available.

YOUR KIT - YOUR COLOURS - YOUR WAY - YOUR BRAND



Minimum orders of 100 apply. 3-4 Week delivery.

*Crafted by Surridge*

S U R R I D G E S P O R T . C O M  
[www.surridgesport.com/en/badges-applique](http://www.surridgesport.com/en/badges-applique)







Black

Navy



## Camo Training Shirt DU031

- » Performance camo interlock fabric with contoured underarm side panel
- » Forward side seam detail with flat-lock stitching for ultimate comfort
- » Crew neck self fabric collar and raglan seam sleeve and contrast colour graphic print available on shoulders
- » SS logo colour to match the Dual Print

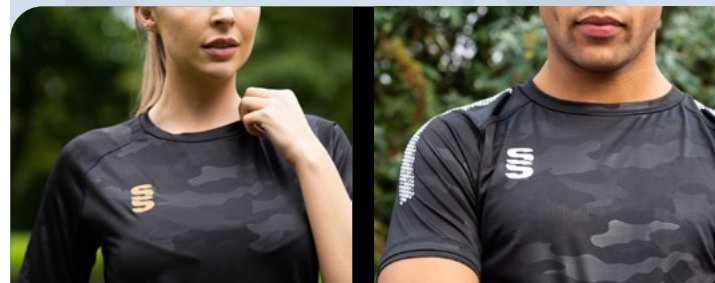
### Unisex Sizes

SJ MJ LJ YTH  
S M L XL XXL XXXL

**ADD YOUR BRAND!**  
INTERNAL SURRIDGE BRANDING  
ONLY.

BACK NECK TAPES AND SIZE LABELS ARE  
SS BRANDED

**NEW!**  
Dual Stripe  
design also  
available

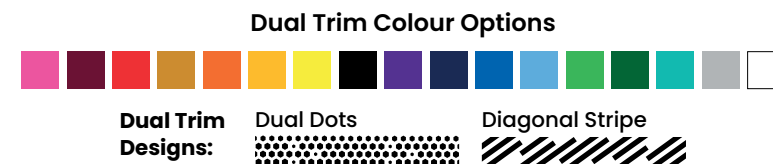


**CAMO**  
RANGE



Navy

Black



## Camo Performance Top DU032

- » 275 gsm structured soft feel camo woven polyester material
- » Ultra modern fitted ¼ zip collar with fitted sleeves and binded sleeve hems
- » Adjustable draw cords in hem
- » Dual print on both shoulders and reflective zip detailing
- » SS printed to chest to match Dual Print colour

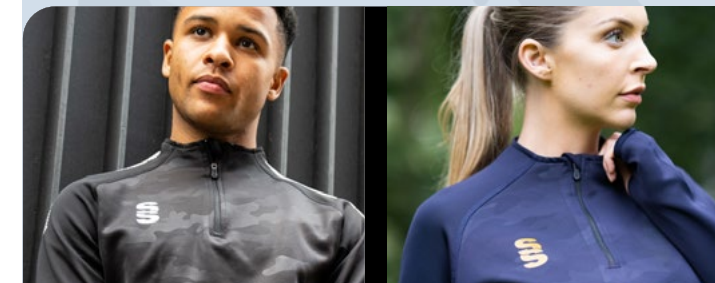
### Unisex Sizes

SJ MJ LJ YTH  
S M L XL XXL XXXL

**ADD YOUR BRAND!**  
INTERNAL SURRIDGE BRANDING  
ONLY.

BACK NECK TAPES AND SIZE LABELS ARE  
SS BRANDED

**NEW!**  
Dual Stripe  
design also  
available



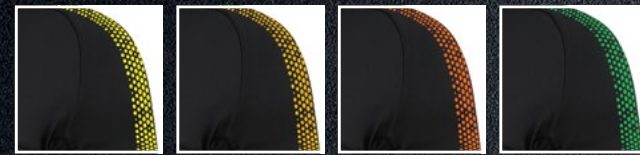
**CAMO**  
RANGE



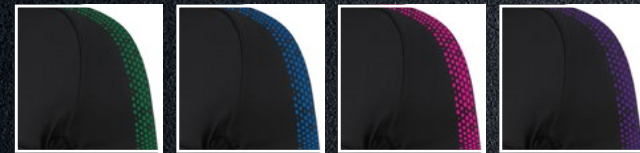
# FUSE RANGE

## YOUR COLOURS YOUR WAY

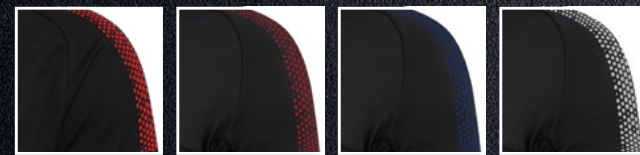
Our entire Fuse Range is available in 17 SS colours or choose unbranded – without SS branding



Yellow Amber Orange Emerald



Bottle Royal Pink Purple



Red Maroon Navy Silver



Sky Black Jade Gold

### Fuse Trim Colour Options



**Fuse Trim Designs:** Dual Dots Diagonal Stripe



Navy  
White  
White

Black  
White  
White

### Fuse Trim Colour Options



**Fuse Trim Designs:** Dots Diagonal Stripe

## Fuse T-Shirt DU365

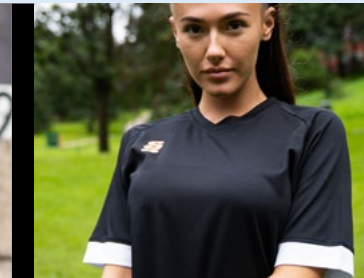
ADD YOUR BRAND!  
INTERNAL SURRIDGE BRANDING  
ONLY.  
BACK NECK TAPES AND SIZE LABELS ARE  
SS BRANDED

- » Performance Polyester pique, crossover V-Neck
- » Forward position side seams with contrast insert
- » Contrast back yoke
- » French seam shoulder construction for comfort and durability
- » Forward side seams with contrasting coloured insert
- » Printed SS logo to chest
- » Fabric weight: 150gsm

### Unisex Sizes

SJ MJ LJ YTH  
S M L XL XXL XXXL

**NEW!**  
Fuse Stripe  
design also  
available



**FUSE  
RANGE**





**Fuse Trim Colour Options**

Fuse Trim Designs: Dots Diagonal Stripe

## Fuse Polo Shirt DU366

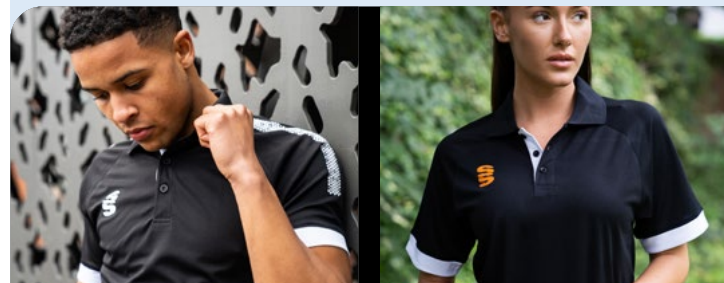
ADD YOUR BRAND!  
INTERNAL SURRIDGE BRANDING  
ONLY.  
BACK NECK TAPES AND SIZE LABELS ARE  
SS BRANDED

- » Performance Polyester pique, 3 button placket with 1x1 polyester rib collar
- » Forward position side seams with contrast insert
- » Contrast back yoke
- » French seam shoulder construction for comfort and durability
- » Forward side seams with contrasting coloured insert
- » Printed SS Logo to chest
- » Fabric weight: 150gsm

### Unisex Sizes

SJ MJ LJ YTH  
S M L XL XXL XXXL

**NEW!**  
Fuse Stripe  
design also  
available



**FUSE**  
RANGE

ADD YOUR BRAND!  
INTERNAL SURRIDGE BRANDING  
ONLY.  
BACK NECK TAPES AND SIZE LABELS ARE  
SS BRANDED



**Fuse Trim Colour Options**

Fuse Trim Designs: Dots Diagonal Stripe

## Fuse 1/4 Zip Performance Top DU368

- » Made from heavy brushed french terry material to give warmth and comfort
- » 1/4 Zip neck detail for breathability
- » Dual print on both shoulders and reflective zip detailing
- » Personalise the Fuse range with SS logo colour to match the chosen Dual Print
- » Printed SS logo to chest
- » Fabric weight: 275gsm

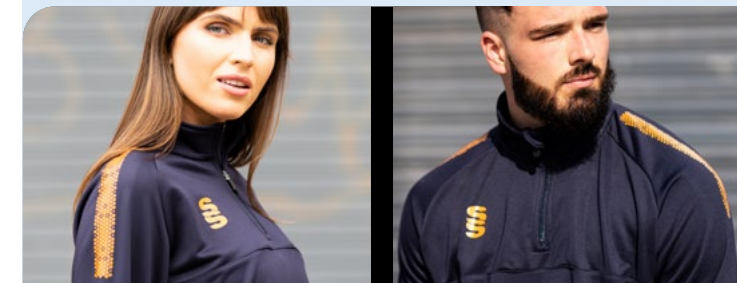
### Unisex Sizes

SJ MJ LJ YTH S M L XL  
XXL XXXL XXXXL XXXXXL

### Also available in

XXSJ (3-4yrs) XSJ (5-6yrs)

**NEW!**  
Fuse Stripe  
design also  
available



**FUSE**  
RANGE



Maroon



## Active 1/4 Zip Maroon Performance Top WL001

- » Made from heavy brushed french terry material to give warmth and comfort
- » 1/4 Zip neck detail for breathability
- » Reflective zip detailing
- » Fabric weight: 275gsm

### Unisex Sizes

SJ MJ LJ YTH  
S M L XL XXL XXXL

### Also available in

XXSJ (3-4yrs) XSJ (5-6yrs)

Maroon  
Reverse



Bottle



### 17 SS Colour Options



WHITE LABEL

- Premium Quality •
- Great Price • Your Brand •

Available without SS branding and includes tear out label.



Navy

### Fuse Trim Colour Options



Fuse Trim  
Designs:

Dots



Diagonal Stripe



## Fuse Hoodie DU367

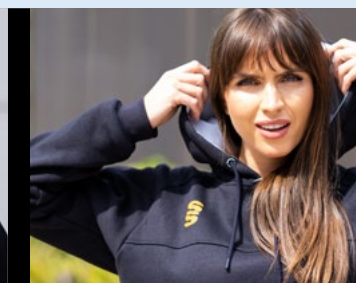
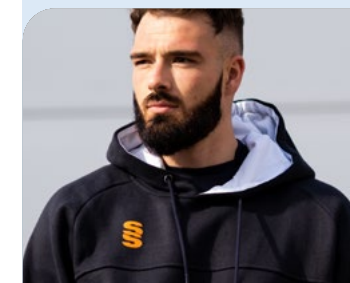
ADD YOUR BRAND!  
INTERNAL SURRIDGE BRANDING  
ONLY.  
BACK NECK TAPES AND SIZE LABELS ARE  
SS BRANDED

- » Polyester and Cotton fabric blend
- » French seam shoulder construction for comfort and durability
- » Branded eyelets with tube draw cord
- » Large front hoodie pocket
- » Forward side seams with contrasting insert
- » Personalise the Fuse range with SS logo colour to match the chosen Dual Print
- » Printed SS logo to chest
- » Fabric Weight: 300gsm.

### Unisex Sizes

SJ MJ LJ YTH  
S M L XL XXL XXXL

**NEW!**  
Fuse Stripe  
design also  
available



**FUSE**  
RANGE





**BLADE**  
**TRAINING RANGE**

A unique stock training range  
available in 12 different colourways



Contrast Back  
Yoke with SS

## Blade Training T-Shirt

SUR365














- » Regular fit, performance polyester pique, crossover V-Neck
- » Forward position side seams with contrast insert
- » Contrast back yoke with embroidered SS logo
- » French seam shoulder construction for comfort and durability
- » Forward side seams with contrasting coloured insert.
- » Embroidered Surridge logo to chest
- » Fabric weight: 150gsm

### Unisex Sizes

SJ MJ LJ YTH  
S M L XL XXL XXXL

### Colours

Shirt/Sleeve/Side Seam

 Black Amber White	 Black Orange White	 Black Purple White	 Red Black White	 Emerald Black White
 Royal Navy White	 Royal Navy Amber	 Emerald Navy White	 Bottle Navy Amber	 Sky Navy White
 Maroon Navy White	 Red Navy White	 White Navy		



**BLADE**  
TRAINING RANGE





Contrast Back Yoke with SS

## Blade Polo Shirt

SUR366

- » Performance Polyester pique
- » 3 button placket with 1x1 polyester rib collar
- » Forward position side seams with contrast insert
- » Contrast back yoke with embroidered SS logo
- » French seam shoulder construction for comfort and durability
- » Forward side seams with contrasting coloured insert
- » Embroidered Surridge logo to chest
- » Fabric weight: 150gsm

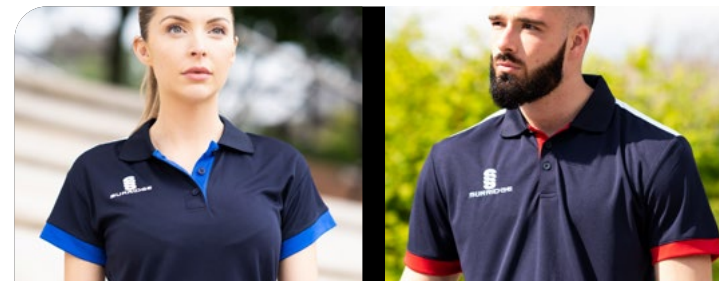
### Unisex Sizes

SJ MJ LJ YTH  
S M L XL XXL

### Colours

Shirt/Sleeve/Side Seam

	Black Amber White		Black Orange White		Black Red White		Black Purple White		Black Emerald White
	Navy Bottle Amber		Navy Royal Amber		Navy Royal White		Navy Sky White		Navy Maroon White
	Navy Red White		Navy Emerald White						



**BLADE**  
TRAINING RANGE



## Blade Hoody

SUR367

- » Polyester and Cotton fabric blend
- » Contrasting inner hood lining and chest panel
- » French seam shoulder construction for comfort and durability
- » Branded eyelets with tube draw cord
- » Large front hoodie pocket
- » Forward side seams with contrasting insert
- » Embroidered Surridge logo to chest
- » Fabric weight: 300gsm

### Unisex Sizes

SJ MJ LJ YTH  
S M L XL XXL

### Colours

Hoody/Chest/Side Seam

	Black Amber White		Black Orange White		Black Red White		Black Purple White		Black Emerald White
	Navy Bottle Amber		Navy Royal Amber		Navy Royal White		Navy Sky White		Navy Maroon White
	Navy Red White		Navy Emerald White						



**BLADE**  
TRAINING RANGE





## Blade Performance Top SUR368

- » Performance Polyester French Terry material
- » Contrast chest panel and contrast back panel
- » Half Zip with SS performance locking rubber zip toggle
- » French seam shoulder construction for comfort and durability
- » Forward side seams with contrasting colour insert
- » Embroidered Surridge logo to chest
- » Fabric Weight: 250gsm

### Unisex Sizes

SJ MJ LJ YTH  
S M L XL XXL

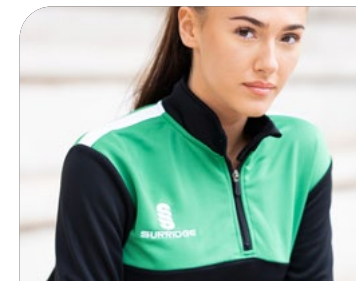


Contrast Back Yoke with SS

### Colours

Top/Chest/Side Seam

	Black Amber White		Black Orange White		Black Red White		Black Purple White		Black Emerald White
	Navy Bottle Amber		Navy Royal Amber		Navy Royal White		Navy Sky White		Navy Maroon White
	Navy Red White		Navy Emerald White						



**BLADE**  
TRAINING RANGE





# Dual Active Short

DU029

WHITE LABEL

• Premium Quality •

• Great Price • Your Brand •

- » Soft feel performance stretchy microfibre material
- » Half leg with poly/lycra inner
- » Now with longer inner pant to be lower than the short

**Unisex Sizes**  
XXS-UK 4, XS-UK 6, S-UK 8,  
M-UK 10, L-UK 12, XL-UK 14, XXL-UK 16



# Dual Short

DU020

WHITE LABEL

• Premium Quality •

• Great Price • Your Brand •

- » Poly peached Micro-fibre blend with modern shorter leg length, more suited to gym and physical exercise
- » Elasticated hem with drawcord for flexibility and comfort

**Unisex Sizes**  
SJ MJ LJ YTH  
S M L XL XXL XXXL



# Pocket Training Ripstop Shorts

SUR331

- » Polyester Ripstop wind resistant fabric with 2 pockets
- » Embroidered Surridge logo to thigh
- » Fabric Weight: 115gsm

**Unisex Sizes**  
SJ MJ LJ YTH  
S M L XL XXL  
**Ladies Sizes**  
8 10 12 14 16 18



# Blade Training Shorts

SUR370

- » 100% Polyester
- » 2 Pockets
- » Embroidered Surridge logo to thigh
- » Fabric Weight: 160gsm

**Unisex Sizes**  
SJ MJ LJ YTH  
S M L XL XXL





# Fuse Shorts

SUR457

- » Performance Polyester
- » Matches to the Polo and T-Shirt in the same range
- » No pockets
- » Elasticated hem for comfort

Unisex Sizes

SJ MJ LJ YTH  
S M L XL XXL XXXL

Also available in

XXSJ (3-4yrs) XSJ (5-6yrs)



# Blade Skort

SUR380

- » 100% Performance Pique Skort, made with high quality polyester with an elastane inner lining
- » Embroidered Surridge SS logo to the left hem

Ladies Sizes

4 6 8 10 12 14 16 18

**Bespoke Badge Option:**  
Add your Club Badge in full colour. Sponsor logos can also be added to the back left and right of the skort.



Dual Trim Colour Options



# Poplin Pant

SUR381

WHITE LABEL  
• Premium Quality •  
• Great Price • Your Brand •

- » Soft microfibre poplin outer
- » Straight leg traditional kit
- » Extra large ¾ side leg zip coming up to just below the pocket
- » Embroidered Surridge logo to left thigh
- » Soft cotton inner lining
- » Lycra gusset for flexibility
- » 2 zipped pockets
- » Mens and Ladies fits

Unisex Sizes

SJ MJ LJ YTH  
S M L XL XXL XXXL

Ladies Sizes

8 10 12 14 16 18

Available without Surridge branding, code: **DU385**



# Blade Slim Tek Pants

SUR378

- » French Terry material with polyester lycra insert at calf
- » Two invisible zip pockets for security
- » Embroidered Surridge logo to thigh

Unisex Sizes

SJ MJ LJ YTH  
S M L XL XXL





# Ripstop Track Pant

SUR375

- » Matte texture Ripstop-Polyester blend with mesh upper lining and Nylon Tafeta lower lining
- » Lycra gusset for flexibility and comfort with a drawcord
- » More modern slimmer leg fit from knee downwards
- » 12" side seam lower zip at hem

Available in  
Mens and Ladies Fits

Unisex Sizes

SJ MJ LJ YTH M L XL XXL

Ladies Sizes

8 10 12 14 16 18



# Performance Legging

DU028

- » 85% Polyester - 15% Elastane
- » 2 Side pockets for mobile and two smaller pockets (one with zip) for personal belongings
- » Printed Surridge logo to thigh
- » Available with and without SS logo
- » Dual print can be added for extra colour to calf

Ladies Sizes

7-8 9-10 11-12

8 10 12 14 16 18



Dual Trim Colour Options



Dual Trim  
Designs:



WHITE LABEL  
• Premium Quality •  
• Great Price • Your Brand •

Available without SS branding

# Dual Slim Tek Pants

DU019

- » Interlock Polyester material with Polyester Lycra insert at calf
- » Two invisible zip pockets for security
- » Choice of SS and Dual Print colours to suit your branding

Unisex Sizes

SJ MJ LJ YTH

S M L XL XXL XXXL

Also available in

XXSJ (3-4yrs) XSJ (5-6yrs)

WHITE LABEL  
• Premium Quality •  
• Great Price • Your Brand •

Available without SS branding

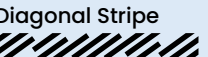


NEW!  
Dual Stripe  
design also  
available

Dual Trim Colour Options



Dual Trim  
Designs:



Navy







Black

Navy



## NEW! Dual Elite ¼ Zip Training Jacket DU381



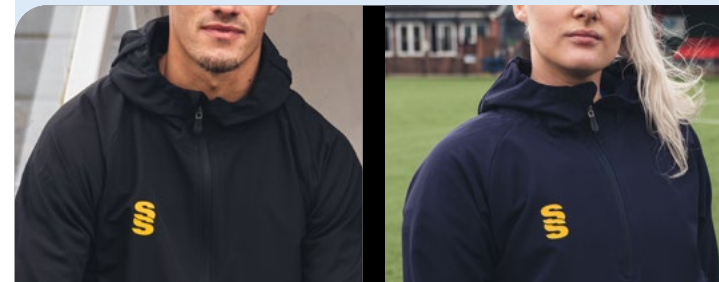
- » Modern overhead rain jacket with hood
- » Hoody and body is lined in the same material which has a light brush for a little warmth
- » The arms are well fitted for a modern look
- » Both front pockets are over sized with the same brushed lining for extra warmth
- » The material is matt and waterproof

### Unisex Sizes

SJ MJ LJ YTH  
S M L XL XXL XXXL



Available without SS branding and includes tear out label.



Navy



## Dual Training Jacket DU002



- » Wax Coated outer shell, light and fully waterproof
- » Reflective, water resistant zip detail and 2 zip pockets
- » Mesh lined hood with adjustable toggles
- » Underarm vents to stay breathable but warm

### Unisex Sizes

SJ MJ LJ YTH  
S M L XL XXL XXXL  
XXXXL XXXXXL

WHITE LABEL

- Premium Quality •
- Great Price • Your Brand •

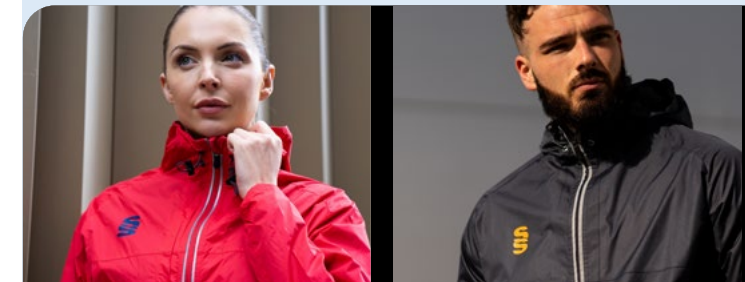
Available without SS branding



Red

Royal

Black







Black



## Dual Rain Jacket

DU003



- » Thick Wax Coated outer shell, rain-proof and soft fleece lined
- » Two zip pockets and placket zip cover on body and pockets
- » Taped seams so fully waterproof

### Unisex Sizes

SJ MJ LJ YTH  
S M L XL XXL XXXL  
XXXXL XXXXXL

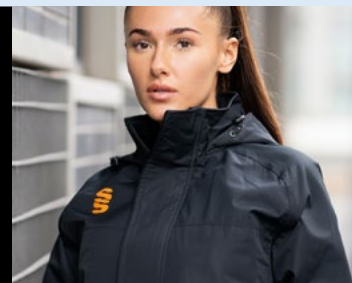


Navy

WHITE LABEL

- Premium Quality •
- Great Price • Your Brand •

Available without SS branding



Navy



## NEW! Dual Puffer Jacket

DU181



- » A cosy, highly fashionable, fitted and soft to touch down feel jacket with hand filled poly wadding for superior warmth
- » StormDri water repellent rip stop micro peach outer
- » The perfect lightweight jacket for cold and damp winter days

### Mens Sizes

S M L XL XXL XXXL

### Ladies Sizes

XS S M L XL XXL



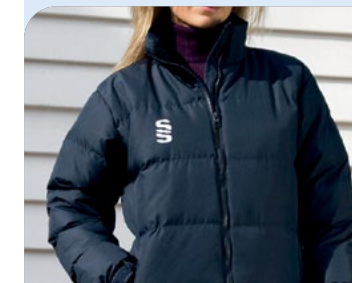
Ladies Back View  
Navy



Mens Back View  
Navy

ADD YOUR BRAND!  
INTERNAL SURRIDGE BRANDING  
ONLY.

BACK NECK TAPES AND SIZE LABELS ARE  
SS BRANDED







Black



Black

# NEW! Fleece Robe

## WL002



- » Waterproof and windproof outer shell fabric made from 100% polyester
- » Super-warm synthetic lambswool lining made from 100% polyester
- » Tailored, fitted sleeves with hook and loop fasteners at the wrist
- » Full length 2-way reversible zip
- » Minimal sealed seam construction
- » Deep, lined external zip pockets
- » 'A5' size internal, soft-lined pocket
- » Internal waterproof zip entry pocket - ideal for phone/wallet
- » 2 inner zips for print and embroidery access
- » Zip to reverse for print and embroidery access

*Designed to let you get changed anywhere, whilst protecting you from the elements, Fleece Robe is an essential piece of kit for all outdoor activities. The long sleeve design provides extra warmth and is ideal for those waiting to compete or watching sporting events. The jacket can be used multiple times throughout the day, over wet kit, without the need for drying between uses.*

*Fleece Robe is one tough bit of kit. It's been designed and tested to stand the wear and tear of an active lifestyle, cold conditions and any challenge you face.*

### Unisex Sizes

XS/S M/L XL/XXL

### 17 SS Colour Options



Black

Navy



Black



Black



Black



Navy



WHITE LABEL

- Premium Quality •
- Great Price • Your Brand •

Available without SS branding and includes tear out label.



Navy



NEW! Active Padded Jacket WL003



- » 100% Polyester showerproof material
- » Wind resistant with padded lining
- » 2 side zipped pockets
- » Sleeves have inner elasticated cuffs
- » Inner zip pocket
- » 2 inner zips for print and embroidery access
- Zip to reverse for print and embroidery access

Unisex Sizes

SJ S M L XL XXL XXXL XXXXL XXXXXL

Black Reverse



Navy Reverse



17 SS Colour Options



Black



Navy

Tear out label

WHITE LABEL

- Premium Quality •
- Great Price • Your Brand •

Available without SS branding and includes tear out label.

WHITE LABEL

- Premium Quality •
- Great Price • Your Brand •

Available without SS branding and includes tear out label.



Navy

Black



17 SS Colour Options



NEW! Active Gilet WL004



- » Showerproof, breathable and windproof
- » Soft elasticised armhole and hem
- » Contrast underarm panelling made from heavy brushed french terry material
- » Full front zip with chin guard
- » Two zip-closing pockets
- » Comfortable longer length
- » 2 inner zips for print and embroidery access

Unisex Sizes

YTH S M L XL XXL XXXL XXXXL XXXXXL



Navy Reverse



Black Reverse



SS  
EST. 1867



**NEW! Active Long  
Padded Jacket** WL005



- » 100% Polyester showerproof material
- » Wind resistant with padded lining
- » 2 side zipped chest pockets
- » 2 inner zips for print and embroidery access
- » Zip to reverse for print and embroidery access
- » Double ended front zip allows for comfort while seated

**Unisex Sizes**  
YTH S M L XL XXL XXXL XXXXL XXXXXL



Black  
Reverse



Navy  
Reverse



Black

Navy

**WHITE LABEL**  
• Premium Quality •  
• Great Price • Your Brand •

Available without SS branding and includes tear out label.

**Supersoft  
Padded Jacket** R233



- » Showerproof and Windproof
- » Hinged locker patch in neck for self-branding, soft bound cuff and hem, contrast lining and trim
- » Reflective hip detail with integral hood, full front zip
- » Zip pockets and hangtag
- » Solid colours ideal for schoolwear, easy to pack, super soft, lightweight and warm

**Mens Sizes**  
S M L XL XXL XXXL  
**Ladies Sizes**  
XS S M L XL XXL  
**Ages**  
2/3 3/4 5/6 7/8  
9/10 11/12 13/14



Black



Navy





# Holkham Down Feel Jacket R181



- » A cosy, highly fashionable, fitted and soft to touch down feel jacket with hand filled poly wadding for superior warmth
- » StormDri water repellent rip stop micro peach outer
- » The perfect lightweight jacket for cold and damp winter days

**Mens Sizes**

S M L XL XXL XXXL

**Ladies Sizes**

XS S M L XL XXL

Black



Navy



17 SS Colour Options



# Core Nova Lux Padded Gilet R223



- » Great cold weather protection
- » Super warmth without any weight
- » The Nova Lux padded bodywarmer offers comfort and style, the perfect layering gilet

**Unisex Sizes**

XS S M L

XL XXL XXXL

Black



Navy



17 SS Colour Options



Mens Fit  
Black



Ladies Fit  
Navy



17 SS Colour Options



# Ice Bird Padded Gilet R193



- » The gilet version of the modern classic design
- » This super lightweight and perfectly tailored contemporary gilet offers amazing warmth without weight from it's super air-soft handle and hand filled polyester wadding

**Mens Sizes**

S M L XL XXL

**Ladies Sizes**

XS S M L XL XXL



Orange



Frost Grey



Royal



EST. 1867



# Dual Long Sleeve Baselayer DU034

- » Baselayers are tight fitting garments which help stabilize muscles to help improve performance
- » SS logo available in 17 SS colours

Unisex Sizes

SJ MJ LJ YTH S M L XL XXL

Available without SS branding



Navy



# Dual Baselayer Legging DU040

- » Baselayers are tight fitting garments which help stabilize muscles to help improve performance
- » SS logo available in 17 SS colours

Unisex Sizes

SJ MJ LJ YTH

S M L XL XXL

Navy

Available without SS branding



WHITE LABEL

- Premium Quality •
- Great Price • Your Brand •

Applies to all items on this page.

# Dual Baselayer Short DU035

- » Baselayers are tight fitting garments which help stabilize muscles to help improve performance
- » SS logo available in 17 SS colours

Unisex Sizes

SJ MJ LJ YTH

S M L XL XXL

Navy

Available without SS branding



# Surridge Quarter Sock SUR480

SUR480

- » A modern quarter sock made with Acrylic, a cotton sole for extra comfort
- » Printed gripper on the sole for extra grip
- » A perfect pair of socks for playing football, rugby or gym wear
- » Minimum order of 300pcs

Unisex Sizes

3-6 7-11



Royal



Red



Emerald

Bespoke Badge Option:

You can replace the SS logo with your own School Crest for a more bespoke look. Grippers will also match to School Crest.



White



Maroon



Black



Navy



# Baseball Cap

SUR421

- » Classic fitted cap with comfortable five panel design
- » Eyelet mesh back panels for improved air flow & ventilation
- » Interior woven tape reinforcement for strength & durability
- » Adjustable tab at the back with hook & loop closure for custom fitting
- » Embroidered SS logo in white to left side of cap

**Size**  
One Size



**Colours**  
Classic Baseball Cap

Bottle

Maroon

Navy

Royal

Emerald

Black

NEW!

# Fuse Flexi Cap

SUR470

- » The Fuse Flexi cap is a modern shaped cap, lighter, sleeker, smarter and more comfortable
- » Its 6 panels are well finished, combining a lightweight visor fabrication and new three-layer multifunction sweatband
- » Inner sweatband and elastic fitting gives the most comfortable fit there is

**Unisex Sizes**  
S/M L/XL



**Colours**  
Fuse Flexi Cap

Navy

Maroon

Black

# Dual Hijab

DU030

- » Lightweight performance polyester material
- » Highly breathable and very cool to wear
- » SS print on right hand side

**Bespoke Badge Option:**  
Add your Club Badge in full colour

**Ladies Sizes**  
XS/S M/L



**17 SS Colour Options**

NEW!

# Scrunchies



- » Min Order of 100pcs.
- » 4-6 Weeks Production One Size
- » 100 @ £4.00 each (prices are ex vat and carriage)

**Sizes**  
One Size

**FULLY BESPOKE**  
Create your own unique Scrunchie



**Choose from 18 Base Colours**

Scan the QR code above or visit:  
[www.surridgesport.com/en/kitbuilder#/products/scrunchies](http://www.surridgesport.com/en/kitbuilder#/products/scrunchies)



NEW &  
IMPROVED!

# Dual Backpack

DU004

- » Over shoulder quality backpack made of polyester material
- » Boot compartment and mesh panel drink compartment
- » Reinforced shoulder straps plus chest strap
- » Cushioned straps and handles
- » Internal laptop compartment

Size: 50cm x 38cm

WHITE LABEL

- Premium Quality •
- Great Price • Your Brand •



Available  
without SS  
branding

17 SS Colour Options



# Small Holdall

SUR364

- » Stylish Holdall with plenty of space and includes wet compartment
- » 100% modern nylon with 2 end pockets

Size

64cm x 27cm x 30cm



EST. 1867

*Crafted by Surridge*



## NEW Water Bottle with Straw (600ml) DU045

Black/White or Blue/White

Water Bottle with time markings, Motivational Drink Bottles Leakproof and BPA-free (Blue).

**Motivational Quote & Time Marker:** Our bottles are featured with a frosted and translucent appearance helps you measure your daily water intake. This sport bottle with unique inspirational quotes and time markings will always remind you to take in the right amount of water to keep you hydrated throughout the day. Perfect for the gym, yoga, runners, travel, hiking, cycling, camping, school and office use.

**BPA Free & Premium Material:** This 600ml sports water bottle is great for both kids and adults, which is BPA-free, made of food-grade and safe Tritan material. Thickened water bottles body and anti slip canteen surface purpose to protect the bottle from falling and breakage.

**100% Leakproof:** The water bottle is equipped with a durable wrist strap and a Leak-proof seal inside the lid. It is 100% leakproof, durable and impact-resistant, making it easy to carry around and convenient for on-the-go hydration. And a safety lock prevents accidents from opening the lid.

**One Hand Opened:** Simply open with one hand by clicking the button on the lid, which is more convenient and quicker. The soft durable silicone nozzle make you enjoy spill-proof sipping. The 600ML capacity of the water bottle is easy to carry and lightweight.

**Easy Cleaning:** For best results we recommend hand wash, but it also can be dishwasher safe. Comes with 1 pcs bottle brush and straw brush to make cleaning easy and quick. A wide mouth makes cleaning and filling fruits & ice cubes easier.



## NEW! Vacuum Stainless Steel Bottle (500ml) DU046

- » Vacuum insulated stainless steel bottle with an iconic design
- » The insulated 18/8 stainless steel keeps drinks hot or cold for several hours
- » Tested and approved under Food Safe Legislation (LFGB), and tested for phthalates content according to REACH regulations
- » Featuring a base that fits in most cup holders
- » Volume capacity is 500ml
- » Presented in a recycled cardboard gift box
- » Drinking bottle in RPET with rubberised finish (frosted transparent) and stainless steel cap with inner RPET lid and silicone ring
- » BPA free. Leak-free

**Bespoke Badge Option:**  
Add your Club Badge  
in full colour.

**SS**  
EST. 1867

White



Black



Iconic  
Design Double  
Wall Stainless  
Steel Bottle



# Create Your Own Club Webshop



## Completely Free

No additional charges for setting up your own club webshop.



## Easy Personalisation

Add optional extras such as print, embroidery, initials, names and numbers.



## Hassle Free

No need to collate team orders as everyone can order individually.



## Quick Lead Times

Stock items have a fast turnaround within 10 working days from order placement.

COMPLETELY  
**FREE**

Create your own webshop as a Trader and put them on your website.

**FOR FREE!**

## NEW TRADE PORTAL 2025

Improved styling, lots more facilities and functionality



EST. 1867

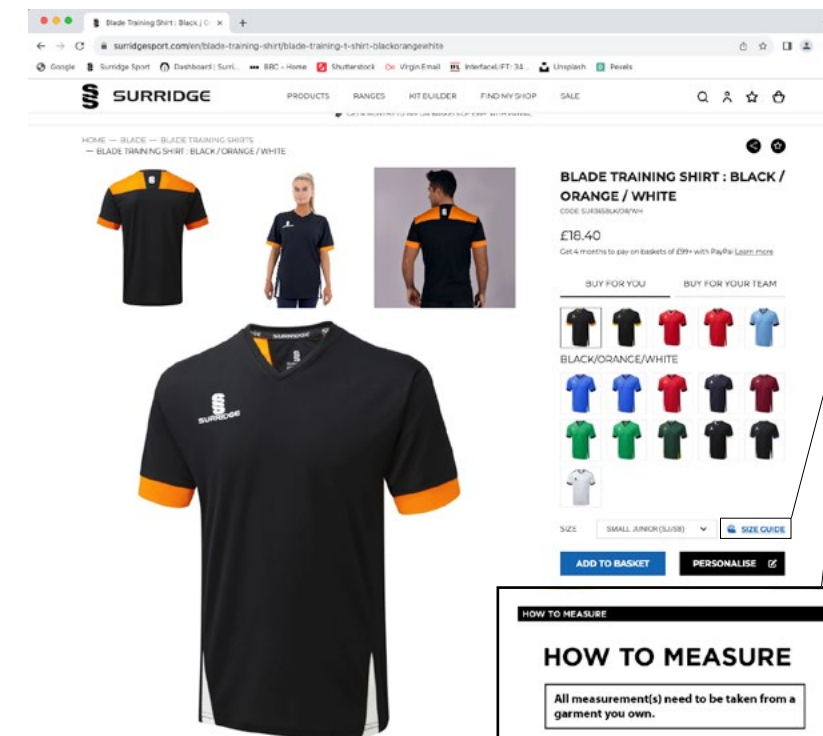
SURRIDGESPORT.COM

*Crafted by Surridge*

# SIZE GUIDES

All products requiring a size guide have their own individual guide and information on How To Measure on the chosen product web page (See example below)

1). Simply visit [www.surridgesport.com](http://www.surridgesport.com) or scan the QR Code bottom left



2). Select the chosen product, ie: Blade Training Shirt plus colour

3). Click on:

**SIZE GUIDE**

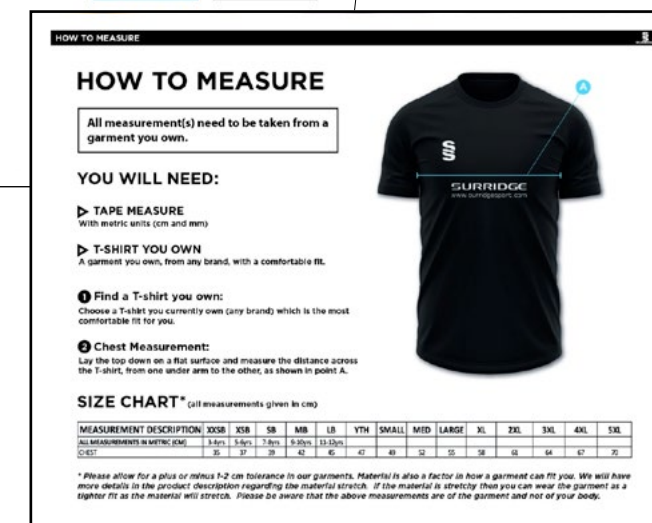
Which will then take you to the product size guide window shown below



Scan me from your device



EST. 1867



# WASHING INSTRUCTIONS

Surridge Sport garments are manufactured from top quality fabrics. All fabrics & logos undergo stringent quality tests to ensure durability and wash-ability. They will last for many years if properly cared for. When washing garments always refer to the instructions on the garment label.

## Playing Kits

First wash – Always wash shirts, shorts and socks inside out & separately to remove surface dye.

Avoid leaving kits folded or bundled together for any length of time whilst damp or soiled. Remove excess mud and wash as soon as possible after use to avoid stains from setting.

Garments may discolour due to staining by substances such as mud, grass, petroleum jelly etc, which may not entirely be removed by washing alone. Treat stains directly with a stain remover as soon as possible.

Take care not to use stain remover on transfers applied to the garment as this may effect the quality of the print. Some of the toughest stains may require more than one treatment.

- Do not over load the washing machine and always wash light and dark colours separately.
- Do not wash above the temperature stated on the garment label. (many items 30°C)
- Do not use fabric softener.
- If the garment can be tumble dried (see care label) always tumble dry cool.
- Never iron printed motifs

## Training Wear / Outer Wear

Dirt on outer wear (padded jacket, rain jacket, training jacket) should be wiped off with a damp cloth. These garments do not require regular washing as this will remove the shower proofing. If necessary wash inside out, no hotter than 30 degrees on a synthetic wash.

- Do not use fabric softener.
- Do not tumble dry.
- Never iron printed motifs.

Surridge Sport does not accept liability for discolouration or damage to garments due to incorrect laundering.



+44 (0) 1282 418 418



sales@surridgesport.com



SDL Group Ltd, Britannia Centre,  
Network 65 Business Park, Burnley, Lancashire, BB11 5ST



EST. 1867

*Crafted by Surridge*

S U R R I D G E S P O R T . C O M



All information within this catalogue was correct at the time of production and is subject to change without prior notice.

