

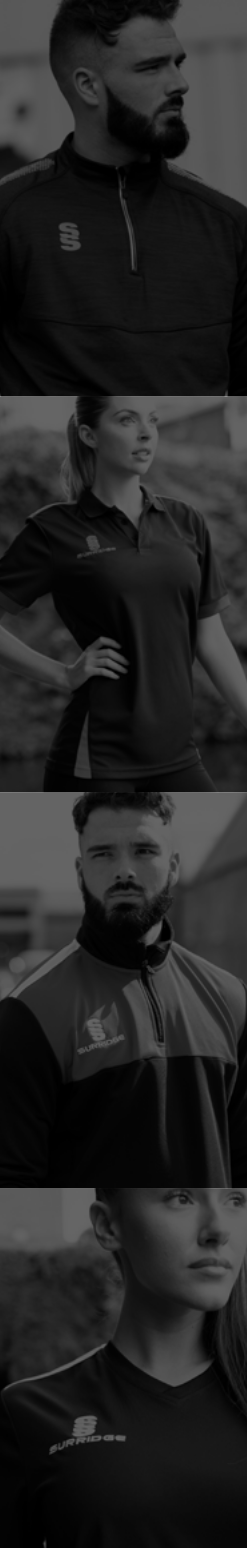


EST. 1867

*Crafted by Surridge*

**NETBALL  
SPORTSWEAR**  
Catalogue





## Contents:

- » Company Background
- » Experience
- » Bespoke Kit Design
- » **NEW!** Fast Track Range
- » **NEW!** Impact Range
- » Dual Range
- » Camo Range
- » Fuse Range
- » Blade Range
- » Webshop
- » Size Guide

## NEW for 2025!

### WHITE LABEL

**Surridge is excited to be launching our very own WHITE LABEL range.**

This range will give you the opportunity to rebrand any of our **WHITE LABEL** products with your very own logos. Trust in our 150 years of experience to enhance your product offering to your customers.

**Premium Quality • Great Price • Your Brand**

**Look out for the logo throughout the catalogue.**



In 1867 Percy Stuart Surridge created a sports brand. He applied the principles of tradition and craft, with the concept of bringing innovation to improve performance, creating products defined by craftsmanship, originality and Britishness.

Today, we are a brand that not only connects with our markets and consumers but keeps with our origins and principles set over 150 years ago.

Surridge Sport head office, warehousing and production facilities are based in Burnley, Lancashire. The site has in house embroidery, manufacturing, print and embellishment facilities along with a dedicated design and product development team and a fully equipped distribution/customer service team. This allows Surridge the flexibility to manage and service its portfolio of accounts simply and efficiently, maintaining day to day fulfilment of orders as well as looking to make improvements and handle any quick turnaround of kit that may be required. Careful planning with account management shall ensure the organisation's needs will be prepared for in advance and progressed in an organised and agreed fashion.

The company is wholly family owned in the UK and is self-financed operating from our own custom built facilities in Lancashire of 60,000 sq ft. We will be happy to produce copies of our audited accounts to satisfy any due diligence procedures and we formally extend an open invite to any of your personnel to visit us at any time.

Surridge Sport uses factories in the Far-East for production of the proposed range. We have developed strong relationships with the suppliers and have worked with them for many years. We also have employees based in the factories to help manage the supply.

## Objective

Surridge Sport aim to supply you with a commercially attractive proposal and a high performance playing and training range at competitive prices. We also guarantee a high level of contract management, quality of product and a seamless transition of supply.

*Crafted by Surridge*

SURRIDGE



# Experience



Bangor  
University



Bristol  
University



University  
of Hull



Brunel  
University



CHEL TENHAM  
COLLEGE



Aberystwyth  
University



Aston  
University



Halliford  
School



Stratford  
Thunderbirds



University  
of Manchester



Liverpool John  
Moores University



Queen Mary's  
University



University  
of Leeds



University  
of Bath



University  
of Essex



REGENT'S  
UNIVERSITY LONDON



De Montfort University



UNIVERSITY of  
GREENWICH

Surridge Sport have vast experience in the Netball arena currently supplying thousands of clubs worldwide from grass roots through to professional clubs.



EST. 1867

*Crafted by Surridge*

LIMITLESS  
DESIGN  
AND COLOUR  
OPTIONS  
AVAILABLE

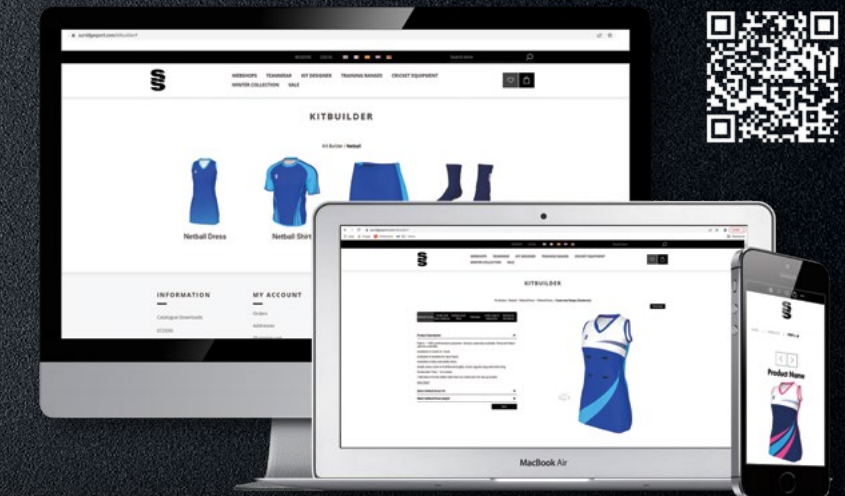
## DISCLAIMER

Please allow for a plus or minus 1-2cm tolerance in our garments. Material is also a factor in how a garment can fit you. We will have more details in the product description regarding the material stretch. If the material is stretchy then you can wear the garment as a tighter fit, as the material will stretch. Please be aware that measurements are of the garment and not of your body.

# DRESS SIZING

Visit: [www.surridgesport.com](http://www.surridgesport.com)

- A variety of necklines and back stylings are available in both our Adult Standard and Pro Fit dresses
- All of our adult sizes are available in 4 different lengths: Short, Regular, Long, Extra Long
- Kids sizes starting from 7/8 years are also available



## Sizes & Lengths:

Standard Fit: XXS (6), XS (8), S (10), M (12), L (14), XL (16), XXL (18)

Standard Fit Lengths: Short, Standard, Long, X-Long & XX-Long

Pro Fit: XXS (6), XS (8), S (10), M (12), L (14), XL (16), XXL (18)

Pro Fit Lengths: Short, Standard, Long & X-Long

Kids Sizes (full length): 7/8yrs, 9/10yrs, 11/12yrs & 13/14yrs

For full sizing details visit our website  
[www.surridgesport.com/kitbuilder](http://www.surridgesport.com/kitbuilder) or scan the QR code.





Create your own bespoke design

# NETBALL DRESS

Visit: [www.surridgesport.com](http://www.surridgesport.com)



Add your Club Badge, Team Logo's,  
Names, Numbers and Sponsors



*Crafted by Surridge*

Bespoke training wear ALSO AVAILABLE to match outfield for a more bespoke look.  
For more details visit our website [www.surridgesport.com/kitbuilder](http://www.surridgesport.com/kitbuilder) or scan the QR code above.

LIMITLESS DESIGN  
AND COLOUR OPTIONS  
AVAILABLE



Create your own bespoke design

# T-SHIRTS & SKORTS

Visit: [www.surridgesport.com](http://www.surridgesport.com)



LIMITLESS DESIGN  
AND COLOUR OPTIONS  
AVAILABLE



*Crafted by Surridge*

Bespoke training wear ALSO AVAILABLE to match outfield for a more bespoke look.  
For more details visit our website [www.surridgesport.com/kitbuilder](http://www.surridgesport.com/kitbuilder) or scan the QR code above.

Add your Club Badge, Team Logo's,  
Names, Numbers and Sponsors





Create your own bespoke design

# STOCK RANGE KIT

Visit: [www.surridgesport.com](http://www.surridgesport.com)



*Crafted by Surridge*

Compliment your design with our stock range of shorts and socks.

For more details visit our website [www.surridgesport.com/kitbuilder](http://www.surridgesport.com/kitbuilder) or scan the QR Code above.



## EXCLUSIVE VAPADRI™ Technology Designed for Athletes

ECODRI is an exclusive range of materials made with VAPADRI™ technology for Surridge Sport and other major sports brands. EcoDri is a 100% recycled material that is used in the dye sublimated process for most playing garments. Surridge Sport can offer an EcoDri material for all playing garments.

EcoDri is made from 100% recycled polyester yarn, produced from water bottles. This process is managed through our own research and development with our material factories in the Far East. All the EcoDri material is made with VAPADRI™ technology, meaning that the performance of the material is still to the highest standards that we offer. The EcoDri material is still at a premium in price but we are convinced that our pricing is still the most competitive on the market against our competition.



## ECO DRI

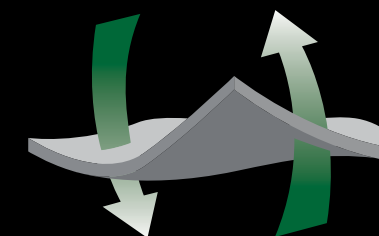
BY



THIS MATERIAL IS MADE FROM  
100% RECYCLED POLYESTER  
YARN, PRODUCED FROM  
RECYCLED WATER BOTTLES.



This performance fabric is designed for athletes. Garments made with VAPADRI™ technology can help the wearer stay "DRI" and as a result create zero distraction, allowing you to concentrate 100% on the game.



LIGHTWEIGHT



WICKING



BREATHABLE



ANTI-STATIC



MACHINE WASHABLE



FAST DRYING

SURRIDGE

0000







Create your own

# BESPOKE TRAINING KIT

Complement your  
sports kit with our wide range  
of bespoke training wear items

- » HOODIES
- » TEK PANTS
- » SKORTS
- » PERFORMANCE TOPS
- » LEGGINGS
- » T-SHIRTS
- » SHORTS
- » RAIN JACKETS
- » WALKOUT TOPS

*Crafted by Surridge*

YOUR KIT - YOUR COLOURS - YOUR WAY - YOUR BRAND



For more details scan the QR code opposite or visit [www.surridgesport.com/kitbuilder](http://www.surridgesport.com/kitbuilder)  
Complement your design with our stock range of shorts and socks.



EST. 1867

*Crafted by Surridge*

UNLIMITED RANGE  
OF DESIGNS AND  
COLOUR OPTIONS  
AVAILABLE

WHITE LABEL

• Premium Quality •  
• Great Price • Your Brand •



YOUR KIT - YOUR WAY



Dodge Range  
Bottle/Black/White  
Pink/Black/White



# FAST TRACK NETBALL

3 WEEK DELIVERY

## TAKE THE COURT BY STORM...

With our range of 9 unique netball dress designs specifically created for fast delivery.

Available in a wide selection of colour options.



*Crafted by Surridge*

Power Range  
Red/Black/White



MAKE YOUR KIT STAND OUT!



Shield Range  
Amber/Black/White



# FAST TRACK NETBALL

**3 WEEK DELIVERY**

BESPOKE NETBALL DRESS DESIGNS CREATED FOR FAST DELIVERY



Complete your fast track Netball kit by adding Surridge Sport stock range of netball socks.

## FAST TRACK DESIGN RANGE

The Range has been created with you in mind, INCLUDING the option too add your:

- » LOGO
- » CREST
- » NAME
- » NUMBER
- » SPONSOR

As many or as few as you'd prefer in a limitless range of colours.

**MAKE YOUR KIT  
STAND OUT!**

Also available:

**FAST TRACK**  
CRICKET 3 WEEK DELIVERY

**FAST TRACK**  
FOOTBALL 3 WEEK DELIVERY

**FAST TRACK**  
RUGBY 3 WEEK DELIVERY

Dream Range  
Royal/Navy/White

**SS**  
EST. 1867

Attack Range  
Navy/White



## DISCLAIMER

\*Please note: Set **SURRIDGE** colours between dresses and socks may differ slightly due to variations in dying and printing methods. Although every effort is made to match colours, exact colour matches cannot be guaranteed.



Available in  
Mens and Ladies Fits

Red



Reverse

Dual Trim Colour Options



Dual Trim  
Designs:

Dual Dots

Diagonal Stripe

## NEW! Impact T-Shirt DU382

- » 86% Polyester, 14% Spandex
- » Lightweight, performance enhancing fabric for premium comfort while training
- » Embossed design detail for increased durability and longevity
- » Specially designed construction to allow for optimum movement
- » Mesh under arm panels provide fast drying and ultimate cooling
- » Create your own look with unlimited print design options
- » Fabric weight: 180gsm

### Unisex Sizes

SJ S M L XL XXL XXXL

XXXXL XXXXXL

### Ladies Sizes

XS S M L

NEW!

Dual Stripe  
design also  
available



Black

Royal

Navy

Available in  
Mens and Ladies Fits

Black



Dual Trim Colour Options



Dual Trim  
Designs:

Dual Dots

Diagonal Stripe

## NEW! Impact 1/4 Zip Performance Top DU383

- » 95% Polyester, 5% Spandex
- » Lightweight and breathable whilst providing warmth and comfort
- » Embossed design detail for increased durability and longevity
- » Fast wicking and quick drying fabric offering premium moisture management to keep you warmer for longer
- » Specially designed construction to allow for optimum movement
- » Extendable thumbholes for extra comfort and warmth
- » Adjustable draw cords in the hem for a perfect fit
- » Create your own look with unlimited print design options
- » Fabric weight: 220gsm

### Unisex Sizes

SJ S M L XL XXL XXXL

XXXXL XXXXXL

### Ladies Sizes

XS S M L

NEW!

Dual Stripe  
design also  
available



Royal

Navy

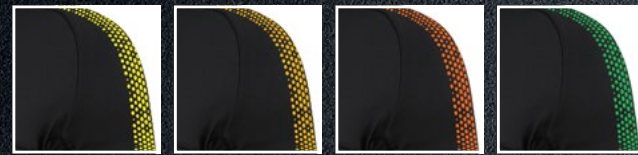
Red



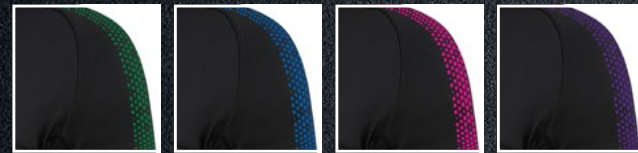
# DUAL TRAINING RANGE

## YOUR COLOURS YOUR WAY

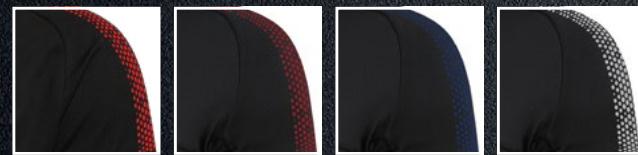
Our entire Dual Range is available in 17 SS colours or choose unbranded – without SS branding



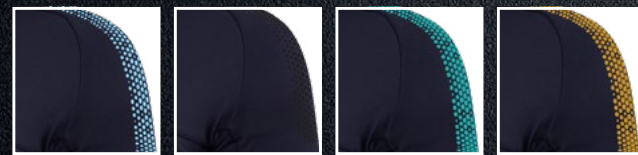
Yellow Amber Orange Emerald



Bottle Royal Pink Purple



Red Maroon Navy Silver



Sky Black Jade Gold

### Dual Trim Colour Options



Dual Trim Designs: Dual Dots Diagonal Stripe

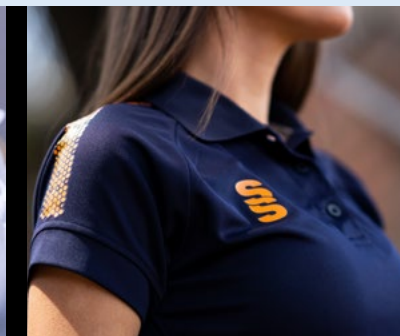
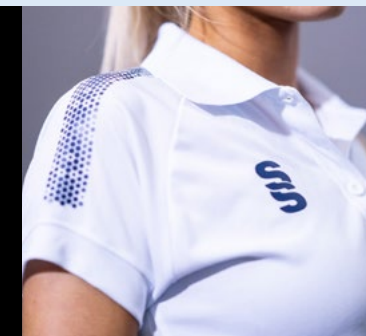
Black  
White



Navy  
White



Dual Trims = Dual Dots and Diagonal Stripe



# DUAL TRAINING RANGE



We can also produce a bespoke Dual Trim with a minimum of 100 prints (50 garments)







Red White



Navy White



White Black



Royal White



Black White



Bottle White



Purple White



Maroon White

## Dual Training Shirt DU009

ADD YOUR BRAND!  
INTERNAL SURRIDGE BRANDING  
ONLY.  
BACK NECK TAPES AND SIZE LABELS ARE  
SS BRANDED

- » Performance Polyester pique fabric with contoured underarm side panel in breathable reverse pique fabric
- » Forward side seam detail with flat-lock stitching for the ultimate smooth and comfort
- » Stand collar and raglan seam sleeve and contrast colour graphic print available on shoulders
- » Contoured underarm side panel in breathable reverse pique fabric

### Unisex Sizes

SJ MJ LJ YTH  
S M L XL XXL XXXL

### Also available in

XXSJ (3-4yrs) XSJ (5-6yrs)

### Ladies Sizes (with a slight capped sleeve)

4/6 (XSmall) 8/10 (Small) 12/14 (Medium) 16/18 (Large)

**NEW!**

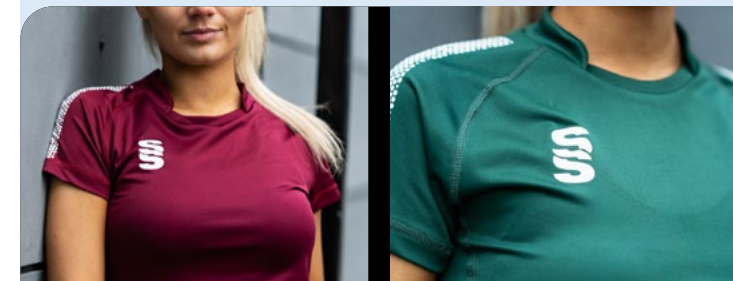
Dual Stripe design also available



### Dual Trim Colour Options



**Dual Trim Designs:**



**DUAL**  
TRAINING RANGE





White

Navy



Black

Royal

Red



**ADD YOUR BRAND!**  
INTERNAL SURRIDGE BRANDING  
ONLY.  
BACK NECK TAPES AND SIZE LABELS ARE  
SS BRANDED

**NEW!**  
Dual Stripe  
design also  
available



## Dual Polo DU018

- » Performance Polyester pique fabric with contoured underarm side panel in a breathable reverse pique fabric
- » Placket neck collar and colour contrast Dual print on both shoulders
- » Branded **VAPADRI™** neck tape
- » Choice of SS and Dual Print colours to suit your branding

### Unisex Sizes

SJ MJ LJ YTH  
S M L XL XXL XXXL XXXXL XXXXXL

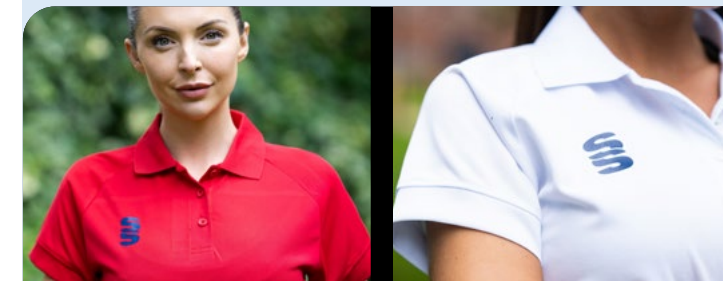
### Ladies Sizes (with a slight capped sleeve)

4/6 (XSmall) 8/10 (Small) 12/14 (Medium) 16/18 (Large)

### Dual Trim Colour Options



**Dual Trim  
Designs:**



**DUAL**  
TRAINING RANGE



Navy Marl



**NEW!**  
Dual Stripe  
design also  
available



Dual Trim Colour Options

Dual Trim Designs:

Dual Dots

Diagonal Stripe

# Dual Gym Shirt

DU014

ADD YOUR BRAND!  
INTERNAL SURRIDGE BRANDING  
ONLY.  
BACK NECK TAPES AND SIZE LABELS ARE  
SS BRANDED

- » Performance polyester marl fabric with contoured underarm side panel in breathable interlock fabric
- » Crew neck collar and contrast colour 'Dual' graphic print on both shoulders
- » Choice of SS and Dual Print colours to suit your branding

Unisex Sizes

SJ MJ LJ YTH  
S M L XL XXL XXXL XXXXL XXXXXL

DUAL  
TRAINING RANGE

Royal Marl

ADD YOUR BRAND!  
INTERNAL SURRIDGE BRANDING  
ONLY.  
BACK NECK TAPES AND SIZE LABELS ARE  
SS BRANDED

**NEW!**  
Dual Stripe  
design also  
available

Dual Trim Colour Options

Dual Trim Designs:

Dual Dots

Diagonal Stripe

# Dual Performance Top

DU013

- » Made from melange Pro-Polyester with a lightly brushed feel and soft inner fleece lining
- » Subtle marl printed body
- » 1/4 Zip neck detail for breathability
- » Dual print on both shoulders and reflective zip detailing
- » Choice of SS and Dual Print colours to suit your branding

Unisex Sizes

SJ MJ LJ YTH  
S M L XL XXL XXXL XXXXL XXXXXL

DUAL  
TRAINING RANGE





Navy



Royal



ADD YOUR BRAND!  
INTERNAL SURRIDGE BRANDING  
ONLY.  
BACK NECK TAPES AND SIZE LABELS ARE  
SS BRANDED



Black (Female fit)



Grey

## Dual Zipped Hoodie DU012

- » 100% performance polyester and bonded fleece lining
- » Modern slim fit with toggles on hem for adjustable sizes
- » Full zip hoodie with reflective, water resistant zip detail
- » Two large zip pockets with soft fleece lining and elastic binding at sleeve ends
- » Toggle features to keep out the wind
- » French shoulder seam for comfort and dual print to shoulder
- » Choice of SS and Dual Print colours to suit your branding

### Unisex Sizes

SJ MJ LJ YTH  
S M L XL XXL XXXL  
XXXXL XXXXXL

**NEW!**

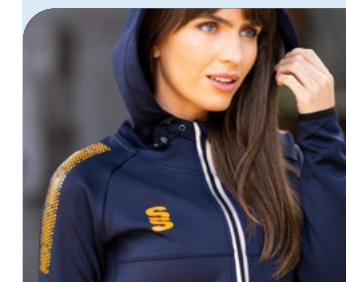
Dual Stripe  
design also  
available



### Dual Trim Colour Options



**Dual Trim  
Designs:**



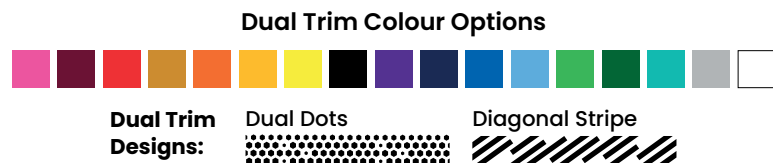
**DUAL**  
TRAINING RANGE





Black

Navy



## Camo Training Shirt DU031

- » Performance camo interlock fabric with contoured underarm side panel
- » Forward side seam detail with flat-lock stitching for ultimate comfort
- » Crew neck self fabric collar and raglan seam sleeve and contrast colour graphic print available on shoulders
- » SS logo colour to match the Dual Print

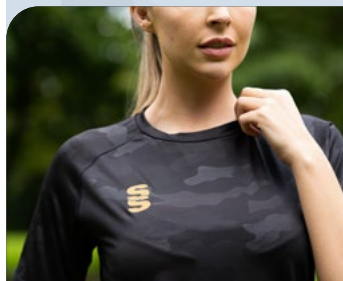
### Unisex Sizes

SJ MJ LJ YTH  
S M L XL XXL XXXL

ADD YOUR BRAND!  
INTERNAL SURRIDGE BRANDING  
ONLY.

BACK NECK TAPES AND SIZE LABELS ARE  
SS BRANDED

**NEW!**  
Dual Stripe  
design also  
available



**CAMO**  
RANGE



Navy

Black



## Camo Performance Top DU032

- » 275 gsm structured soft feel camo woven polyester material
- » Ultra modern fitted ¼ zip collar with fitted sleeves and binded sleeve hems
- » Adjustable draw cords in hem
- » Dual print on both shoulders and reflective zip detailing
- » SS printed to chest to match Dual Print colour

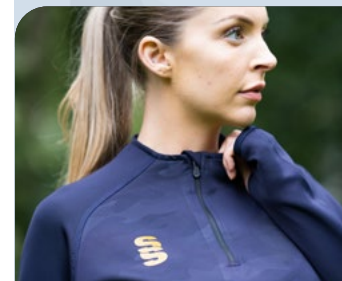
### Unisex Sizes

SJ MJ LJ YTH  
S M L XL XXL XXXL

ADD YOUR BRAND!  
INTERNAL SURRIDGE BRANDING  
ONLY.

BACK NECK TAPES AND SIZE LABELS ARE  
SS BRANDED

**NEW!**  
Dual Stripe  
design also  
available



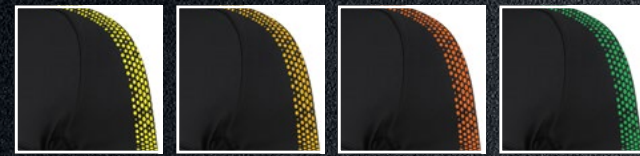
**CAMO**  
RANGE



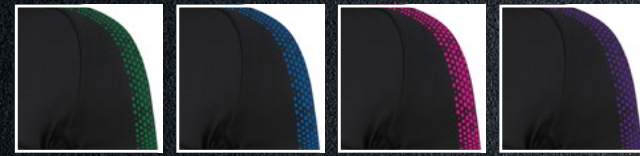
# FUSE RANGE

## YOUR COLOURS YOUR WAY

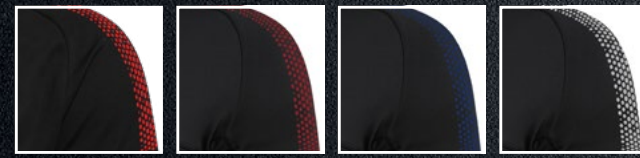
Our entire Fuse Range is available in 17 SS colours or choose unbranded – without SS branding



Yellow Amber Orange Emerald



Bottle Royal Pink Purple



Red Maroon Navy Silver

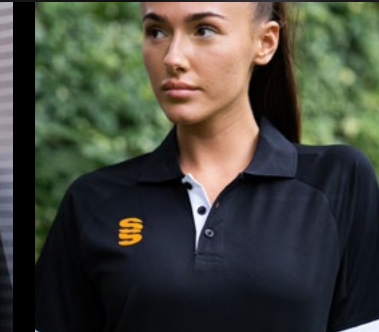


Sky Black Jade Gold

### Fuse Trim Colour Options



**Fuse Trim Designs:** Dual Dots Diagonal Stripe



Navy  
White  
White

Black  
White  
White

### Fuse Trim Colour Options



**Fuse Trim Designs:** Dots Diagonal Stripe

## Fuse T-Shirt DU365

ADD YOUR BRAND!  
INTERNAL SURRIDGE BRANDING  
ONLY.  
BACK NECK TAPES AND SIZE LABELS ARE  
SS BRANDED

- » Performance Polyester pique, crossover V-Neck
- » Forward position side seams with contrast insert
- » Contrast back yoke
- » French seam shoulder construction for comfort and durability
- » Forward side seams with contrasting coloured insert
- » Printed SS logo to chest
- » Fabric weight: 150gsm

### Unisex Sizes

SJ MJ LJ YTH  
S M L XL XXL XXXL

**NEW!**  
Fuse Stripe  
design also  
available



**FUSE**  
RANGE





Black

Navy

#### Fuse Trim Colour Options

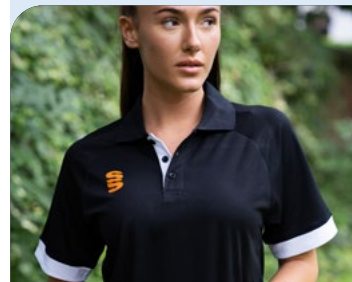


Fuse Trim  
Designs:

Dots



Diagonal Stripe



## Fuse Polo Shirt DU366

ADD YOUR BRAND!  
INTERNAL SURRIDGE BRANDING  
ONLY.  
BACK NECK TAPES AND SIZE LABELS ARE  
SS BRANDED

- » Performance Polyester pique, 3 button placket with 1x1 polyester rib collar
- » Forward position side seams with contrast insert
- » Contrast back yoke
- » French seam shoulder construction for comfort and durability
- » Forward side seams with contrasting coloured insert
- » Printed SS Logo to chest
- » Fabric weight: 150gsm

#### Unisex Sizes

SJ MJ LJ YTH  
S M L XL XXL XXXL

**NEW!**  
Fuse Stripe  
design also  
available



**FUSE**  
RANGE

ADD YOUR BRAND!  
INTERNAL SURRIDGE BRANDING  
ONLY.  
BACK NECK TAPES AND SIZE LABELS ARE  
SS BRANDED



Black

Navy

#### Fuse Trim Colour Options

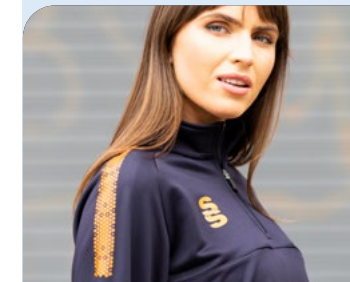


Fuse Trim  
Designs:

Dots



Diagonal Stripe



## Fuse 1/4 Zip Performance Top DU368

- » Made from heavy brushed french terry material to give warmth and comfort
- » 1/4 Zip neck detail for breathability
- » Dual print on both shoulders and reflective zip detailing
- » Personalise the Fuse range with SS logo colour to match the chosen Dual Print
- » Printed SS logo to chest
- » Fabric weight: 275gsm

#### Unisex Sizes

SJ MJ LJ YTH S M L XL  
XXL XXXL XXXXL XXXXXL

#### Also available in

XXSJ (3-4yrs) XSJ (5-6yrs)

**NEW!**  
Fuse Stripe  
design also  
available



**FUSE**  
RANGE



Maroon



## Active 1/4 Zip Maroon Performance Top WL001

- » Made from heavy brushed french terry material to give warmth and comfort
- » 1/4 Zip neck detail for breathability
- » Reflective zip detailing
- » Fabric weight: 275gsm

### Unisex Sizes

SJ MJ LJ YTH  
S M L XL XXL XXXL

### Also available in

XXSJ (3-4yrs) XSJ (5-6yrs)

Maroon  
Reverse



Bottle



### 17 SS Colour Options



WHITE LABEL

- Premium Quality •
- Great Price • Your Brand •

Available without SS branding and includes tear out label.



### Fuse Trim Colour Options



Fuse Trim  
Designs:



## Fuse Hoodie DU367

ADD YOUR BRAND!  
INTERNAL SURRIDGE BRANDING  
ONLY.  
BACK NECK TAPES AND SIZE LABELS ARE  
SS BRANDED

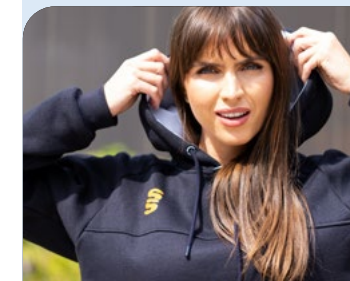
- » Polyester and Cotton fabric blend
- » French seam shoulder construction for comfort and durability
- » Branded eyelets with tube draw cord
- » Large front hoodie pocket
- » Forward side seams with contrasting insert
- » Personalise the Fuse range with SS logo colour to match the chosen Dual Print
- » Printed SS logo to chest
- » Fabric Weight: 300gsm.

### Unisex Sizes

SJ MJ LJ YTH  
S M L XL XXL XXXL

**NEW!**

Fuse Stripe  
design also  
available



**FUSE**  
RANGE



# BLADE

## TRAINING RANGE

A unique stock training range  
available in 12 different colourways



*Crafted by Surridge*



Contrast Back  
Yoke with SS

## Blade Training T-Shirt

### SUR365

- » Regular fit, performance polyester pique, crossover V-Neck
- » Forward position side seams with contrast insert
- » Contrast back yoke with embroidered SS logo
- » French seam shoulder construction for comfort and durability
- » Forward side seams with contrasting coloured insert.
- » Embroidered Surridge logo to chest
- » Fabric weight: 150gsm

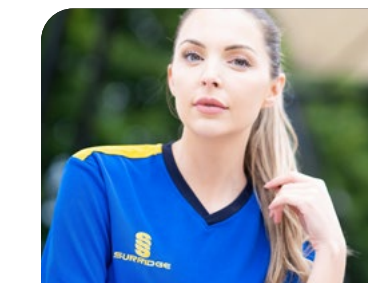
#### Unisex Sizes

SJ MJ LJ YTH  
S M L XL XXL XXXL

#### Colours

Shirt/Sleeve/Side Seam

	Black Amber White		Black Orange White		Black Purple White		Red Black White		Emerald Black White
	Royal Navy White		Royal Navy Amber		Emerald Navy White		Bottle Navy Amber		Sky Navy White
	Maroon Navy White		Red Navy White		White Navy				



**BLADE**  
TRAINING RANGE





Contrast Back Yoke with SS

## Blade Polo Shirt

SUR366

- » Performance Polyester pique
- » 3 button placket with 1x1 polyester rib collar
- » Forward position side seams with contrast insert
- » Contrast back yoke with embroidered SS logo
- » French seam shoulder construction for comfort and durability
- » Forward side seams with contrasting coloured insert
- » Embroidered Surridge logo to chest
- » Fabric weight: 150gsm

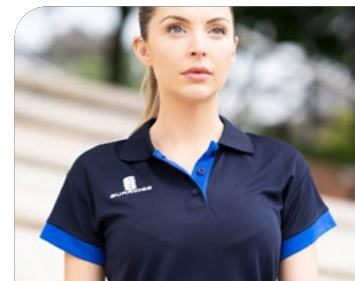
### Unisex Sizes

SJ MJ LJ YTH  
S M L XL XXL

### Colours

Shirt/Sleeve/Side Seam

	Black Amber White		Black Orange White		Black Red White		Black Purple White		Black Emerald White
	Navy Bottle Amber		Navy Royal Amber		Navy Royal White		Navy Sky White		Navy Maroon White
	Navy Red White		Navy Emerald White						



**BLADE**  
TRAINING RANGE



## Blade Hoody

SUR367

- » Polyester and Cotton fabric blend
- » Contrasting inner hood lining and chest panel
- » French seam shoulder construction for comfort and durability
- » Branded eyelets with tube draw cord
- » Large front hoodie pocket
- » Forward side seams with contrasting insert
- » Embroidered Surridge logo to chest
- » Fabric weight: 300gsm

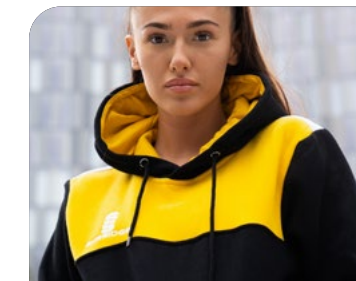
### Unisex Sizes

SJ MJ LJ YTH  
S M L XL XXL

### Colours

Hoody/Chest/Side Seam

	Black Amber White		Black Orange White		Black Red White		Black Purple White		Black Emerald White
	Navy Bottle Amber		Navy Royal Amber		Navy Royal White		Navy Sky White		Navy Maroon White
	Navy Red White		Navy Emerald White						



**BLADE**  
TRAINING RANGE





## Blade Performance Top SUR368

- » Performance Polyester French Terry material
- » Contrast chest panel and contrast back panel
- » Half Zip with SS performance locking rubber zip toggle
- » French seam shoulder construction for comfort and durability
- » Forward side seams with contrasting colour insert
- » Embroidered Surridge logo to chest
- » Fabric Weight: 250gsm

### Unisex Sizes

SJ MJ LJ YTH  
S M L XL XXL

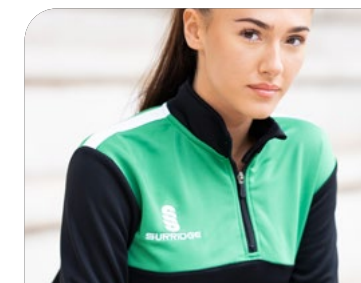


Contrast Back Yoke with SS

### Colours

Top/Chest/Side Seam

	Black Amber White		Black Orange White		Black Red White		Black Purple White		Black Emerald White
	Navy Bottle Amber		Navy Royal Amber		Navy Royal White		Navy Sky White		Navy Maroon White
	Navy Red White		Navy Emerald White						



**BLADE**  
TRAINING RANGE

**SS**  
EST. 1867

Create your own 3D effect, bespoke

# BADGES & APPLIQUÉS

Limitless possibilities for garment customisation. Silicone and TPU are just 2 of the options available.

YOUR KIT - YOUR COLOURS - YOUR WAY - YOUR BRAND



Minimum orders of 100 apply. 3-4 Week delivery.

*Crafted by Surridge*

SURRIDGESPORT.COM  
www.surridgesport.com/en/badges-applique





# Dual Active Short DU029

WHITE LABEL

• Premium Quality •

• Great Price • Your Brand •

- » Soft feel performance stretchy microfibre material
- » Half leg with poly/lycra inner
- » Now with longer inner pant to be lower than the short

**Unisex Sizes**  
XXS-UK 4, XS-UK 6, S-UK 8,  
M-UK 10, L-UK 12, XL-UK 14, XXL-UK 16



# Dual Short DU020

WHITE LABEL

• Premium Quality •

• Great Price • Your Brand •

- » Poly peached Micro-fibre blend with modern shorter leg length, more suited to gym and physical exercise
- » Elasticated hem with drawcord for flexibility and comfort

**Unisex Sizes**  
SJ MJ LJ YTH  
S M L XL XXL XXXL



# Pocket Training Ripstop Shorts SUR331

- » Polyester Ripstop wind resistant fabric with 2 pockets
- » Embroidered Surridge logo to thigh
- » Fabric Weight: 115gsm

**Unisex Sizes**  
SJ MJ LJ YTH  
S M L XL XXL

**Ladies Sizes**  
8 10 12 14 16 18



# Blade Training Shorts SUR370

- » 100% Polyester
- » 2 Pockets
- » Embroidered Surridge logo to thigh
- » Fabric Weight: 160gsm

**Unisex Sizes**  
SJ MJ LJ YTH  
S M L XL XXL





# Fuse Shorts

SUR457

- » Performance Polyester
- » Matches to the Polo and T-Shirt in the same range
- » No pockets
- » Elasticated hem for comfort

Unisex Sizes

SJ MJ LJ YTH  
S M L XL XXL XXXL

Also available in

XXSJ (3-4yrs) XSJ (5-6yrs)



# Blade Skort

SUR380

- » 100% Performance Pique Skort, made with high quality polyester with an elastane inner lining
- » Embroidered Surridge SS logo to the left hem

Ladies Sizes

4 6 8 10 12 14 16 18

**Bespoke Badge Option:**  
Add your Club Badge in full colour. Sponsor logos can also be added to the back left and right of the skort.



Dual Trim Colour Options



Dual Trim Designs:



# Poplin Pant

SUR381

WHITE LABEL  
• Premium Quality •  
• Great Price • Your Brand •

- » Soft microfibre poplin outer
- » Straight leg traditional kit
- » Extra large ¾ side leg zip coming up to just below the pocket
- » Embroidered Surridge logo to left thigh
- » Soft cotton inner lining
- » Lycra gusset for flexibility
- » 2 zipped pockets
- » Mens and Ladies fits

Unisex Sizes

SJ MJ LJ YTH  
S M L XL XXL XXXL

Ladies Sizes

8 10 12 14 16 18

Available without Surridge branding, code: **DU385**



# Blade Slim Tek Pants

SUR378

- » French Terry material with polyester lycra insert at calf
- » Two invisible zip pockets for security
- » Embroidered Surridge logo to thigh

Unisex Sizes

SJ MJ LJ YTH  
S M L XL XXL





# Ripstop Track Pant

SUR375

- » Matte texture Ripstop-Polyester blend with mesh upper lining and Nylon Tafeta lower lining
- » Lycra gusset for flexibility and comfort with a drawcord
- » More modern slimmer leg fit from knee downwards
- » 12" side seam lower zip at hem

Available in  
Mens and Ladies Fits

Unisex Sizes

SJ MJ LJ YTH M L XL XXL

Ladies Sizes

8 10 12 14 16 18



# Performance Legging

DU028

- » 85% Polyester - 15% Elastane
- » 2 Side pockets for mobile and two smaller pockets (one with zip) for personal belongings
- » Printed Surridge logo to thigh
- » Available with and without SS logo
- » Dual print can be added for extra colour to calf

Ladies Sizes

7-8 9-10 11-12

8 10 12 14 16 18



Dual Trim Colour Options



Dual Trim  
Designs:



WHITE LABEL  
• Premium Quality •  
• Great Price • Your Brand •

Available without SS branding

# Dual Slim Tek Pants

DU019

- » Interlock Polyester material with Polyester Lycra insert at calf
- » Two invisible zip pockets for security
- » Choice of SS and Dual Print colours to suit your branding

Unisex Sizes

SJ MJ LJ YTH

S M L XL XXL XXXL

Also available in

XXSJ (3-4yrs) XSJ (5-6yrs)

WHITE LABEL  
• Premium Quality •  
• Great Price • Your Brand •

Available without SS branding

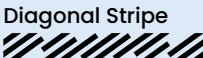


NEW!  
Dual Stripe  
design also  
available

Dual Trim Colour Options



Dual Trim  
Designs:



Navy







Black

Navy

17 SS Colour Options



## NEW! Dual Elite ¼ Zip Training Jacket DU381



- » Modern overhead rain jacket with hood
- » Hoody and body is lined in the same material which has a light brush for a little warmth
- » The arms are well fitted for a modern look
- » Both front pockets are over sized with the same brushed lining for extra warmth
- » The material is matt and waterproof

### Unisex Sizes

SJ MJ LJ YTH  
S M L XL XXL XXXL



Available without SS branding and includes tear out label.



Navy

17 SS Colour Options



## Dual Training Jacket DU002



- » Wax Coated outer shell, light and fully waterproof
- » Reflective, water resistant zip detail and 2 zip pockets
- » Mesh lined hood with adjustable toggles
- » Underarm vents to stay breathable but warm

### Unisex Sizes

SJ MJ LJ YTH  
S M L XL XXL XXXL  
XXXXL XXXXXL

WHITE LABEL

• Premium Quality •  
• Great Price • Your Brand •

Available without SS branding



Red

Royal

Black







Black



## Dual Rain Jacket

DU003



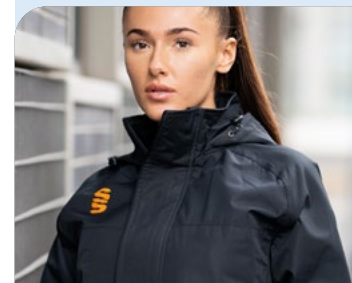
- » Thick Wax Coated outer shell, rain-proof and soft fleece lined
- » Two zip pockets and placket zip cover on body and pockets
- » Taped seams so fully waterproof

### Unisex Sizes

SJ MJ LJ YTH  
S M L XL XXL XXXL  
XXXXL XXXXXL



Navy



WHITE LABEL

- Premium Quality •
- Great Price • Your Brand •

Available without SS branding



Navy



## NEW! Dual Puffer Jacket

DU181



- » A cosy, highly fashionable, fitted and soft to touch down feel jacket with hand filled poly wadding for superior warmth
- » StormDri water repellent rip stop micro peach outer
- » The perfect lightweight jacket for cold and damp winter days

### Ladies Sizes

XS S M L XL XXL



Ladies Back View  
Navy



ADD YOUR BRAND!  
INTERNAL SURRIDGE BRANDING  
ONLY.  
BACK NECK TAPES AND SIZE LABELS ARE  
SS BRANDED







NEW! Fleece Robe  
WL002



- » Waterproof and windproof outer shell fabric made from 100% polyester
- » Super-warm synthetic lambswool lining made from 100% polyester
- » Tailored, fitted sleeves with hook and loop fasteners at the wrist
- » Full length 2-way reversible zip
- » Minimal sealed seam construction
- » Deep, lined external zip pockets
- » 'A5' size internal, soft-lined pocket
- » Internal waterproof zip entry pocket - ideal for phone/wallet
- » 2 inner zips for print and embroidery access
- » Zip to reverse for print and embroidery access

*Designed to let you get changed anywhere, whilst protecting you from the elements, Fleece Robe is an essential piece of kit for all outdoor activities. The long sleeve design provides extra warmth and is ideal for those waiting to compete or watching sporting events. The jacket can be used multiple times throughout the day, over wet kit, without the need for drying between uses.*

*Fleece Robe is one tough bit of kit. It's been designed and tested to stand the wear and tear of an active lifestyle, cold conditions and any challenge you face.*

Unisex Sizes

XS/S M/L XL/XXL

17 SS Colour Options



WHITE LABEL

- Premium Quality •
- Great Price • Your Brand •

Available without SS branding and includes tear out label.





**NEW! Active Padded Jacket** WL003



- » 100% Polyester showerproof material
- » Wind resistant with padded lining
- » 2 side zipped pockets
- » Sleeves have inner elasticated cuffs
- » Inner zip pocket
- » 2 inner zips for print and embroidery access
- » Zip to reverse for print and embroidery access

**Unisex Sizes**

SJ S M L XL XXL XXXL XXXXL XXXXXL

Black Reverse



Navy Reverse



**17 SS Colour Options**



Black



Navy

Tear out label

WHITE LABEL

- Premium Quality •
- Great Price • Your Brand •

Available without SS branding and includes tear out label.

WHITE LABEL

- Premium Quality •
- Great Price • Your Brand •

Available without SS branding and includes tear out label.



Navy

**17 SS Colour Options**



Black



**NEW! Active Gilet** WL004



- » Showerproof, breathable and windproof
- » Soft elasticised armhole and hem
- » Contrast underarm panelling made from heavy brushed french terry material
- » Full front zip with chin guard
- » Two zip-closing pockets
- » Comfortable longer length
- » 2 inner zips for print and embroidery access

**Unisex Sizes**

YTH S M L XL XXL XXXL XXXXL XXXXXL



Navy Reverse



Black Reverse



SS  
EST. 1867



**NEW! Active Long  
Padded Jacket WL005**



- » 100% Polyester showerproof material
- » Wind resistant with padded lining
- » 2 side zipped chest pockets
- » 2 inner zips for print and embroidery access
- » Zip to reverse for print and embroidery access
- » Double ended front zip allows for comfort while seated

**Unisex Sizes**  
YTH S M L XL XXL XXXL XXXXL XXXXXL



Black  
Reverse



Navy  
Reverse



Black

Navy

**WHITE LABEL**  
• Premium Quality •  
• Great Price • Your Brand •

Available without SS branding and includes tear out label.

**Supersoft  
Padded Jacket R233**



- » Showerproof and Windproof
- » Hinged locker patch in neck for self-branding, soft bound cuff and hem, contrast lining and trim
- » Reflective hip detail with integral hood, full front zip
- » Zip pockets and hangtag
- » Solid colours ideal for schoolwear, easy to pack, super soft, lightweight and warm

**Mens Sizes**

S M L XL XXL XXXL

**Ladies Sizes**

XS S M L XL XXL

**Ages**

2/3 3/4 5/6 7/8  
9/10 11/12 13/14



Black



Navy





# Holkham Down Feel Jacket R181



- » A cosy, highly fashionable, fitted and soft to touch down feel jacket with hand filled poly wadding for superior warmth
- » StormDri water repellent rip stop micro peach outer
- » The perfect lightweight jacket for cold and damp winter days

### Mens Sizes

S M L XL XXL XXXL

### Ladies Sizes

XS S M L XL XXL

Black



Navy



17 SS Colour Options



# Core Nova Lux Padded Gilet R223



- » Great cold weather protection
- » Super warmth without any weight
- » The Nova Lux padded bodywarmer offers comfort and style, the perfect layering gilet

### Unisex Sizes

XS S M L

XL XXL XXXL

Black



Navy



17 SS Colour Options



Mens Fit  
Black



Ladies Fit  
Navy



17 SS Colour Options



# Ice Bird Padded Gilet R193



- » The gilet version of the modern classic design
- » This super lightweight and perfectly tailored contemporary gilet offers amazing warmth without weight from it's super air-soft handle and hand filled polyester wadding

### Mens Sizes

S M L XL XXL

### Ladies Sizes

XS S M L XL XXL



Orange



Frost Grey



Royal



SS  
EST. 1867



# Dual Long Sleeve Baselayer DU034

- » Baselayers are tight fitting garments which help stabilize muscles to help improve performance
- » SS logo available in 17 SS colours

Unisex Sizes  
SJ MJ LJ YTH S M L XL XXL



# Dual Baselayer Legging DU040

- » Baselayers are tight fitting garments which help stabilize muscles to help improve performance
- » SS logo available in 17 SS colours

Unisex Sizes  
SJ MJ LJ YTH  
S M L XL XXL

WHITE LABEL

- Premium Quality •
- Great Price • Your Brand •

Applies to all items on this page.

Navy  
Available without SS branding



# Dual Baselayer Short DU035

- » Baselayers are tight fitting garments which help stabilize muscles to help improve performance
- » SS logo available in 17 SS colours

Unisex Sizes  
SJ MJ LJ YTH  
S M L XL XXL

Navy  
Available without SS branding



# Surridge Quarter Sock SUR480

- » A modern quarter sock made with Acrylic, a cotton sole for extra comfort
- » Printed gripper on the sole for extra grip
- » A perfect pair of socks for playing football, rugby or gym wear
- » Minimum order of 300pcs

Unisex Sizes  
3-6 7-11



Royal



Red



Emerald

**Bespoke Badge Option:**  
You can replace the SS logo with your own School Crest for a more bespoke look. Grippers will also match to School Crest.

White



Maroon



Black



Navy



# Baseball Cap

SUR421

- » Classic fitted cap with comfortable five panel design
- » Eyelet mesh back panels for improved air flow & ventilation
- » Interior woven tape reinforcement for strength & durability
- » Adjustable tab at the back with hook & loop closure for custom fitting
- » Embroidered SS logo in white to left side of cap

**Size**  
One Size



**Colours**  
Classic Baseball Cap

Bottle

Maroon

Navy

Royal

Emerald

Black

NEW!

# Fuse Flexi Cap

SUR470

- » The Fuse Flexi cap is a modern shaped cap, lighter, sleeker, smarter and more comfortable
- » Its 6 panels are well finished, combining a lightweight visor fabrication and new three-layer multifunction sweatband
- » Inner sweatband and elastic fitting gives the most comfortable fit there is

**Unisex Sizes**  
S/M L/XL



**Colours**  
Fuse Flexi Cap

Navy

Maroon

Black

NEW!

# Dual Bucket Hat

DU507

- » 100% Polyester Drill Material
- » Any design is possible (we can match to any design)
- » Stock range also available (details on request)
- » Minimum order of 50pcs

**Unisex Sizes**  
S/M L/XL

**Bespoke Badge Option:**  
Add your Club Badge in full colour

**WHITE LABEL**  
• Premium Quality •  
• Great Price • Your Brand •

Available without branding



**Stock Colours**  
Royal, Red, Navy or Black

Royal

Red

Navy

Black

This item is fully bespoke, for details visit:  
[www.surridgesport.com/en/kitbuilder](http://www.surridgesport.com/en/kitbuilder) or scan the QR code above.

# Dual Hijab

DU030

- » Lightweight performance polyester material
- » Highly breathable and very cool to wear
- » SS print on right hand side

**Bespoke Badge Option:**  
Add your Club Badge in full colour

**Ladies Sizes**  
XS/S M/L



**17 SS Colour Options**

1

2

3

4

5

6

7

8

9

10

11

12

13

14

15

16

17



# Snowstar Beanie BC450

- » 100% Soft-touch acrylic
- » Dual style – cuffed or slouch
- » Two-tone pom pom
- » Double-layer knit
- » Ribbed cuff
- » Hand wash only

Size

One Size

**Bespoke Option:**  
Scan the QR code below  
or visit [www.surridgesport.com/kitbuilder](http://www.surridgesport.com/kitbuilder)





NEW!

# Bobble Hat



- » 100% Acrylic
- » Logo can be woven in, embroidered or a woven badge can be applique
- » Prices vary on qty and logo application
- » Min 50 for simple designs

Sizes

One Size



**FULLY BESPOKE**  
Create your own unique Bobble Hat

Available with or without Bobble



Scan the QR code above or visit:  
[www.surridgesport.com/en/kit-builder#/products/beanie](http://www.surridgesport.com/en/kit-builder#/products/beanie)

NEW!

# Scrunchies

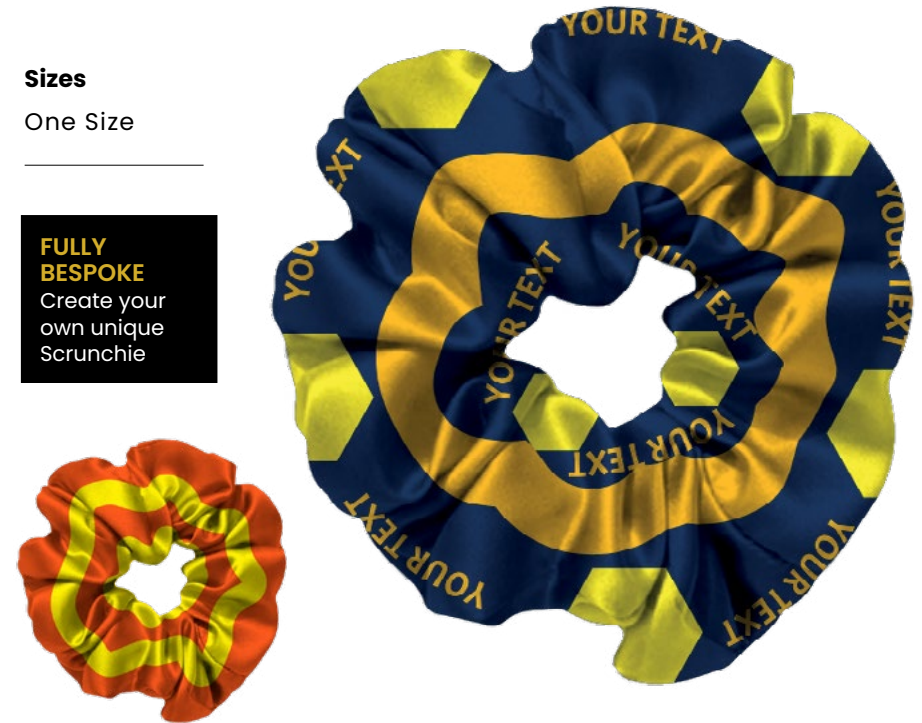


- » Min Order of 100pcs.
- » 4-6 Weeks Production One Size
- » 100 @ £4.00 each (prices are ex vat and carriage)

Sizes

One Size

**FULLY BESPOKE**  
Create your own unique Scrunchie



Scan the QR code above or visit:  
[www.surridgesport.com/en/kitbuilder#/products/scrunchies](http://www.surridgesport.com/en/kitbuilder#/products/scrunchies)



NEW &  
IMPROVED!

# Dual Backpack

DU004

- » Over shoulder quality backpack made of polyester material
- » Boot compartment and mesh panel drink compartment
- » Reinforced shoulder straps plus chest strap
- » Cushioned straps and handles
- » Internal laptop compartment

Size: 50cm x 38cm

WHITE LABEL

- Premium Quality •
- Great Price • Your Brand •



17 SS Colour Options



# Small Holdall

SUR364

- » Stylish Holdall with plenty of space and includes wet compartment
- » 100% modern nylon with 2 end pockets

Size  
64cm x 27cm x 30cm



# Mesh Bib

SURF012

- » 100% Polyester Mesh Bib with elasticated binding.
- » Screen Printed Surridge Logo to front & back.



# Knitted Gloves

R147X

- » 100% Acrylic. Fully-lined **Thinsulate™** gloves.
- » Classic knitted style for winter warmth.

Size  
S/M L/XL 2XL



Bespoke Badge  
Option:

Add your Club  
Badge in full  
colour. Sponsor  
logos can also  
be added.



## NEW Water Bottle with Straw (600ml) DU045

Black/White or Blue/White

Water Bottle with time markings, Motivational Drink Bottles Leakproof and BPA-free (Blue).

**Motivational Quote & Time Marker:** Our bottles are featured with a frosted and translucent appearance helps you measure your daily water intake. This sport bottle with unique inspirational quotes and time markings will always remind you to take in the right amount of water to keep you hydrated throughout the day. Perfect for the gym, yoga, runners, travel, hiking, cycling, camping, school and office use.

**BPA Free & Premium Material:** This 600ml sports water bottle is great for both kids and adults, which is BPA-free, made of food-grade and safe Tritan material. Thickened water bottles body and anti slip canteen surface purpose to protect the bottle from falling and breakage.

**100% Leakproof:** The water bottle is equipped with a durable wrist strap and a Leak-proof seal inside the lid. It is 100% leakproof, durable and impact-resistant, making it easy to carry around and convenient for on-the-go hydration. And a safety lock prevents accidents from opening the lid.

**One Hand Opened:** Simply open with one hand by clicking the button on the lid, which is more convenient and quicker. The soft durable silicone nozzle make you enjoy spill-proof sipping. The 600ML capacity of the water bottle is easy to carry and lightweight.

**Easy Cleaning:** For best results we recommend hand wash, but it also can be dishwasher safe. Comes with 1 pcs bottle brush and straw brush to make cleaning easy and quick. A wide mouth makes cleaning and filling fruits & ice cubes easier.



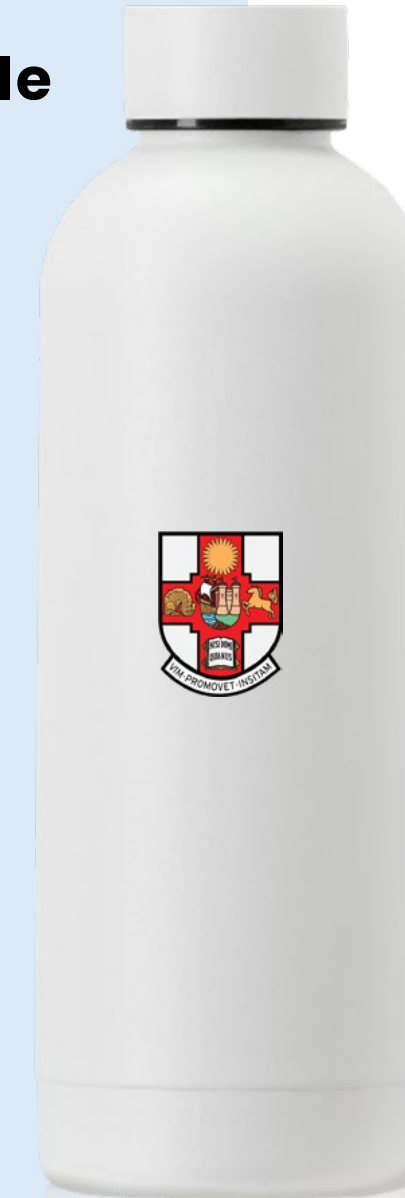
## NEW! Vacuum Stainless Steel Bottle (500ml) DU046

- » Vacuum insulated stainless steel bottle with an iconic design
- » The insulated 18/8 stainless steel keeps drinks hot or cold for several hours
- » Tested and approved under Food Safe Legislation (LFGB), and tested for phthalates content according to REACH regulations
- » Featuring a base that fits in most cup holders
- » Volume capacity is 500ml
- » Presented in a recycled cardboard gift box
- » Drinking bottle in RPET with rubberised finish (frosted transparent) and stainless steel cap with inner RPET lid and silicone ring
- » BPA free. Leak-free

**Bespoke Badge Option:**  
Add your Club Badge  
in full colour.

**SS**  
EST. 1867

White



Black



Iconic  
Design Double  
Wall Stainless  
Steel Bottle



# Create Your Own Club Webshop



## Completely Free

No additional charges for setting up your own club webshop.



## Easy Personalisation

Add optional extras such as print, embroidery, initials, names and numbers.



## Hassle Free

No need to collate team orders as everyone can order individually.



## Quick Lead Times

Stock items have a fast turnaround within 10 working days from order placement.

COMPLETELY  
**FREE**

Create your own webshop as a Trader and put them on your website.

**FOR FREE!**

## NEW TRADE PORTAL 2025

Improved styling, lots more facilities and functionality



EST. 1867

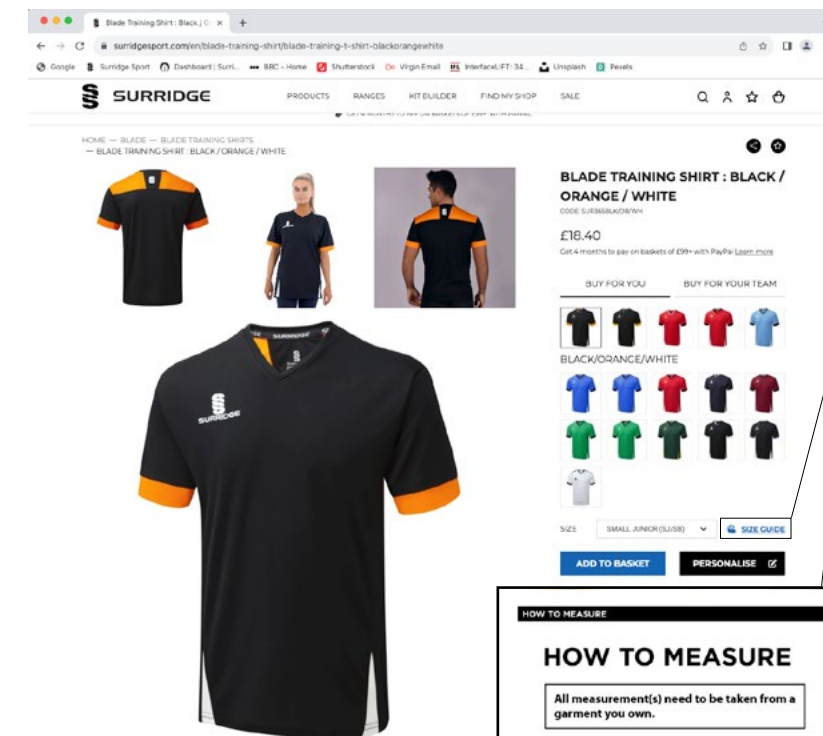
SURRIDGESPORT.COM

*Crafted by Surridge*

# SIZE GUIDES

All products requiring a size guide have their own individual guide and information on How To Measure on the chosen product web page (See example below)

1). Simply visit [www.surridgesport.com](http://www.surridgesport.com) or scan the QR Code bottom left



2). Select the chosen product, ie: Blade Training Shirt plus colour

3). Click on:

[SIZE GUIDE](#)

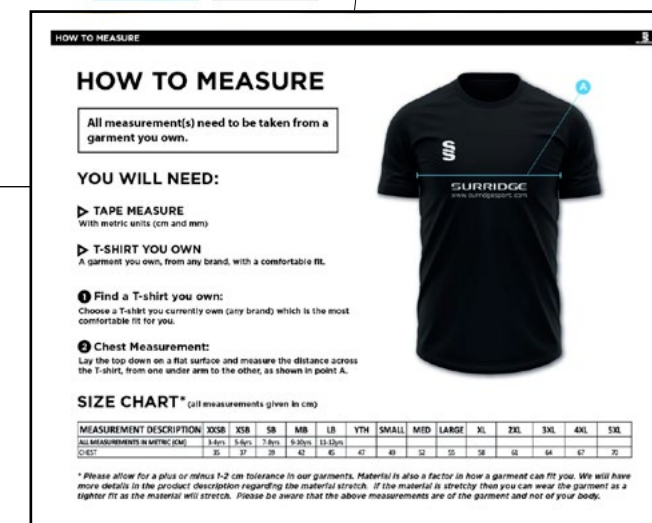
Which will then take you to the product size guide window shown below



Scan me from your device



EST. 1867



# WASHING INSTRUCTIONS

Surridge Sport garments are manufactured from top quality fabrics. All fabrics & logos undergo stringent quality tests to ensure durability and wash-ability. They will last for many years if properly cared for. When washing garments always refer to the instructions on the garment label.

## Playing Kits

First wash – Always wash shirts, shorts and socks inside out & separately to remove surface dye.

Avoid leaving kits folded or bundled together for any length of time whilst damp or soiled. Remove excess mud and wash as soon as possible after use to avoid stains from setting.

Garments may discolour due to staining by substances such as mud, grass, petroleum jelly etc, which may not entirely be removed by washing alone. Treat stains directly with a stain remover as soon as possible.

Take care not to use stain remover on transfers applied to the garment as this may effect the quality of the print. Some of the toughest stains may require more than one treatment.

- Do not over load the washing machine and always wash light and dark colours separately.
- Do not wash above the temperature stated on the garment label. (many items 30°C)
- Do not use fabric softener.
- If the garment can be tumble dried (see care label) always tumble dry cool.
- Never iron printed motifs

## Training Wear / Outer Wear

Dirt on outer wear (padded jacket, rain jacket, training jacket) should be wiped off with a damp cloth. These garments do not require regular washing as this will remove the shower proofing. If necessary wash inside out, no hotter than 30 degrees on a synthetic wash.

- Do not use fabric softener.
- Do not tumble dry.
- Never iron printed motifs.

Surridge Sport does not accept liability for discolouration or damage to garments due to incorrect laundering.



+44 (0) 1282 418 418



sales@surridgesport.com



SDL Group Ltd, Britannia Centre,  
Network 65 Business Park, Burnley, Lancashire, BB11 5ST



EST. 1867

*Crafted by Surridge*

S U R R I D G E S P O R T . C O M

All information within this catalogue was correct at the time of production and is subject to change without prior notice.

